

انجمن صنفی شرکتهای حمل و نقل بین المللی ایران

ITCA of IRAN

Int'l. Transport Companies Association of IRAN

تاسیس ۱۳۴۸ • ۱۹۶۹ Since



Encl.: **دارد** No.: ۱۸۰/۱/۱۱۱۴۹ شماره: ۱۳۹۹/۲/۲۲ تاریخ:

بسمه تعالی

«نمابر فوری»

بخشنامه

شرکت محترم حمل و نقل بین المللی (عضو و غیرعضو)

موضوع: آخرین وضعیت محدودیتهای حمل و نقل بین المللی جادهای متأثر از ویروس کرونا تا مورخ جمعه ۹۹/۲/۱۹ با تقدیم درود و احترام،

پیرو بخشنامه شماره ۱۸۰/۱/۱۱۰۴۷ مورخ ۹۹/۲/۱۴ به استحضار می رساند؛ مدیریت کل گرامی دفتر ترانزیت و حمل و نقل بین المللی آخرین وضعیت محدودیتهای حمل و نقل بین المللی جادهای متأثر از ویروس کرونا تا آخر وقت جمعه مورخ ۹۹/۲/۱۹ (برابر با ۸ می ۲۰۲۰) به همراه پیوند (لینک) به روز رسانی ذیربط، واصله از اتحادیه بین المللی حمل و نقل جادهای (ایرو) منضم به گزارش آخرین وضعیت تصمیمات کشورها در حوزه تردد اتباع (ناوگان)، خارجی، واصله از معاونت محترم امور مجلس و ایرانیان وزارت امور خارجه، جهت اطلاع رسانی توأماً مراتب عنوان کلیه شرکتهای عضو یا مخاطب، به این انجمن ارسال نموده است که در سامانه انجمن بارگذاری شده است.

توضیحاً هر گونه تغییر در وضعیت مرزهای جمهوری اسلامی ایران نیز، مستمراً به وزارت امور خارجه و نیز اتحادیه ایرو، جهت لحاظ در به روز رسانی روزانه، منعکس می گردد، لذا شایسته است هر گونه مراتب مغایرت ملاحظه یا گزارش شده نسبت به اطلاعات مندرج در سامانه انجمن، در اسرع وقت جهت اقدامات آتی به دفتر مذکور اعلام گردد. /ر |

با تقدیم احترام

میرفتحعلی زنوزی

دبیر

www.itair.ir

ita_db@itair.ir

تهران / ۴۳۱۱۱ ۱۵۷۵۶ ، میدان هفتم تیر، دکترمفتح شمالی، خیابان ملایری پور، شماره ۹۶، تلفن: ۸۸۲ ۲۹۰۴ - ۶ / ۴۶۹۲ ۸۸۳۱ (۰۲۱) شماره: ۸۸۲ ۲۶۸۳

No. 96, Malayeripour St., North Dr. Mofateh Ave., Tehran 15756 43111, IRAN Tel.: (+98 21) 8831 4692 / 6 - 8882 2904 Fax: 8882 2683

Global Covid19.txt - ضمیمه کروناویروس

متعاقب بحران کرونا IRU جدول آخرین وضعیت محدودیت‌های کشورها در
<https://www.iru.org/coronavirus-covid-19-information>

آخرین اطلاعات از هر کشور

https://www.iru.org/global-search?text=coronavirus&type_id%5B0%5D=flash&type_id%5B1%5D=news&order_by=date

[www.iru.org \(https://www.iru.org/coronavirus-covid-19-information\)](https://www.iru.org/coronavirus-covid-19-information)
Coronavirus (COVID-19) information
Coronavirus information page

آخرین اخبار واصله از تصمیمات کشورهای خارجی در دوره کرونا تاریخ پروژسائی: ۱۳۹۹/۰۲/۱۷

ملاحظات	محدودیت های ترددی	محدودیت های روادیدی	نام کشور	ردیف
یادداشت ۲۰۲۰/۹	محدودیت برای سفرهای غیر ضروری برای کشورهای غیر عضو اتحادیه تا تاریخ ۲۶ اردیبهشت ۱۳۹۹	کلیه افرادی که دارای ویزای شنگن بوده اند تا تاریخ ۳۰ ژوئن ۲۰۲۰ از ضرورت داشتن اقامت معاف هستند.	آلمان	۱
	از ۱۶ مارس کلیه حمل و نقل های زمینی متوقف گردیده است	از اول لغایت ۲۰ آوریل پرواز داخلی و خارج تعلیق است.	ازبکستان	۲
در زمینه حمل و نقل برای کالاهای بشردوستانه و پروژه های استراتژیک با موافقت مقدماتی ستاد مبارزه با کرونا و با همراهی گمرک و نظارت قرنطینه تا مقصد صورت خواهد گرفت	توقف تردد زمینی به جز حمل بار و مواد غذایی با شرایط خاص و کنترل(تردد رانندگان خارجی از کشورهای آلوده از جمله ایران ممنوع است. محدودیت تردد اتباع خارجی در تمامی مبادی ورودی	از ۹/۱۲/۲۱ صدور روادید جهت گذرنامه های سیاسی ، خدمت و عادی اتباع ایرانی متوقف گردیده است.	تاجیکستان	۳

اداره گذرنامه و روادید

یادداشت شماره ۱۷	در صورت ورود اتباع ایرانی ۱۴ روز قرنطینه شخصی و در صورت ابتلا در موارد حاد و اورژانس توسط مراکز بهداشتی دولتی یا خصوصی پذیرش خواهند شد.	صدور روادید به جز موارد خاص تا اطلاع ثانوی امکان پذیر نیست.	تونس	۴
رانندگان ایرانی زمان ورود باید ۱۴ روز قرنطینه بمانند و بار آنها نیز تا ۷۵ ساعت تحت قرنطینه است.	محدودیت تردد اتباع ایرانی	تنها ورود دیپلمات های مقیم مجاز است و باید قبل از ورود طی یادداشتی اطلاع رسانی شود مشروط به قرنطینه خانگی	قرقیزستان	۵
نامه شماره ۳۹۴۹۰۷ مورخ ۱۳۹۹/۱/۱۰	نماینده جلال آباد اعلام نموده از تاریخ ۹۸/۱۳/۲۷ کلیه پروازهای ایرانی به افغانستان ممنوع می باشد. مرزهای زمینی به صورت محدود برای تردد دیپلمات ها و ورود اتباع آن کشور باز می باشد.	منع تردد زمینی و هوایی	افغانستان	۶
			زیمبابوه	۷
			موریتانی	۸

اداره گذرنامه و روادید

همه مسافرین ورودی پس از بازگشایی، پروازها غربالگری و تست می شوند حتی خدمه پرواز	مرزهای زمینی تا ۳۰ آوریل بسته است مرزهای زمینی با ج.ا. بسته است	منع ورود اتباع خارجی بجز موارد خاص با گواهی سلامت و قرنطینه ۷ تا ۱۴ روز	پاکستان	۹
	کوئته : کلیه مرزهای زمینی و هوایی با ایران و همسایگان از ۵ اسفند بسته اعلام شده است. کلیه پروازهای داخلی تعطیل است.	مکاتبه با واخ محل ورود مامورین جدید و حتی بازگشت از مرخصی با رعایت ۴۸ ساعت قرنطینه اجباری در اقامتگاه شخصی و یا هتل با هزینه خود شخص کوئته : برای تردد دیپلماتها نیاز به مکاتبه و توقف ۶ هفته ای		
	تردد مقیمین و دیپلمات های مقیم آزاد می باشد . ورود اتباع ایرانی از ۹۸/۱۲/۱۵ ممنوع بوده . ایجاد محدودیت پروازی از ۹۹/۰۱/۰۱ همچنین بستن مرز دریایی از ۹۹/۰۱/۰۱	تا پایان ماه می تعطیل می باشند.	نیوزلند	۱۰
	از تاریخ ۹۹/۰۱/۲۲ محدودیت پرواز ایران ایر به امستردام برداشته شد. مرز هوایی فقط برای اتباع حوزه اتحادیه اروپا ،انگلیس، دارندگان کارت اقامت و دیپلماتها باز است.	تا اطلاع ثانوی تعطیل می باشند. روادید عادی تا پایان ماه می صادر نخواهد شد. صدور روادید برای دیپلمات جدید با هماهنگی با واخ محل	هند	۱۱
	۱۴ روز قرنطینه اجباری	اتباع ایرانی، ایتالیایی، آمریکا و انگلیس تا ۱۵ اردیبهشت محدودیت روادید و تردد	اوگاندا	۱۲

اداره گذرنامه و روادید

			برای همه اتباع خارجی بسته است	بلیزیک	۱۳
پروازهای ترکیه از برزیل به ایران لغو است و ایرانیان از طریق دوحه سفر کنند.	منع تردد تا ۵ خردادماه برای کلیه اتباع خارجی به استثناء دیپلماتها و افرادی که دارای اقامت دائم برزیل باشند. همسر یا فرزند یا والدین برزیلی داشته باشند.		ویزای ترددی به شرط عدم ورود به کشور امکان پذیر است. صرفا دیپلماتها اجازه ورود دارند.	برزیل	۱۴
ورود اتباع ترک با ۱۴ روز قرنطینه خودروهای شخصی و باربری در ورود به ترکیه ۱۴ روز قرنطینه حتی برای اتباع ترک	کلیه مرزها بسته است. به استثنای افرادی که کارت اقامت دائم آن کشور را دارند و همسران ایرانی اتباع ترک. برای خروج محدودیتی نیست فقط با ارسال یادداشت و مجوز از استانداری		دیپلمات ها بصورت موردی و با ارائه یادداشت به واخ ترکیه می توانند وارد شوند و با ۱۴ روز قرنطینه در محل. ورود اتباع غیر ترک ممنوع است حتی اتباع خارجی دارای کارت اقامت	ترکیه	۱۵
	در موارد استثناء با لحاظ تست کرونا و قرنطینه		ممنوعیت ورود کلیه اتباع خارجی از جمله ایران	پرتغال	۱۶
	کلیه مرزها به جز برای تحویل کالا و خدمات بسته است.			بلغارستان	۱۷

اداره گذرنامه و رواید

ورود با ۱۴ روز قرنطینه خانگی	محدودیت تردد اعلام شده برای کلیه اتباع خارجی	ممنوعیت ورود برای کلیه اتباع خارجی از جمله ایرانی از تمامی مرزهای اتباع اتحادیه اروپا، کانریشکی و درمانی با مجوز حرقه ای، اعضای هیات های دولتی و دیپلماتیک و نظامی، رانندگان کامیون های حمل کالا تنها دیپلمات های خارجی که محل ماموریتشان یونان تعیین گردیده است می توانند خارج از مقررات منع رفت و آمد به این کشور سفر کنند. ورود سایر دیپلماتها ممنوع است.	یونان	۱۸
	تمام مرزهای زمینی با همسایگان بسته به جز تردد کامیون و کالا	بسته شدن مرزها برای اتباع غیرنروژی (بجز دیپلماتها)	نروژ	۱۹
	محدودیت تردد اتباع خارجی در مرزهای دولتی	تعلیق لغو رواید یکطرفه آن کشور با ۵۷ کشور بجز دارندگان گذرنامه های سیاسی، ملی و خدمت ارائه گواهی سلامت صادره زیر ۴۸ ساعت معتبر است.	قزاقستان	۲۰
	تردد با اعلام قبلی و مجوز برای دیپلماتها	کلیه مرزهای دریایی و هوایی تا اطلاع ثانوی بسته	قبرس	۲۱
قرنطینه خانگی برای همه مسافران از جمله دیپلماتها به مدت ۲ هفته	تردد اتباع ایران و ایتالیا به شرط تست منفی کرونا کلیه پروازهای داخلی و خارجی لغو شده است. هواپیمایی قطر روزانه یک پرواز به مقصد دوحه دارد با پروتکل بهداشتی		فیلیپین	۲۲

اداره گذرنامه و روادید

	منع تردد اتباع ایرانی		۲۳	امارات
	کلیه مرزها منع تردد به جز دیپلماتها با اخذ مجوز		۲۴	اوکراین
	ممنوعیت ورود غیرعمرانی های اتباع شورای همکاری خلیج فارس از تمام مرزها به داخل کشور		۲۵	عمان
افراد دارای ویزای ترددی اجازه خروج از فرودگاه را ندارند. فقط فرودگاه شاردرگل باز است.	ایران ایر به صورت هفتگی با ارائه فرم خوداظهاری وارد پاریس می شوند.	دارندگان اقامت و ملیت فرانسه و دیپلماتها و دارندگان ویزای D از ایران می توانند بدون محدودیت وارد شوند.	۲۶	فرانسه
قرنطینه خانگی در جاکارتا انجام می شود	تردد دیپلمات ها با پرواز دوحه - جاکارتا امکان پذیر است. تردد اتباع عادی ممنوع است. از ۲۵ آوریل کلیه پروازها لغو شده است به جز پروازهای اختصاصی مقامات یا پروازهایی که برای بازگرداندن اتباع آن کشور می باشد.	محدودیت صدور روادید عادی برقرار است روادید دیپلماتیک صادر می شود	۲۷	اندونزی

اداره گذرنامه و روادید

تاکنون هیچ روادیدی جهت مأمورین موقت و ثابت صادر نشده است. ارائه گواهی سلامت به زبان آلمانی و یا انگلیسی فقط ۴ روز معتبر است.	در صورت داشتن روادید اجازه تردد خواهند داشت.	هیچ نوع روادیدی صادر نمی شود در خصوص دیپلماتها مأمورین ثابت مورد به مورد بررسی می شوند. در خصوص مأمورین موقت تا اطلاع ثانوی روادید صادر نخواهد شد.	اتریش	۲۸
وضعیت پروازی و پروتکل بهداشتی لازم قبل از سفر چک شود.	در صورت اجازه اقامت چه اتباع عادی و چه دیپلماتها اجازه ورود به کشور را دارند.	هیچ نوع روادیدی از هیچیک از مراکز ایران، ایوپی و ترکیه صادر نمی شود.	انگلیس	۲۹
تا اطلاع ثانوی	مرز بسته است و تردد وجود ندارد.	هیچ نوع روادیدی صادر نخواهد شد.	هند	۳۰
ورود و خروج به تونس ممنوع است.	تردد وجود ندارد.	هیچ نوع روادیدی صادر نخواهد شد.	تونس	۳۱
قرنطینه ندارند و مرزها باز است. شرایط پروازی و کشورها در مسیر تردد مورد توجه قرار بگیرد.	محدودیت تردد دیپلماتیک وجود ندارد. محدودیت تردد اتباع عادی تا اطلاع ثانوی	روادید توریستی و دانشجویی صادر نخواهد شد. روادید تجاری با ارائه رزرو پرواز رفت و برگشت صادر می شود. روادید خویشاوندان تحویل گرفته می شود ولی تاریخ صدور از تیرماه ۱۳۹۹ به بعد خواهد بود. روادید دیپلماتیک طبق روال گذشته صادر می شود	بلاروس	۳۲

اداره گذرنامه و روادید

<p>تا اطلاع ثانوی مسیر پروازی در حال حاضر از طریق اسپانیا و یا آستر دام امکان پذیر است که به قوانین ترددی آن کشور باید توجه شود.</p>	<p>۱۴ روز قرنطینه با انجام تست کرونا</p>	<p>هیچ نوع روادید عادی صادر نمی شود. ویزا دیپلماتیک طبق روال گذشته صادر می شود.</p>	<p>۳۳</p>
<p>کارکنان در قالب دور کاری فعالیت خواهند داشت.</p>	<p>تا تاریخ ۲ ماه می ۲۰۲۰ ورود اتباع خارجی ممنوع است.</p>	<p>بخش کنسولی صرفاً موارد ضروری را انجام خواهند داد</p>	<p>۳۴</p>
<p>یادداشت شماره ۰۴۳ مورخ ۱۳۹۸/۱۲/۲۶</p>		<p>خدمات کنسولی تا اطلاع ثانوی تعطی می باشد. فقط در موارد ضروری روادید ملی صادر خواهد شد</p>	<p>۳۵</p>
<p>یادداشت شماره ۵۱-۸۴۸۴ مورخ ۹۹/۰۲/۰۳ نامه قرمز نمایندگی کشورمان به شماره ۷۴۴۱۱۰۱۰۸۵ مورخ ۹۹/۰۲/۰۵</p>	<p>تردد برای دیپلمات ها و پرسنل ارتش و کارکنان امور بشردوستانه به اراضی آن کشور آزاد می باشد. تا ۱۳/می/۲۰۲۰ ورود اتباع خارجی به آن کشور ممنوع می باشد.</p>	<p>سفارت باز است و کارکنان در قالب دورکاری فعالیت دارند اما درخواست روادید دریافت نخواهد کرد</p>	<p>۳۶</p>

اداره گذرنامه و روادید

بازارها انجام نمی پذیرد.	ورود اتباع خارجی ممنوع است	سفارت باز است و خدمات ویزا ندارند جز موارد ضروری	اسپانیا	۳۷
یادداشت شماره ۰۴/۲۳ مورخ ۱۳۹۹/۰۱/۱۷	کلیه مرزها تا تاریخ اول می ۲۰۲۰ برای گذرنامه های سیاسی و خدمت و عادی مسدود می باشد. و برابر قانون جدید اتباع ایرانی دارنده گذرنامه عادی می بایست از تاریخ ۲۷/مارس/۲۰۲۰ جهت ورود به اکوادور روادید اخذ نمایند.	اخذ روادید برای اتباع ایرانی دارنده گذرنامه عادی	اکوادور	۳۸
۶۹۷۱۰۱۶۹۴ نامه کانبرا به تاریخ ۹۹/۰۲/۰۵	ورود اتباع خارجی تا اطلاع ثانوی ممنوع است حتی دارندگان روادید. مرزهای دریایی کاملا بسته است و مرزهای هوایی جهت دیپلمات های مقیم و مقیمین به صورت محدود باز می باشد.	سفارت باز است و بخش کنسولی فعال است.	استرالیا	۳۹
	ورود اتباع خارجی را به اراضی آن کشور تا ۱۳۹۹/۰۲/۲۵ ممنوع اعلام کرده بجز افراد مقیم و دیپلماتها		ارمنستان	۴۰

اداره گذرنامه و روادید

		مرز کویت برای اتباع خارجی و ایرانیان مقیم مسدود می باشد.	سفارت در تهران باز است	کویت	۴۱
طی یادداشت ۰۶۴ مورخ ۱۳۹۹/۰۱/۰۳	کلیه مرزها (سرخس - لطف آباد - باجگیران - اینچه برون) برای تردد نفر و کالا مسدود می باشد. حمل و نقل ریلی نیز در مرزهای زمینی ممنوع می باشد.		ارائه گواهی سلامت جهت ورود اتباع خارجی به اراضی آن کشور الزامی است	ترکمنستان	۴۲
یادداشت ۴-۱۲۹/۲۰ ۱۳۹۹/۰۱/۰۱	اعلام نموده از تاریخ ۱۳۹۹/۰۱/۱۷ کلیه مرزهای زمینی و هوایی جهت ورود اتباع خارجی به اراضی آن کشور به جز حمل و نقل باری تا ۳۱ می ۲۰۲۰ مسدود می باشد.		سفارت در تهران باز است و بخش کنسولی موارد ضروری را پیگیری می نماید.	جمهوری آذربایجان	۴۳

اداره گذرنامه و روادید

<p>یادداشت شماره ۴۳۹ مورخ ۱۳۹۸/۱۲/۰۹ و شماره ۵۶ مورخ ۱۳۹۸/۱۲/۲۷</p>	<p>ورود کلیه اتباع خارجی به استثنای دیپلمات ها و خانواده آنان همچنین رانندگان حمل کالای زمینی، کارکنان هواپیماها، کشتی ها و قطارها و اقوام متوفی به اراضی آن کشور ممنوع می باشد. دارندگان ویزای تزدی حتی برای دیپلماتها بسته است. زمینی بسته است به جز کالا و خدمات</p>	<p>فرزندان دیپلماتها با گذرنامه عادی نمی توانند وارد شوند.</p>	<p>روسیه</p>	<p>۴۴</p>
<p>طی نامه شماره ۳۹-۲۹۵ مورخ ۱۳۹۹/۱۲/۲۷</p>	<p>کلیه اتباع خارجی و دیپلماتها که قصد ورود به اراضی آن کشور را دارند می بایست ۱۴ روز در قرنطینه قرار گیرند.</p>	<p>انواع صدور روادید عادی ممنوع است به جز تجاری و بشر دوستانه</p>	<p>مقدونیه شمالی</p>	<p>۴۵</p>
<p>برای بازگشت بیش از یکصد نفر از اتباع کشور کره جنوبی مقیم ایران با پرواز اختصاصی ایران ایر به شماره ۵۲۶۴ ساعت ۲۲ تاریخ پرواز ۹۸/۱۲/۲۸ هماهنگی های لازم به عمل آمد.</p> <p>انجام تست کرونا در همه جا امکان پذیر است.</p>	<p>- تردد فقط از طریق هوایی امکان پذیر است. - به هنگام خروج مسافری در فرودگاه از همه مسافری در سه مرحله توسط دستگاه های ویژه و پزشک تست انجام می شود و در صورت مثبت بودن تست کرونا، از سفر وی ممانعت به عمل می آید. - به هنگام ورود نیز در فرودگاه تمامی مسافری (اعم از دیپلمات و اتباع کره و</p>	<p>تعلیق روادید صادر شده در ۱۷ فروردین ۹۹ و قبل از آن و اجرایی شدن آن از ۱۳۹۹/۱۲/۲۵ (هر ایرانی متقاضی ورود به کره جنوبی باید از تاریخ ۹۹/۱۲/۲۵ از سفارت آن کشور روادید جدید دریافت و توافقتنامه به شرح زیر امضاء نمایند: توافقتنامه تسهیلات قرنطینه، گواهی معافیت قرنطینه (برای دیپلمات ها) که باید توسط سفارت کره تایید شود، دریافت اطلاعات مربوط به مسافری که دارای گواهی معافیت قرنطینه هستند.</p>	<p>کره جنوبی</p>	<p>۴۶</p>

اداره گذرنامه و روادید

<p>هزینه تست و درمان بیماری کرونا رایگان است.</p> <p>- در صورت منفی بودن تست کرونای مسافری تازه وارد، یک نرم افزار ویژه در گوشی همراه مسافر نصب می شود و علاوه بر رصد روزانه، سابقه پزشکی فردی و بازدید های سرزده، به مدت ۲ هفته (در منزل یا هتل های مخصوص با تقبل هزینه از سوی مسافر) نیز قرنطینه می شوند.</p> <p>- در صورت مثبت بودن تست، مسافر جهت درمان رایگان به مراکز درمانی هدایت می شود.</p> <p>برای دیپلمات ها قرنطینه ۱۴ روز اجباری نیست.</p>	<p>تست کرونا را انجام و به مدت ۶ الی ۱۲ ساعت در مکان های معین در نزدیکی فرودگاه (رایگان) قرنطینه می شوند.</p>		
<p>از ۱۳ بهمن ۹۸ دیپلمات های مقیم در اماکن دیپلماتیک قرنطینه شدند.</p> <p>- پس از یک ماه تیم پزشکی در محل نمایندگی های دیپلماتیک</p>	<p>به دلیل آسیب پذیری و عدم برخورداری کافی پزشکی از ۱۳ بهمن ۹۸ مرزها بسته شد.</p>	<p>کره شمالی</p>	<p>۴۷</p>

اداره گذرنامه و روادید

<p>حاضر و پس از صدور گواهی سلامت دیپلمات ها مجاز به تردد در سطح شهر شدند.</p>				
<p>- بعد از اعلام محدودیت تردد در سطح شهرها و معابر عراق، عده زیادی از ایرانیان به به اجبار در سکونت گاهها، هتل ها و ... قرنطینه شدند که پس از ارتباط گیری آنها با بخش کنسولی سفارت ج.ا.ایران و بررسی مدارک آنها، تاکنون انتقال ۱۰۵ نفر از اتباع ایرانی از محل استقرار به مرز مهران انجام شده و این روند همچنان تا عادی شدن شرایط ادامه دارد.</p> <p>-دیپلماتها و کارکنان سفارتخانه ها هنگام ورود به عراق می بایست گواهی سلامتی نشان دهنده عدم ابتلا به ویروس کرونا را ارائه نمایند و بمدت ۲ هفته در سفارت و یا ساختمان مسکونی خود باقی (قرنطینه) بمانند.</p>	<p>در خصوص نیروهای کار خارجی شاغل در پروژه های (سرمایه گذاری و یا پیمانکاری) عراق ورود آنها مشروط بر رعایت موارد ذیل می باشد:</p> <p>۱- ارائه نامه صادر شده از سوی وزارتخانه ای که با آن همکاری دارند؛</p> <p>۲- تمامی کسانی که وارد کشور می شوند در مکانی که از قبل از سوی وزارت بهداشت عراق مورد تأیید قرار گرفته است، بمدت دو هفته اقامت خواهند داشت؛</p> <p>۳- افراد مشمول مندرج در بند یک و دو، در صورت وجود علائم بیماری ناشی از ویروس کرونا، نسبت به اعزام آنها به بیمارستان و تکمیل بررسی های لازم اقدام خواهد شد ."</p> <p>-کارگران و مهندسین شرکت های ایرانی که در زمان بحران کرونا به ایران بازگشته اند همچنان با منع ورود به اقلیم کردستان مواجه می باشند.</p>	<p>-با اقدام متقابل، کلیه مرزهای رسمی به روی اتباع دو کشور ایران و عراق بسته می باشد الا در موارد استثنائی (دیپلمات ها و کارکنان سفارت) و با هماهنگی قبلی.</p> <p>-کمیته ملی مبارزه با بحران کرونا در عراق در آخرین جلسه خود برنامه مدونی در ۴ بازه زمانی برای رفع محدودیت ها از جمله بازگشایی فرودگاه ها، ادامه پروازها و بازگشایی مرزهای زمینی از تاریخ ۱۱ تیرماه ۹۹ را اعلام نموده است.</p>	<p>عراق</p>	<p>۴۸</p>

اداره گذرنامه و روادید

<p>۳۰- پرواز در تاریخ های ۳۰ فروردین و ۱ اردیبهشت از شرکت العراقیه برای بازگرداندن اتباع عراقی وارد فرودگاه شهید هاشمی نژاد مشهد شد. به همراه پرواز اول تعداد ۵۶ نفر از دیپلماتهای عراقی با رعایت پروتکل های بهداشتی وارد کشور شدند.</p> <p>از تاریخ ۹۸/۱۲/۲۷ تا کنون بالغ بر ۴۰۰ نفر از اتباع ایرانی مقیم کردستان عراق که قصد بازگشت داشتند با کمک سرکنسولگری چابابرا ن در اربیل به کشور بازگردانده شده اند</p> <p>در تاریخ ۹۹/۲/۱۶ پایانه مرزی سیرابند به روی فعالیت های تجاری بازگشایی شد.</p> <p>فعالیت ها و تردهای تجاری، سوخت و واردات موادغذایی از ایران هم اکنون در سه گذرگاه مرزی بین المللی ترمچین، باشماق و پرویزخان در حال انجام است.</p>	<p>- گذرگاه مرزی شلمچه کماکان بسته می باشد. مقبره شده به زودی و بعد از موافقت طرف عراقی، این گذرگاه جهت تبادلات اقتصادی بازگشایی شود.</p> <p>- تجمع عده زیادی از اتباع عراقی در گذرگاه مرزی شلمچه به دلیل ممانعت مامورین مرزی عراقی از ورود آنها</p> <p>- اقلیم کردستان عراق: عادی سازی سه مرحله ای محدودیت ها از ۲۸ فروردین ۹۹ که در مرحله سوم رفع محدودیت های تردد مرزی و فرودگاهی مدنظر قرار خواهدگرفت.</p>	
-------------------------------------------------------------------------------------------------------------------------------------------------------------------------------------------------------------------------------------------------------------------------------------------------------------------------------------------------------------------------------------------------------------------------------------------------------------------------------------------------------------------------------------------------------------------------------------------------------------------------------------------------------	----------------------------------------------------------------------------------------------------------------------------------------------------------------------------------------------------------------------------------------------------------------------------------------------------------------------------------------------------------------------------------------------------------------	--

اداره گذرنامه و روادید

<p>سامورین دیپلماتیک و خانواده های آنان که قصد ورود به ویتنام دارند باید ۵ روز قبل از سفر به صورت رسمی مراتب را به اداره تشریفات و اداره کنسولی واخ ویتنام اعلام نمایند. - تمامی مرزهای زمینی، هوایی و دریایی بسته می باشد. - ایرانیان گردشگر چلمانده به کمک سفارت ج.ا.ایران با یک هواییمای قطری به کشور بازگردانده شدند.</p>	<p>- لغو تمامی پروازها به چین، عدم امکان بازگشت ملبورین دیپلماتیک به ویتنام تا اطلاع ثانوی - لغو تمامی پروازهای خارجی به مقصد ویتنام از ۱۳ فروردین ۹۹</p>	<p>روادید مسافرتی که به دلیل لغو پروازهای امکان بازگشت ندارند در هنگام خروج تمدید می شود. - تعلیق لغو روادید و عدم صدور روادید فرودگاهی و توقف صدور روادید برای تمام اتباع خارجی</p>	<p>ویتنام</p>	<p>۴۹</p>
		<p>تعلیق لغو روادید و عدم صدور روادید فرودگاهی</p>	<p>کامبوج</p>	<p>۵۰</p>
<p>تعدادی از اتباع ایرانی (حدود یکصد نفر) تقاضای بازگشت به ایران را نموده اند.</p>			<p>لبنان</p>	<p>۵۱</p>

اداره گذرنامه و روادید

	<p>لغو تمامی پروازها و تعطیلی فرودگاهها پروازها بصورت اضطراری و محدود است. محدودیت تردد زمینی برقرار است و صرفا با هماهنگی و مجوز انجام پذیر است. تردد در سطح ملی ممنوع و محدود اما دیپلماتها با ارائه مدرک تردد می کنند. برخورد با اتباع ایرانی به مانند سایر شهروندان ایتالیایی و براساس پروتکل های بهداشتی است.</p>	<p>تمدید اعتبار مدارک کشور ایتالیا (روادید گذرنامه کارت شناسایی، گواهینامه رانندگی و پروانه اقامت) به شرح زیر: ۱- اعتبار گذرنامه ها، کارت های شناسایی و گواهی نامه های رانندگی صادره از دولت ایتالیا که تاریخ انقضاء آن ها از ۱۱ / ۱۱ / ۱۳۹۸ بوده است تا تاریخ ۱۳۹۹ / ۶ / ۱۰ ۲- اتباع خارجی که با روادید معتبر یا با استفاده از رژیم لغو روادید وارد ایتالیا شده اند و به موجب قوه قهریه ناچار به ادامه اقامت در ایتالیا بعد از مدت زمان مجاز شده اند، نیازی به تمدید اعتبار روادید خود نخواهند داشت لیکن با برداشته شدن موانع موجود، موظف به ترک کشور ایتالیا می باشند . ۳- کلیه پروانه های اقامت صادره برای اتباع خارجی در ایتالیا که اعتبار آن ها از تاریخ ۱۱ / ۱۱ / ۱۳۹۸ تا ۲۷ / ۱ / ۱۳۹۹ منقضی شده اند تا تاریخ ۲۶ / ۳ / ۱۳۹۹ تمدید اعتبار شده اند</p>	<p>۵۲</p>
		<p>اسلواک</p> <p>تعطیل کلیه امور کنسولی از جمله صدور روادید توسط سفارت اسلواکی در تهران</p>	<p>۵۳</p>

اداره گذرنامه و روادید

<p>تمامی روادیدهای صادره برای اتباع کشورهای چین و کره جنوبی از سوی</p>	<p>- تاکنون اقدامی برای لغو پروازهای خارجی صورت نگرفته است اما پروازهای ورودی از چین و کره جنوبی فقط می توانند در دو فرودگاه «پاریتا» در شرق توکیو و «کانسای» واقع در «اوساکا» فرود آیند.</p>	<p>ابتدا به مدت یک ماه لغو روادید صادره برای اتباع ایرانی از اول فروردین ۹۹ و ممنوعیت ورود ایرانیان به ژاپن (اعم از مبداء ایران و یا سایر کشورها) و سپس تمدید آن تا اطلاع ثانوی</p>	<p>۵۴</p>
<p>وزارت خارجه کره، بی اعتبار اعلام شد، تمامی افراد(اعم از ژاپنی و غیر آن) که از چین و برخی مناطق کره جنوبی و ایران وارد ژاپن بشوند باید ۱۴ روز قرنطینه اجباری بشوند.</p>	<p>در حال حاضر پروازهای ورودی منحصر به دو فرودگاه «پاریتا» و «هاندانا» شده است.</p>	<p>دارندگان گذرنامه سیاسی و خدمت نیز باید روادید ژاپن را دریافت نمایند و پس از ورود مورد تست قرار گرفته و باتوجه به زمان بر بودن مراحل آن در مکان مشخص (نمایندگی) به مدت ۱۴ روز قرنطینه می شوند.</p>	
<p>تمامی مسافری در گروه های ۱۰ نفری از هواپیما خارج و تست PCR را انجام می دهند.</p>	<p>- تمامی مسافری خارجی تازه وارد باید فرم های وزارت بهداشت ژاپن را تکمیل نمایند و به مدت ۱۴ روز مجاز به استفاده از وسایل نقلیه عمومی نمی باشند.</p>	<p>- باتوجه به زمان بر بودن آزمایشات در صورت نیاز مسافری (و افراد مبتلا) در بدو ورود به مدت دو هفته در هتل نزدیک به فرودگاه به صورت رایگان قرنطینه می شوند.</p>	
<p>تمام مسافری ورودی که از ۱۴ روز قبل از ورود به ژاپن از کشورهای آسیایی، اروپایی و آمریکا بازدید داشته اند ملزم به انجام تست PCR و قرنطینه در اماکن تعیین شده می باشند.</p>	<p>... را داشته باشند.</p>	<p>دعدم اعتبار روادیدهای از قبل تایید شده برای اعضای APEC</p>	

اداره گذرنامه و روادید

<p>کلیه مسافران از کشورهای آسیایی، خاورمیانه و آمریکا چنانچه مدت توقف شان در مبداء بیش از ۱۴ روز باشد، حق ورود به ژاپن را ندارند. طبق یادداشت واصله از وزارتخارجه ژاپن در صورت مشکوک بودن ابتلا دیپلمات ها، در ابتدا مشاوره تلفنی و سپس به مرکزی معین شده برای انجام تست رایگان PCR معرفی می شوند.</p>				
	<p>اتباع خارجی که قصد ورود به اراضی آن کشور را دارند می بایست ۱۴ روز در قرنطینه قرار گیرند. تردد هوایی باز ولی تقریبا بدون رفت و آمد</p>	<p>سفارت تا اطلاع ثانوی تعطیل است ورود اتباع ایران با گذرنامه عادی اساسا ممکن نیست.</p>	مالزی	۵۵
<p>طی نامه شماره ۳۹۰۳۹۹ مورخ ۱۳۹۸/۱۲/۲۸</p>	<p>کلیه مرزها از ۲۹ اسفند به روی اتباع خارجی مسدود می باشد. کلیه پروازها متوقف شده است.</p>	<p>تنها دارندگان اقامت مجاز به ورود می باشند</p>	بولیوی	۵۶

اداره گذرنامه و روادید

<p>طی نامه شماره ۳۹-۱۳۵ مورخ ۱۲/۲/۷۷</p>		<p>مرزها را برای اتباع خارجی به جز امر بشردوستانه و حمل و نقل و مقیمین مسدود کرده است.</p>	<p>استونی</p>	<p>۵۷</p>
<p>نام شماره ۳۷۹۳۸۱ مورخ ۱۲/۱۸</p>	<p>ورود اتباع چند کشور از جمله ایران به اراضی آن کشور ممنوع است.</p>		<p>آنگولا</p>	<p>۵۸</p>
<p>استثنائات ترددی: ۱- تردد افراد مرتبط با ۲- اتباع شیلی ۳- حامله های باری به داخل ۴- تردد ترانزیتی ۵- خدمه گروه پروازی کلیه ۶- شرکت های هواپیمایی ۷- پدریا مادر شیلیایی ۸- افراد مرتبط با کمک های بشردوستانه و همکاری های بین المللی ۹- دیپلمات های مقیم (دارندگان گذرنامه سیاسی و خدمت) که دارای کارت شناسایی وزارت خارجه شیلی می باشند. ۱۰- دارندگان برگ عبور موقت</p>	<p>از تاریخ ۹۸/۱۲/۲۸ تمامی مرزها برای تردد اتباع خارجی مسدود شده است</p>		<p>شیلی</p>	<p>۵۹</p>

اداره گذرنامه و روادید

			سفارت باز است و بخش کنسولی نیمه تعطیل است. کلیه روادید صادره تا قبل از ۲۸ مارس ۲۰۲۰ باطل اعلام شده و روادیدهای صادره پس از آن امکان ورود به چین را دارند.	چین	۶۰
نام شماره ۳۸۰۶۶۱ نام فرمز نمایندگی کشورمان به شماره ۶۶۰۱۱۰۰۹۹۹ مورخ ۹۹/۰۱/۰۴	کلیه پروازها تا تاریخ ۹۹/۰۲/۱۸ تعلیق گردیده و مرزهای زمینی نیز مسدود می باشد.	تعلیق کرده است.	صدور روادید جهت اتباع چند کشور از جمله ایران را	بنگلادش	۶۱
طی نامه شماره ۳۹۰۳۷۸ مورخ ۱۳۹۸/۱۲/۲۷	مرزهای آن کشور جهت ورود کلیه اتباع خارجی به جز افراد مقیم، حمل دارو، غذا، رانندگان ترانزیت و کالاهای مهم به مدت یک ماه مسدود می باشد.			دانمارک	۶۲

اداره گذرنامه و روادید

<p>در ۵ پایانه مرزی کشیک شبانه روزی بهداشتی برقرار گشته است. مسافری از این مناطق پس از تست کرونا در باره ورود آنان به کرواسی تصمیم گیری خواهند شد. رسماً پروازهای خارجی لغو نشده اما عملاً بر میزان سفرهای هوایی تأثیر گذاشته و کاهش یافته و بسیاری از پروازهای ایتالیا به کرواسی نیز لغو شده است</p>	<p>تمامی اتباع خارجی (۷۰ کشور) از جمله ایران که وارد کشور کرواسی می شوند به مدت ۱۴ روز در قرنطینه اجباری قرار خواهند گرفت.</p>	<p>کرواسی</p>	<p>۶۳</p>
<p>از اعضای سفارت خانه های خارجی خواسته شده است: پس از بازگشت از خارج از کشور بویژه بازگشت از مناطق پرخطر با پزشک خود و یا مسئولین مرکز سلامت عمومی پراگ تماس بگیرند و به مدت ۱۴ روز در قرنطینه بمانند.</p>		<p>چک</p>	<p>۶۴</p>

اداره گذرنامه و روادید

<p>-تمامی افراد تازه وارد باید علاوه بر انجام تست کرونا به مدت ۱۴ روز با هزینه شخصی قرنطینه شوند. -مرزهای زمینی فقط برای حمل بار و کالاهای ضروری باز هستند -پروازهای محدود از برونی به چند کشور صورت می گیرد و اجازه بازگشت هم دارند. -درمان بیماری کرونا برای همه از جمله دیپلمات ها رایگان است.</p>	<p>تعمیرات کلیه اتبایع کشورهای آمریکا، اروپا، انگلیس، ایران و استان های درگیر چین ممنوع می باشد -کلیه مقیمین (اعم از اتبایع برونی و خارجی و دیپلمات) اجازه خروج از کشور را ندارند مگر با کسب مجوز از دفترنخست وزیری</p>	<p>برونئی</p>	<p>۶۵</p>
<p>- محدودیت های ورود به شرط داشتن مجوز اقامت شامل دیپلمات های مقیم نمی شود. اما باتوجه به لغو پروازها عملا قادر به ورود یا خروج به بوسنی نمی باشند.</p>	<p>مرزهای های هوایی (به استثناء پروازهای حامل کمک های انسان دوستانه واقلام ضروری) بسته می باشد. - کلیه اتبایع ایرانی (اعم از دارندگان گذرنامه عادی، سیاسی و خدمت) در هنگام ورود ۱۴ روز در مراکز تعیین شده (با منازل شخصی) قرنطینه می شوند. -مرزهای زمینی افراد ورودی به اردوگاه</p>	<p>بوسنی</p>	<p>۶۶</p>

اداره گذرنامه و روادید

	<p>های خاصی برای قرنطینه هدایت می شوند. - دیپلمات های خارجی در صورت وخامت حال در بیمارستان بستری و قرنطینه می شوند.</p> <p>همراهی زمینی فقط برای کامیون های حامل مواد غذایی و کالاهای ضروری باز است.</p> <p>- قرنطینه افراد در منزل یا مراکز درمانی تعیین شده</p>		
<p>- با توجه به شرایط بوجود آمده به دلیل بیماری کرونا و با تلاش وسیع سفارت ج.ا.ایران تعداد ۱۰۹ زندانی ایرانی از گرجستان به ایران انتقال یافتند.</p> <p>- با ثبت اولین گرجی مشکوک به کرونا که از مرز ایران وارد شده بود، تمامی مجوزهای تردد کامیون های حامل بار به حالت تعلیق درآمد و تعدادی کامیون در داخل گرجستان، در مرزها متوقف شدند که سرانجام با تلاش نمایندگی های ج.ا.ایران در تفلیس، آنکارا، باتومی و دفتر وزارت خارجه در ارومیه</p>	<p>وزارت خارجه گرجستان طی یادداشت به کلیه نمایندگی های خارجی مقیم آن کشور ابراز داشته: به منظور تسهیل در ورود به خاک گرجستان از دیپلمات ها و اعضای خانواده خواسته فرم موصوف به «قرنطینه گرجستان تکمیل و به آدرس ایمیل درج شده تعیین شده ارسال نمایند.</p> <p>در وهله نخست مرزهای زمینی و هوایی با ایران و چین بسته شد که مشکلات زیادی برای ایرانیان مقیم و گردشگر بوجود آورد.</p> <p>- دانشجویان ایرانی می توانند با پروازهای یک طرفه به ایران بازگشته و کلاس های خود را به صورت اینترنتی دنبال نمایند.</p>	<p>تعلیق اعطای روادید به اتباع خارجی، به استثناء: نمایندگان دیپلماتیک و سازمان های بین المللی و اعضای خانواده آنها - افرادی که به عنوان مأموریت های بشردوستانه به گرجستان وارد می شوند - خانواده هایی که همسر یا یکی از فرزندان زیر سن قانونی، تبعه گرجستان باشند.</p>	<p>۶۷</p> <p>گرجستان</p>

اداره گذرنامه و روادید

<p>این مشکل مرتفع و کامیون داران از طریق موزترکیه به کشور بازگشتند. تاکنون تعداد ۸۶۹ نفر از اتباع ایرانی از تاریخ ۴ اسفند ۹۸ تا ۱۴ فروردین ۹۹ یا ۶ پرواز به ایران بازگردانده شده اند.</p>	<p>- اقامت اتباع خارجی که تا ۹۸/۱۲/۲۴ به صورت قانونی در گرجستان حضور داشتند به صورت مشروط تا ۹۹/۴/۱۰ تمدید خواهد شد.</p>		
<p>- اختصاص یک بیمارستان به دیپلمات های مقیم و خانواده های آنان برای انجام تست کرونا - کلیه افراد تازه وارد قرنطینه به مدت دو هفته اجاری است (دیپلمات های می توانند در محل سکونت خود قرنطینه شوند). - در ماه های فروردین و اردیبهشت ۹۹ با همکاری خطوط هوایی لهستان طی یک طرح ویژه که بزرگترین عملیات در تاریخ دیپلماسی و کنسولی لهستان محسوب می شود بیش از ۵۵ هزار نفر از اتباع لهستانی در خارج از کشور به لهستان بازگردانده شدند و با کمک وزارتخارجه لهستان بیش از</p>	<p>حلفی شدن ورود کلیه اتباع خارجی (به جز اتباع لهستان و دیپلمات های مقیم که در بدو ورود باید دو هفته قرنطینه شوند) - کلیه مرزهای زمینی، هوایی و دریایی بسته می باشد (به استثنا پروازهای باری، امداد رسانی و هواپیماهای چارتری برای انتقال اتباع خارجی</p>	<p>لهستان</p>	<p>۶۸</p>

اداره گذرنامه و روادید

<p>۲۰۰۰ نفر از اتباع سایر کشورها از لهستان به کشور خود بازگردانده شدند.</p>				
<p>براساس اخبار موقت تعداد زیادی از کارکنان فرودگاه بین المللی دوحه (حمد) و قطر ایرویز به کرونا مبتلا شده اند. نیمی از کارکنان فرودگاه در منزل و فرودگاه نیمه تعطیل می باشد.</p> <p>فرودگاه به صورت نیمه تعطیل و تنها برای خدمات پروازهای ترانزیت و باری فعالیت دارد.</p>	<p>مرز بسته است و تردد وجود ندارد، ترانزیت مقدور است.</p> <p>ورود به قطر حتی برای کسانی که کارت اقامت دارند تا اطلاع ثانوی ممنوع است.</p> <p>کارت اقامت قابل تمدید است و مشمول جریمه نمی شوند.</p> <p>مرز دریایی صرفاً جهت امور تجاری و بارگیری امکان پذیر است.</p>	<p>به دلیل توقف پروازها، وزارت کشور عراق اعلام نمود روادید گردشگری اتباع خارجی که تاکنون در قطر حضور دارند به طور خودکار تمدید شده است.</p>	<p>قطر</p>	<p>۶۹</p>
	<p>مرز بسته است و تردد وجود ندارد. تا اطلاع ثانوی مرز ورود برای دیپلمات ها نیز مسدود است.</p>	<p>هیچ نوع روادید صادر نمی شود. روادیدهای صادره قبلی نیز باطل اعلام شده است.</p> <p>در مورد دیپلمات ها به صورت موردی بررسی می شود و بر اساس نظر سفیر عمل می گردد.</p>	<p>تایلند</p>	<p>۷۰</p>
<p>نامه قرمز نمایندگی کشورمان به شماره ۷۲۸۱۱۰۰۹۸ مورخ ۹۹/۰۲/۰۵</p>	<p>کلیه مرزها مسدود گردیده به استثنای تردد کامیون های حمل موارد ضروری و دیپلمات های مقیم</p>		<p>اروگونه</p>	<p>۷۱</p>

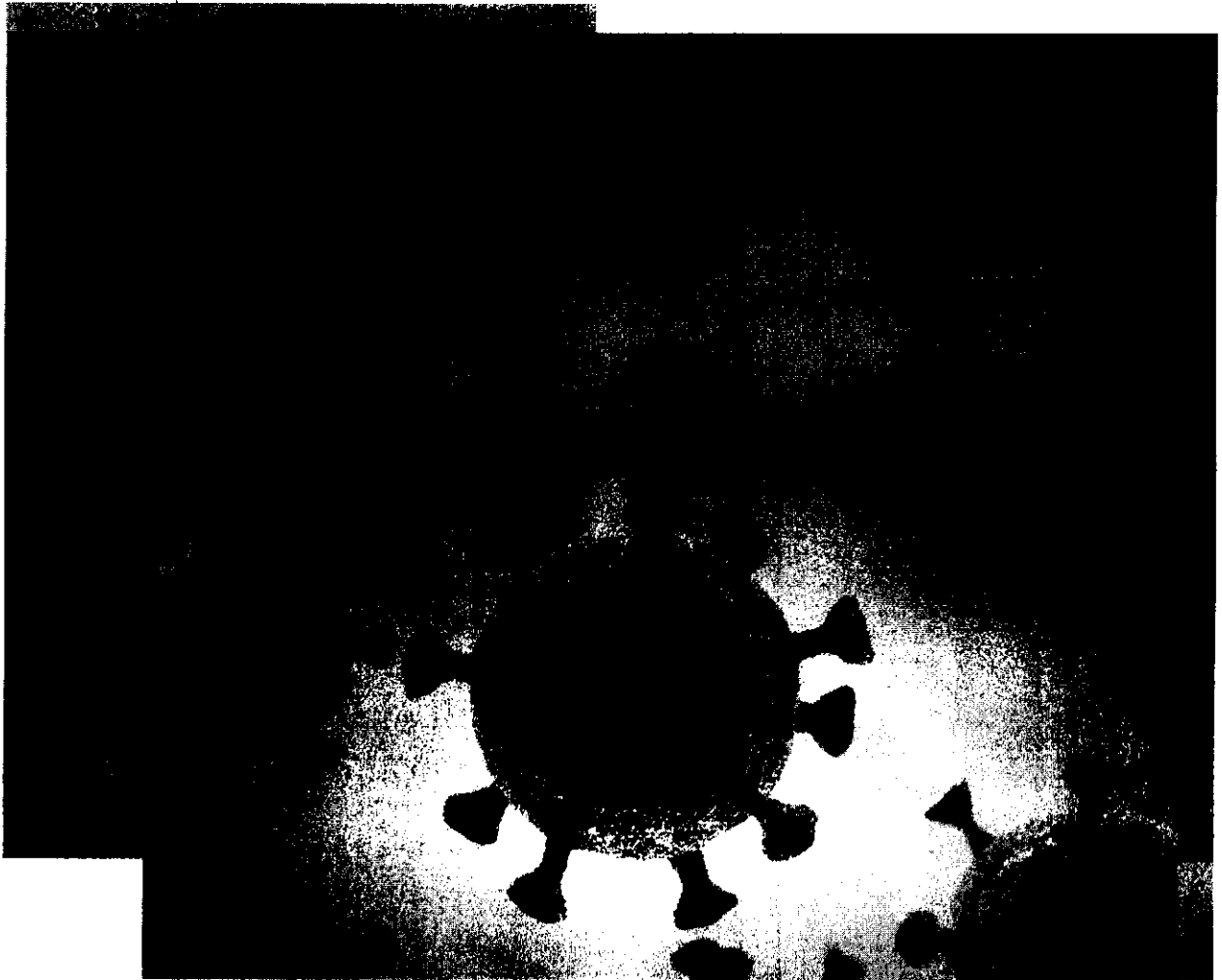
اداره گذرنامه و روادید

	مرزهای هوایی و دریایی بر روی مسافران و گردشگران بسته است.		کوبا	۷۲
<p>-تلمی مسافران در مبادی ورودی مورد معاینه پزشکی و تب سنجی قرار گرفته و باید فرم های غربالگری را تکمیل نمایند. - مسافران کشورهای پرخطر مانند چین، فرانسه، ایتالیا و ایران ۲۸ روز در محل قرنطینه می شوند.</p>	<p>مرزهای زمینی بسته است از ۲۹ اسفند ۹۸ فرودگاه های صربستان تعطیل بجز پروازهای انسان دوستانه</p>	<p>سفر دیپلمات های غیر مقیم نیاز به مجوز دارد برای سفر اتباع ایران (گذرنامه عادی) در حال حاضر هیچ مجوزی صادر نمی شود.</p>	صربستان	۷۳
	<p>مسدود شدن مرزهای هوایی، زمینی برای اتباع کشورهای چین، کره جنوبی، ایران و ایتالیا امکان ورود برای دیپلمات ها مشروط به ورود افراد با قرنطینه ۱۴ روزه می باشد.</p>	<p>امکان ترده برای دیپلمات های وجود دارد با اطلاع قبلی و ارسال یادداشت رسمی اما باید به مدت ۱۴ روز در قرنطینه بمانند.</p>	مجارستان	۷۴
	<p>کلیه مرزها بسته است تا اطلاع ثانوی پروازها انجام پذیر نیست. راجع به دیپلماتها وزارت خارجه اعلام نظری نکرده است.</p>		آلبانی	۷۵

اداره گذرنامه و روادید

	مرزها زمینی و هوایی بسته است.	ورود کلیه افراد عادی و دیپلماتیک ممنوع است به جز موارد بسیار اضطراری از طریق هماهنگی واخین	نیجریه	۷۶
در صورت منفی بودن تست کرونا قرنطینه ندارند.	پروازها تا اطلاع ثانوی لغو است. مرز زمینی فقط برای بازگشت اتباع ونزوتلا باز است. ورود و خروج دیپلماتها تنها با یادداشت رسمی		ونزوتلا	۷۷
	کلیه مرزها تا پایان ماه مبارک رمضان تعطیل است.	صدور کلیه روادید غیرممکن است.	امان	۷۸
فرودگاه داکار تعطیل است فقط پروازهای باری اجازه تردد دارند.	کلیه مرزها تا تاریخ ۱۰ خرداد بسته است.		سنگال	۷۹
	کلیه مرزها بسته است.		کنگو دموکراتیک	۸۰

RJ



Albania

Updated on 22/03/20

From March 22th, the following applies:

Restrictions on movements

- Tirana airport suspends all flights to and from Germany, Switzerland, Austria and Hungary. Very limited connection to Istanbul is maintained.
- Movement of people outside their home/household is strictly limited from 05.00h -13.00h. People can leave their home only for professional interests and for buying goods or medical supplies. From 13.00h until 05.00h of the next day, only authorised personnel can leave their home.
- International and domestic passenger transport is forbidden.
- Transport of goods and medical supplies is exempted from the provision, prior to authorisation.

Source: ANALTIR

Argentina

Updated on 21/04/20

Facilltation measures

- The Decree of Necessity and Urgency, established on 19 March by the National Executive, has determined preventive and compulsory social isolation for the general population, but has excluded the motor transport of cargo as it is considered essential for the normal functioning of society. It therefore ensures the flow of the transport of goods, oil, fuels and LPG, any activities related to agriculture, fishery and food production and distribution. This essential service also includes the home delivery of food, medicines, cleaning and hygiene products and other necessities, as well as the collection, transport and treatment of urban, hazardous and pathogenic solid waste.

Recommendations of the association

- FADEEAC recommends reducing staff to a minimum, leaving in place a dedicated team to enable the smooth operation of each company until 31 March. These might include administrative workers or mechanics, among others. According to FADEEAC, it is also important to remember that based on previous experience, complications may arise in some parts of the country with the application of these rules, and that in this instance some jurisdictions may apply exceptional measures and restrict freight transport operations. That is why the FADEEAC COVID19 Crisis Committee is available to provide legal support and assistance to resolve any doubts and discuss potential conflicts detected by carriers along the country's routes. To request information and for enquiries or complaints about irregular situations, contact the CRISIS Committee FADEEAC COVID19 via Whatsapp message only, +549 11 37649391, 7 days per week, from 08:00 to 22:00.

Source: FADEEAC

Armenia

Updated on 7/04/20

Restrictions at borders

- According to Decision No.31 of the Commandant's Office of the Republic of Armenia, dated 3 April 2020, the transportation of all types of goods between the Islamic Republic of Iran and the Republic of Armenia (export, import, transit) can be carried out at the Meghri border crossing point.
- All goods from the Islamic Republic of Iran are subject to transshipment, except for those goods which have the written permission of the State Revenue Committee.
- Armenia has no transport restrictions affecting any other country.

Source: AIRCA

Austria

Updated on 06/05/20

Restrictions at borders

Entry to Austria (generic rules):

- Austria has reintroduced temporary border controls. These measures applies until either 7 May (for borders Slovakia and Czech Republic), 31 May (for borders with Germany, Italy, Switzerland and Liechtenstein) or 11 November (for borders with Hungary and Slovenia).
- Persons from the following neighbouring countries - Italy, Switzerland, Liechtenstein, Germany, Hungary, Slovenia, Slovakia, and the Czech Republic - wanting to enter Austria must present a medical certificate that can be filled out in German, English or Italian, which proves that their test for SARS-CoV-2 is negative. The medical certificate must not be older than four days at the time of entry, otherwise the authorities may refuse entry. The regulation applies until 31 May, **freight and commuter traffic is exempted.**
- **Health checks are carried out at all border crossings.**

Austria-Italy:

- Austria has reintroduced temporary border controls at the borders with Italy. Truck drivers must undergo official health checks when entering Austria.
- Smaller border crossing points are closed. Open border crossings are: Brenner, Sillian, Reschenpass and Thörl-Maglern. Traffic can be monitored via webcams here.

Austria-Germany:

- On the Austrian side, border controls have been implemented at the border with Germany since 19.03.2020. Persons entering or transiting through Austria are obliged to undergo a medical examination for suspected COVID-19 before crossing the border by order of the health authorities. This medical examination may also be carried out for persons crossing the border for the purpose of goods or commercial transport or for commuting.

Austria-Switzerland:

- Freight traffic and cross-border commuters can cross the Swiss border and return to Austria without restrictions.
- the following border crossings are open:
 - Tirol – Pfunds (Goods/passenger traffic)

- Vorarlberg – Mäder (Goods/passenger traffic)
- Vorarlberg – Lustenau (Goods/passenger traffic)
- Vorarlberg – Hohenems (Goods/passenger traffic)
- Vorarlberg – Wohlfurt (Goods traffic)

Austria-Hungary:

- o The following border crossings are available for international goods traffic (traffic to and from Hungary):
 - Hegyeshalom/Nickelsdorf
 - Sopron/Klingenbach
 - Rábafüzes/Heiligenkreuz
- o Exclusively for bilateral Austria-Hungary freight traffic (driver must citizen from Hungary or Austria), the following border crossings are also available:
 - Bucus/Schachendorf
 - Kőszeg/Rattersdorf
 - Kópháza/Deutschkreutz
- o Traffic can be monitored via webcams [here](#) and [here](#).

Austria-Slovenia:

- o Since 18 March, small border crossings between Austria and Slovenia are closed. The following border crossing points are still open for international traffic:
 - Bonisdorf – Kuzma
 - Mureck – Trate (5:00 – 21:00)
 - Radlpaß – Radelj (5:00-21:00)
 - Sieldorf – Gederovci
 - Spielfeld (Autobahn) – Šentilj
 - Bad Radkersburg – Gornja Radgona
 - Karawankentunnel (A11) – Karavanke (A2)
 - Loibltunnel – Ljubelj (5:00 – 21:00)
 - Lavamünd – Vič (5:00-23:00)
 - Grablach – Holmec (5:00-08:00 und 15:00-18:00)
- o Freight traffic is excluded from the restrictions on both sides and for the most part circulates without problems.

Austria-Slovakia:

- o From 10 April, Austria introduces border controls with Slovakia. Furthermore, from 14 April, new requirements also apply: if requested by the health authorities, drivers should be subject to medical examination. Freight transport and commercial transport (with the exception of commercial passenger transport), and commuters are not affected by these measures.
- o The following border crossings are open for goods transport.
 - Kittsee – Bratislava/Jarovce

- Hohenau – Moravský Svätý Ján (between 05:00 - 24:00 also trucks up to 7.5t)

Austria-Czech Republic:

- o From 10 April, Austria implemented controls at the border with the Czech Republic (especially checking travel documents). From the same date, additional health checks are also introduced at the Austrian border. Czech commuters, as well as freight transport and commercial transport, currently do not require a medical certificate.
- o Czech commuters entering Austria must have the following documents:
 - Austrian commuter certificate
 - Travel documents (best: passport)
 - Further recommended: Copy of the employment contract
- o Drivers and companies are advised that double manning is permitted, provided that appropriate safety distances (1m), masks and the general COVID-19 rules of conduct are observed. It is mandatory to wear a mask in public places (when entering service stations, toilet facilities, petrol stations – inside).

Facilitation measures

- o On 10 April, the Austrian Government granted a further relaxation of driving and rest time rules. The following relaxations apply to national and international transport from **until 31 May**:
 - Art. 6.1: replacement of the maximum daily driving limit of 9 hours with one of 11 hours.
 - Art. 6.2: replacement of the maximum weekly driving limit of 56 hours with one of 60 hours.
 - Art. 6.3: replacement of the maximum fortnightly driving limit of 90 hours with one of 100 hours.

Relaxations set out by the previous decree are no longer in place.

- o The weekend and holidays traffic bans for goods vehicles over 7.5 tonnes are suspended until 17 May (official text [here](#)).

Source: AISÖ

Azerbaijan

Updated on 9/04/20

Restrictions on movements

Goods:

- o In accordance with the decision of the Government of the Republic of Azerbaijan, foreign drivers of freight vehicles will be able to enter the territory of Azerbaijan or transit through Azerbaijan without obstacles.
- o **Maritime transportation** (including trucks and container trans-shipment) with certain restrictions with neighbouring countries (Turkmenistan and Kazakhstan) is open and ongoing.
 - Only Turkmen freight drivers can use Turkmenistan ships heading to their country. Also, only trailers and semi-trailers will be allowed to be loaded on to the Turkmen ships.



COVID-19 Outbreak Road Transport

iru.org/covid19



- All drivers are obliged to test in the Port of Baku, in the guarantee zone before loading. Only the drivers with negative test result certificates can enter Turkmenistan and Kazakhstan. The test results are made available within 6-8 hours.
- At the Port of Baku, truck drivers wait for the ship in dedicated clean zones and food is being provided.
- o **Road Transport:** all border-crossing points (with Iran, Russia, Georgia and Turkey) are open for road transport (only for freight).
 - Accompanied (police escort) freight vehicles from Iran and from Alat port, heading in the Georgia direction, are allowed to cross the borders of Azerbaijan.
 - According to the order of the President of the Republic of Azerbaijan, free food and rest places are provided for international truck drivers.

Passengers:

- o The border between Azerbaijan and Iran is closed to all passenger traffic as of 29.02.2020.
- o The border between Azerbaijan and Georgia is closed to all passenger traffic as of 14.03.2020.
- o The border between Azerbaijan and Turkey is closed to all passenger traffic as of 14.03.2020.
- o The border between Azerbaijan and Russia is closed to all passenger traffic as of 18.03.2020.

Note: In all these cases, allowances are made for citizens of Azerbaijan to cross the border to return home, and vice-versa.

Other:

- o The visa registration through "ASAN Viza" electronic portal is suspended due to the global epidemic situation.

Useful links and hotline:

- The State Agency on Mandatory Health Insurance (TABIB)
- COVID-19 Hotline of TABIB: 1542
- Operational Headquarters under the Cabinet of Ministers of the Republic of Azerbaijan
- Ministry of Emergency Situations of the Republic of Azerbaijan (information in Azerbaijani only)

Source: Ministry of Transport, Communications and High Technologies of the Republic of Azerbaijan

Belarus

Updated on 30/04/20

- o Belarus still doesn't close its borders for international road transport.
- o In accordance with Governmental regulation No. 171, all persons arriving to Belarus from countries where COVID-19 infection has been registered, are obliged to put themselves into self-isolation for 14 calendar days and are not allowed to cross the Belarusian border until self-isolation period is over. **The above requirement is not applicable to drivers engaged in international road transport.**
- o Comments of customs authorities of Belarus regarding transit in such a serious epidemiologic situation can be found [here...](#)

Contact us:
information@iru.org

- The Government of Belarus has issued a Regulation No. 208 of 8 April 2020 which introduces additional restrictive measures. This document shall enter into force on 10 April 2020. The new regulation notably requires that self-isolation requirements shall also be applicable to drivers after completion of international road transport of goods in the territory of Belarus. This also includes drivers who were replaced, in the course of the transit transport operation, and are arriving from countries where COVID-19 has been registered. This applies until the next road transport operation or within 14 calendar days. The regulation also requires that drivers performing international road transport operations across the territory of Belarus, must have personal protective equipment (medical masks, gloves) on board and use them when they leave the cabin. Read more in Russian...
- On 28 April, in accordance with the amendments to the Decree of the Council of Ministers No. 171 "On measures to prevent the importation and spread of infection caused by the coronavirus COVID-19", the Ministry of Transport and Communications of the Republic of Belarus provided an **updated map of routes for vehicles transiting through the territory of the Republic of Belarus** which indicate the locations for stopping/parking, rest and refueling. In particular, an additional stopping/parking point has been included: M-1/E30 Brest (Kozlovichi) - Minsk - border of the Russian Federation (Redki), 6 km (right) - fuel station Tatbelnefteprodukt.
Maps can be downloaded using the following links: [Карта \(РУС\)](#), [Map \(ENG\)](#)
- Extended sanitary norms and rules published by the Belarusian Health Ministry also oblige transit drivers have masks and gloves and use them whenever they leave the cabin.

Sources: BAMAP (from the Ministry of Health, State Border Committee of Belarus and Council of Ministers of the Republic of Belarus)

Belgium

Updated on 04/05/20

Restrictions on movements

- On 4 May 2020, the first phase of a de-confinement plan started. Teleworking stays the norm, but non-essential businesses offering business-to-business solutions can restart activity. Social distancing measures are obligatory. In case this is not possible, mouth masks should be worn. Stores selling materials to produce mouth masks are open. The second phase of the plan should start on 11 May, the third phase on 18 May. Much will depend on developments in the number of contaminations, hospitalised patients and fatalities.
- These measures have no consequences for international freight transport and drivers. However, a number of companies have been forced to close because they are unable to respect the social distancing rules or are short of material to continue the production process.
- Collective passenger transport normal timetables are resumed and mouth masks become mandatory on board and in the stations. In line with the advice regarding unnecessary journeys abroad, all coach services are in a lockdown phase. As schools have been closed, all related transport has been suspended, apart from schools requiring transport to respect their duty of day care for children from

families working in key roles, such as health care workers. The professional training for driving licences or continuous education, and even MOT control have been suspended and appropriate measures are taken to waive the potential validity violations.

Facilitation measures

- On 13 April, relaxations on driving and rest time rules in Belgium have been slightly adapted and limited. For drivers transporting essential goods (food supplies, medicines, medical equipment, fuel), the following applies:
 - Increase of the maximum weekly driving limit from 56 hours to 59 hours.
 - Increase of the maximum fortnightly driving limit from 90 hours to 96 hours.
 - Possibility to postpone a weekly rest period beyond seven-24 hour periods (instead of six).
 - Possibility to take 2 consecutive reduced weekly rest periods, provided that:
 - a) the driver takes at least 4 weekly rests in 4 consecutive weeks, of which 2 are regular weekly rests; and
 - b) compensation for a reduced weekly rest shall be taken before the end of the fourth week.
- For all other drivers, there is the possibility to take the regular weekly rest in the vehicle, provided that it has suitable sleeping facilities and is maintained. Such exemptions apply to national and international goods transport.
- Exemptions for both categories apply until 31 May.

FEBETRA has created a comprehensive webpage on measures taken in Belgium. The page can be consulted in Dutch and French.

Sources: FEBETRA, FBAA and Official News Agencies

Brazil

Updated on 23/03/20

- IRU member NTC & Logística has reported that in spite of the critical situation in Brazil, and considering the crisis ahead, all entities representing road freight transport and logistics are committed to sharing as much information as possible with transporters:

"We are monitoring all measures being taken by public and private agencies in relation to traffic, working conditions, preventive measures for the health and safety of employees and service providers, the closing of establishments, problems and difficulties in fulfilling their transportation contracts, restrictions of any kind and all measures of an economic nature that are being studied by the government, in all areas.
- The situation calls for organised planning and responsibility in guaranteeing the supply of essential items concerning public health, i.e. items in relation to personal hygiene, medicines, food and hospital supplies, as well as other priorities.
- We are aware of the concern of businesses in the sector and their desire to maintain that business, along with jobs and their financial commitments, and we confirm that we are in constant discussion with the government on all levels.

- The link below accesses a guide to actions that can be taken by companies in relation to labour issues, which will be updated as the government discloses new legislative measures on this matter: [Coronavirus Specific Legislation Impacting Operations.](#)

Source: NCT & Logistica

Bulgaria

Updated on 7/05/20

Restrictions on movements

- On 13 March 2020, Bulgarian authorities introduced a state of emergency in the country. Currently the state of emergency has been **extended until 13 May**.
- In a new order issued on 6 April, the Minister of Health has confirmed the temporary entry ban for all third country (non-EU) nationals through all border crossing points by all means of transport. Entry bans apply to all persons coming from the following countries, irrespective of their nationality: Italy, Spain, France, United Kingdom, Germany, the Netherlands, Switzerland, Austria, Belgium, Lichtenstein and Luxembourg.
- The following categories are excluded from the prohibitions above:
 - Bulgarian citizens, family members of Bulgarian citizens, persons with permanent, long-term residence status in the territory of the Republic of Bulgaria and members of their families;
 - Medical professionals, medical scientists and social workers, if the purpose of their journey is linked to their professional work;
 - Transport personnel engaged in the carriage of goods, aircraft crews engaged in commercial air transport and other transport personnel, as appropriate;
 - Foreign officials (Heads of State, Government, etc.) and members of their delegations, as well as diplomats, officials of international organisations, military personnel and humanitarian workers carrying out their duties;
 - Persons travelling for humanitarian reasons;
 - Nationals of Member States of the European Union and Schengen States (including San Marino, Andorra, Monaco and the Vatican) and third-country nationals directly involved in the construction, maintenance, operation and security of strategic and critical infrastructure of the Republic of Bulgaria; and
 - Frontier workers and seasonal farm workers.
- Transit through the territory of the Republic of Bulgaria is allowed for:
 - Nationals of Member States of the European Union and Schengen States (including San Marino, Andorra, Monaco and the Vatican) and their family members in order to return to their country of residence;
 - Third-country nationals who hold a long-term residence permit in another Member State of the European Union or in a Schengen country (including San Marino, Andorra, Monaco and the Vatican) and their family members in order to return to their country of residence;
 - Citizens of Serbia, the Republic of Northern Macedonia, Montenegro and Turkey in order to return to their country;
 - Transport personnel engaged in the carriage of goods, aircraft crews engaged in commercial air transport and other transport personnel, as appropriate, to which the special rules apply.
- Bulgarian truck drivers arriving from a country with registered Covid-19 cases are subject to the 14-day quarantine period. During the quarantine period they are permitted to transit Bulgaria for the purpose of carrying out or completing international transport:

- to transit through the territory of the Republic of Bulgaria
 - to be in the cab of the truck;
 - to drive the truck;
 - to carry out loading and unloading activities; and
 - to leave the territory of the Republic of Bulgaria before the quarantine period has ended.
- o The following regime has been introduced for non-Bulgarian drivers coming from a country with registered COVID-19 cases:
 - drivers of goods vehicles transporting goods destined for the Bulgarian market should enter the territory of the Republic of Bulgaria, unload the goods transported and/or load goods, and immediately leave the territory of the Republic of Bulgaria; and
 - drivers of goods vehicles transporting goods destined for other countries are permitted to transit through the Republic of Bulgaria on a route determined by the Road Infrastructure Agency.
 - o The border health authorities shall issue an instruction note to drivers passing through the territory of the Republic of Bulgaria which shall specify:
 - the date and time at which they should leave the territory of the Republic of Bulgaria; and
 - the border crossing point at which they have to exit.
 - o The determined deadline for leaving the territory of the Republic of Bulgaria may not exceed 24 hours from the issuance of the instruction note.
 - o In cases where drivers of goods vehicles which are allowed to transit Bulgaria, but due to a ban by a neighbouring state cannot leave Bulgaria, a place will be determined where the truck and the driver must stay until the ban is abolished, after that he has to leave the country.
 - o On 30 March 2020 and until further notice, the border crossing point between Bulgaria and Greece "Zlatograd-Thermes" has been closed due to the spread of Covid-19 and a quarantine has been announced in the respective Greek border region.
 - o Special check-points have been established at all entries and exits of the town of Bansko and of all regional centres: Blagoevgrad, Burgas, Varna, Veliko Tarnovo, Vidin, Vratsa, Gabrovo, Dobrich, Kardzhali, Kyustendil, Lovech, Montana, Pazardzhik, Pernik, Pleven, Plovdiv, Razgrad, Ruse, Silistra, Sliven, Smolyan, Sofia, Stara Zagora, Targovishte, Haskovo, Shumen, Yambol.
 - o People can enter and exit these cities only to work, for medical reasons, care of their relatives, and to buy essential basic products and medicines.
 - o Truck drivers are allowed to pass through these check points but delays are possible.
 - o On 14 April, the Bulgarian Road Infrastructure Agency has published an interactive map of the green corridors for road transport of goods transiting the territory of the Republic of Bulgaria. The map contains useful information on rest areas and the respective number of parking slots, sanitary facilities, possibility to buy food, availability of internet connection, lighting, video surveillance, fuel station, nearest emergency services, number of slots for refuelling refrigerated trucks, etc.: <http://www.api.bg/index.php/en/green-corridors> or <https://www.bqtoll.bg/en>

Measures applying to drivers: Health equipment

Until 13 May, Bulgaria introduced a new obligation making the use of facial masks mandatory for all, including drivers, in open or closed public spaces.

Facilitation measures

- On 14 April, the Bulgarian Road Infrastructure Agency has issued an order temporarily suspending the official holidays driving ban and the summer weekly traffic ban for trucks over 12 tonnes until further notice.
- In addition, the Bulgarian Government has granted further temporary tolerance concerning the enforcement of driving and rest time rules for drivers under Reg. (EC) 561/2006 regarding the national and international transport of goods. **This exception applies until 31 May 2020.** Measures lifted are the following:
 - Art. 6.1: replacement of the maximum daily driving limit of 9 hours with one of 11 hours;
 - Art. 7: replacement of the minimum daily break requirements by imposing a break of 45 minutes after 5 and a half hours;
 - Art. 8(6): possibility to take two consecutive reduced weekly rest periods of minimum 24 hours, provided that
 - ✓ the drivers take at least 4 weekly rests within these 4 consecutive weeks and at least two of them should be regular weekly rests
 - ✓ the two reduced weekly rests should be compensated before the next rest period
 - Art. 8.8: possibility for the driver to take the regular weekly rest in the vehicle, as long as it has suitable sleeping facilities for each driver and the vehicle is stationary.
- On 7 May, the Bulgarian government put into force the following deconfinement measures:

The following special check-points, initially established at all entries and exits of the town of Bansko and of all regional centres, have been lifted: Blagoevgrad, Burgas, Varna, Veliko Tarnovo, Vidin, Vratsa, Gabrovo, Dobrich, Kardzhali, Kyustendil, Lovech, Montana, Pazardzhik, Pernik, Pleven, Plovdiv, Razgrad, Ruse, Silistra, Sliven, Smolyan, Sofia, Stara Zagora, Targovishte, Haskovo, Shumen, Yambol.

People and drivers can freely enter and exit these cities with no delays.

The use of a facial mask is already mandatory in closed public spaces. Nevertheless, people and drivers who are in open public places are required to comply with the requirement of social distancing and all anti-epidemic measures, and wear a protective mask in case there is a need to be in contact with others.

The border health authorities stopped issuing instruction notes to non-Bulgarian drivers entering Bulgaria; this will reduce waiting times at border crossing points.

The regime for non-Bulgarian drivers coming from a country with registered COVID-19 cases, is currently as follows:

 - Drivers of goods vehicles transporting goods destined for the Bulgarian market should enter the territory of the Republic of Bulgaria, unload the goods transported (and load goods for the return trip, if need be), and immediately leave the territory of the Republic of Bulgaria.
 - Transit through the Republic of Bulgaria is only permitted on routes determined by the Road Infrastructure Agency.
 - The deadline for leaving the territory of the Republic of Bulgaria cannot exceed 24 hours from entry into the country.

Measures apply immediately and until further notice.

Sources: AEBTRI and EC, DG MOVE

Canada

Updated on 17/04/20

- The Canadian Trucking Alliance (CTA) was informed on 15 April, by the Canadian Border Services Agency (CBSA), that the Public Health Agency of Canada (PHAC) is directing the agency, effective

immediately, to implement a policy requiring all essential workers crossing the border to wear a non-medical mask or face covering and to provide drivers with a mask should they not have one.

- CBSA informed CTA that no drivers will be turned away from entering Canada as a result of this policy and CBSA will be attempting to provide drivers with a mask, should they not have one.
- The direction from the PHAC also states all travellers arriving in Canada will be required to wear a non-medical mask or face covering to proceed to their final destination, where they will isolate or quarantine.

Source: Canadian Trucking Alliance (CTA)

China (People's Republic of)

Updated on 16/04/20

Restrictions at borders

Goods

- China has decided to temporarily suspend the entry into China by foreign nationals holding valid visas or residence permits due to the rapid global spread of COVID-19, according to an announcement by the Foreign Ministry and the National Immigration Administration on Thursday.
The suspension - starting on Saturday 28 March - is a temporary measure that China is compelled to take in light of the coronavirus (COVID-19) pandemic and the practices of other countries.
In addition, entry with diplomatic, service, courtesy or C visas will not be affected, and foreign nationals coming to China for necessary economic, trade, scientific or technological activities, or out of emergency humanitarian need, may apply for visas at Chinese Embassies or Consulates.
(Note: C visas are issued to air crew members, railway and maritime staff, and international road transport drivers. Therefore, international drivers will be exempted from the above policy).

Sources: the Foreign Ministry, the National Immigration Administration, China Daily

- Chinese authorities have urged strict measures to prevent the return of a domestic outbreak while controlling the import of new cases of coronavirus. The central government have urged local governments to perform their duties in preventing cases, imported or exported through land and waterway transport, and implement measures to suspend cross-border international road transport and enhance management on international waterway transport.
- The Ministry of Transport of the People's Republic of China published new rules on 11 April 2020 - *notification on further prevention and control of overseas epidemic importation and strengthening the closed management of international road freight drivers*. Specific requirements for foreign drivers are as follows:
 - In principle, **foreign freight vehicles entering the border should unload at the port**. Foreign drivers shall leave China on the same day, and shall not contact the management personnel of the freight terminal and the cargo handling personnel during the loading and unloading period.
 - Foreign drivers who are unable to leave China on the same day due to genuine difficulties will be subject to temperature check, and will be directly transferred from the port to a designated place under the supervision of the local authority responsible for the prevention and control of the epidemic. It will not be permitted to go out of the designated place before leaving China.



COVID-19 Outbreak Road Transport

iru.org/covid19



- During their stay in China, foreign drivers shall comply with the relevant provisions on the prevention and control of the epidemic situation at the place where the port is located, strengthen their own protection, take the initiative in health declaration, and promptly report any suspected symptoms such as fever, dry cough and fatigue.
- Foreign drivers who make multiple trips to and from cross-border transport shall be subject to regular testing (nucleic acid testing).
- Drivers who refuse to comply with the epidemic prevention and control regulations will be placed on a blacklist.

Sources: CRTA and the State Council of the People's Republic of China

Passenger

- o According to a notice published on 20 March by The State Council of The People's Republic of China, China will suspend cross-border road transportation for passengers and hold back inbound and outbound tourist services as part of a broader effort to curb the importation of novel coronavirus (COVID-19) cases from 20 March until further notice.

Sources: National Immigration Administration, Chinese Customs and <https://www.chinadaily.com.cn/a/202003/20/WS5e740aa9a31012821728095b.html>

- o On 30 March 2020, the Ministry of Transport of the People's Republic of China issued a notice on the prevention and control of imported coronavirus from overseas.
- o The following items are related to border crossing point (BCP) closures and operations of foreign trucks:
 - **For road BCPs.** Those closed passenger and cargo transport BCPs and passenger transport BCPs will continue to be closed for transport operations until further notice; the opening of international passenger transport at seasonal BCPs will be postponed.
 - **For truck drivers.** Foreign trucks will unload cargo at BCPs, and foreign truck drivers will return on the same day of arrival in China. Those foreign truck drivers who have difficulty returning will stay in accommodation designated by local disease prevention and control agencies.

Source: China Transportation News

- o With effect from 6 April, the passing of road freight through the Russian-Chinese border crossings points of Poltavka-Dongning and Turirog-Mishan is no longer permitted. The Pogranychy-Suifenhe border crossing point is closed for passenger transport, **however currently remains open for freight transport.** These measures have been put in place in order to ensure centralised inspections and/or quarantine in relation to the flow of goods and passengers through these ports.
- o With effect from 8 April, due to the rapidly increasing flow of passengers, the Manzhouli-Zabaikalsk border crossing point has been closed for passenger transport until further notice, as it has exceeded its capacities for inspection, quarantine and virus testing. **Freight transport will remain open for operations.**
- o On 14 April, the border crossing point of Irkeshtam, on the China-Kyrgyzstan border, has been reopened to freight transport. Goods entering both countries in foreign trucks have to be unloaded and loaded onto domestic vehicles driven by domestic drivers. Passenger transport remains banned.

Sources: Foreign Affairs Office of the People's Government of Heilongjiang Province; People's Daily; Irkeshtam Customs

Contact us:
information@iru.org

Colombia

Updated on 6/05/20

Restrictions on movements

- On 6 May, the Colombian Government extended the national quarantine until 25 May.
- The government has set up a Logistics and Transportation Centre to manage the transport of cargo and passengers by air, land, river, maritime and rail.
- Intercity transport is only used for access to or provision of health services and for people who require mobilisation and are authorised under the terms of Decree 457 of 22 March 2020. Urban transport operations (BRT) are allowed, but with an occupation rate of 35% per vehicle, to be used by people who can benefit from exemptions. Individual passenger transport (taxi) only works by telephone or through apps. Tourist transport and school transport services are suspended.
- Goods transport operations guarantee the services necessary to mitigate the spread of Covid-19 as well as the support to other industries that are allowed to operate by Decree 457 of 22 March 2020.

Source: CST

Croatia

Updated on 27/04/20

Restrictions on movements:

General information for travellers

- There is a compulsory 14-day quarantine or self-isolation measure in place for travellers arriving from specific countries (list available [here](#); Italian citizens included).
- The following are exempt from the implementation of this measure:
 - Healthcare professionals, healthcare researchers and collaborators, experts in care for the elderly, and persons requiring urgent medical treatment;
 - Cross-border workers;
 - **Goods carriers and other transport personnel, to the extent necessary;**
 - Diplomats, police officers while carrying out their duties, civil defence services and teams, international organisation staff and international military personnel while carrying out their duties;
 - Passengers in transit.

The above mentioned exempt persons will be subject to the instructions and measures adopted by the CIIPH.

End date: not available

Further information [here](#) and [here](#).

Commercial road transport

- According to the latest exchange (20 April) with the Croatian authorities, the current situation is the following:

- There are no limitations to transit at the border crossings when using green lanes, as defined by the European Commission communication (see Annex 1 and the green lanes map). Green lanes are open for both transit and the unloading of trucks in Croatia;
 - With regards to the paper documents, Croatia is following the European Commission communication on the implementation of green lanes in order to demonstrate their flexibility;
 - There is no convoy for goods delivered inside Croatia, and on 18 April, the Croatian Government took the decision to abolish the convoy method for transit operations in Croatia.
- o The contact point for the relevant Croatian authority is uprava.infrastruktura@mmpi.hr.
 - o **Vehicles in transit through Croatia will use the following border crossing points:**
 - Croatia – Slovenia border: Bregana and Macelj
 - Croatia – Hungary border: Goričan and Duboševica
 - Croatia – Bosnia and Herzegovina border: Nova Sela, Stara Gradiška and Slavonski Šamac
 - Croatia – Serbia border: Bajakovo
 - o Transport services in transit through the territory of the Republic of Croatia shall be carried out using motorways. Routes of movement, stopping points and fuel points will be determined by police authorities. Drivers of goods vehicles shall adhere to the instructions from police officers and civil defence members. When stopping, drivers shall observe strict distancing measures and shall avoid close personal contacts (2 meters indoors and 1 meter outdoors).

Measures applicable to drivers: Quarantine measures

- o Following loading or unloading of goods, resident drivers should adhere to self-isolation measures. However, they can start a new transport activities and interrupt the quarantine period at any time. Drivers who show symptoms should contact their family doctor straight away and ask for further instructions. In case the driver cannot spend the self-isolation period at home, the employer should provide him with dedicated premises, subject to approval by the local civil defence authority.
- o In case the self-isolation period is shorter than 24 hours, the driver shall take the daily rest in the cabin and within the employer's parking area. If, for objective reasons, the drivers of goods vehicles in international transport are not able to stay in home isolation or in quarantine/isolation premises provided by their employer, they may use in the quarantine/self-isolation premises provided by county civil defence authorities.
- o Non-resident drivers are not subject to health monitoring measures in case they leave Croatia immediately after unloading. In case their permanence in Croatia is longer than 24 hours, they should make use of self-isolation premises provided by competent authorities.

Sources: Ministry of Foreign Affairs of the Republic of Croatia, European Commission website and ITF

Czech Republic

Updated on 29/04/20

Restrictions on movements

- o The Government has announced a "state of emergency" with a set of bans and limitations, including:
 - Foreigners coming from high risk countries (unless permanent residents) are temporarily banned to enter in the national territory. High risk countries are: Italy, France, Spain, Germany, Switzerland, Norway, Denmark, the Netherlands, Sweden, UK, Belgium, Austria, China and South Korea,



- Prohibition for Czech citizens and foreign permanent residents to travel to high risk countries,
 - The international transport of passengers by bus is stopped from 00:00 of 14 March
 - International freight transport is exempt of the restriction. However, only major border crossings with Austria (Dolní Dvořiště, České Velenice, Hatě Mikulov) and Germany (Strážný, Pomezí n.O., Rozvadov, Folmava, Žel. Ruda, Krásný Les, H.Sv. Šebestiána) will remain open.
- o The Government of the Czech Republic decided to prolong the "state of emergency" until **17 May 2020**.

Facilitation measures

- o The Ministry of Transport, Czech Republic, has granted a general exemption from the driving restrictions on Sundays and public holidays on motorways and class I roads in the Czech Republic for trucks and combination vehicles with an MPW of over 7.5 tons and trucks and special vehicles with trailers, if an MPW of the motor vehicle exceeds 3.5 tons.
The exemption is valid from **15:00 on 13 March 2020** for the time the state of emergency is in force, but not longer than one year.
- o However, note that from 19 March 2020 for a period of 60 days, the border sections of the D1, D2, D5, D8 and D11 motorways are affected by the following restriction:
In the direction of the border crossing points, lorries over 3.5 tonnes are prohibited from overtaking. Exceptions to this prohibition are vehicles used in:
- The carriage of perishable goods, at least half the volume of the cargo space of a vehicle or combination of vehicles.
 - The transport of live animals.
 - Carriage of fuel intended for petrol stations.
 - Carriage of postal items.
 - The transport of medical and biological material, medicines and material for their manufacture.

The reason for this restriction is to reduce queues at border crossing points and give preference to essential transport.

The restriction applies to the following sections of road:

- Highway D1 from km 366,300 to the right (direction of state border).
 - Highway D2 from km 35,000 to the right (direction of the state border).
 - Highway D5 from km 136,300 to the right (direction of parking).
 - D8 motorway from km 86,900 to the right (direction of the state border) and from the state border to km 88,200 to the left (direction Prague, due to checks by the Czech Republic police).
- o On 22 March, a critical situation was reported on the CZ/SK borders due to drivers taking the 45 min. rest in the right lane blocking the access to the border crossing. Drivers are asked to take the rest elsewhere or to postpone it.
- o On 23 March, the Czech Ministry of Transport published a comprehensive overview of the measures taken in the field of transport. The table can be consulted here.
- o The Czech government granted relaxations on driving and rest times rules. Relaxations apply from **15 April until 31 May** to all drivers involved in national and international transport of goods being performed within Czech territory and are as follows:
- Art. 6.1: increase of the maximum daily driving limit from 9 hours to 11 hours
 - Art. 6.2: increase of the maximum weekly driving limit from 56 hours to 60 hours
 - Art. 6.3: increase of the fortnightly driving limit from 90 hours to 100 hours

- Art. 8.1: reduction of the daily rest requirement from 11 hours to 9 hours
 - Art. 8.6: postponement of a weekly rest period beyond six-24 hours period
 - Art. 8.8: possibility for the driver to take the regular weekly rest in the vehicle, provided that the vehicle is stationary and it has suitable sleeping facilities.
- o On 29 April, the Czech government has prolonged the state of emergency until 17 May 2020. Exemptions from driving restrictions have been extended accordingly.

Sources: CESMAD BOHEMIA and Czech Police

Denmark

Updated on 23/04/20

Restrictions on movements

- o Restrictions at the Danish border have been extended **until 11 May**. Following the Easter weekend, nurseries and schools began to open and a limited number of professions have also resumed activity. The current limits on group gathering will also be progressively relaxed: from 10 May onwards, the current limit of 10 people will be raised to 500 until 1 September 2020.
- o Transport of goods will still be possible. All channels of freight transport by road, sea, rail and rail will be kept open without any other control than the normal customs/passport controls on random basis. However, international freight transport (including transit) by road should be operated through the following border crossing points: Frøslev, Sæd or Kruså. Please note that Kruså border crossing point is not accessible for vehicles above 3.5 tonnes. It is recommended for trucks to use Frøslev (E45) border crossing point. Border crossing at Padborg, as well as other smaller border crossing are closed. Freight operations can also be operated through the "blue border" (Øresundbridge and ferries).

Facilitation measures

- o The leading Danish transport and logistics associations have prepared a list of recommendations for the receipt and shipping of freight. The document contains recommendations for transport companies, professional drivers, consignors and consignees and is available in English, German and Polish and Romanian.

Extension of driver licences and certificates

- o An order has been issued extending the validity of a number of driver licences and certificates in the transport sector. The ban on exchanging drivers between companies has also been temporarily lifted. These measures have been put in place to prevent driver shortages. The validity of the following categories of licences and certificates that expire in the period between 1 March and 30 April 2020 will be extended to 31 August 2020:
 - Licence types: C1, C1/E, C, C/E, D1, D1/E, D and D/E.
 - Driver training certificates issued pursuant to the Executive Order on Qualification Requirements for Certain Drivers of Vehicles in Road Transport.
 - Driver training certificates for the carriage of dangerous goods by road issued pursuant to the Order on the Carriage of Dangerous Goods.
 - Security Advisor Certificate issued pursuant to Executive Order on Security Advisors for the Transport of Dangerous Goods.

- Concerning ADR certificates for drivers, Denmark has signed the M324 multilateral agreement: driver training certificates expiring between 1 March and 1 November 2020 will remain valid until 30 November 2020.
- STA-licenses (drivers of pilot cars for exceptional transport) that expire between 1 March and 30 April 2020 will have their validity extended until 31 August 2020. This will only apply to transport within the Danish borders.
- Drivers who carry out international road transport and have an expired driver's certificate are advised by the Danish Road Authority to bring the certificate for international transport workers (Annex III from the Green Lane Guidelines). More information on the Danish Road Authority site can be found here.

Sources: ITD, DTL and DI Transport

Egypt

Updated on 7/04/20

- No restriction on type of goods for import and transit. The only restriction is on exporting medical supplies that are necessary for treatment of the virus, such as masks and oxygen machines.
- Regarding movements from Safaga Port in Egypt to Dhiba Port in KSA, the Saudi Ports Authority are not allowing drivers from Egypt to land in the Saudi Ports, only Saudi trucks with resident drivers are allowed to pick up the load in coordination with local importers.
- The Ministry of Transport of Sudan has instructed the complete closure of أشكيت معبر (Achkit) border crossing with Egypt, except for Sudanese exports transported on Egyptian trucks. Decision dated 31 March 2020.

Source: Egyptian customs authorities

Estonia

Updated on 18/03/20

Restrictions at borders

- The government has decided to restrict the crossing of the Schengen internal and external border temporarily, and to reintroduce border controls in order to contain the spread of the Coronavirus (COVID-19).
- Only citizens of Estonia and holders of Estonian residency permits (or rights of residence) can enter Estonia, as well as foreign citizens with family members living in the country. **International road freight is exempt.**
- Foreigners are allowed to transit Estonia if travelling to their home country as long as they are not showing symptoms of COVID-19.
- At the border control, travel documents and medical symptoms will be checked.

- There are no restrictions for exiting the country.
- The border control was reintroduced on 17 March 2020. The temporary restriction of border crossing will be in force until further notice, and the situation will be reviewed every two weeks.

Source: ERAA

Finland

Updated on 08/05/20

Restrictions at borders

- The Finnish Government decided to prolong border control at internal borders and restrict cross-border traffic until **14 June 2020**.
- On **4 May**, the Finnish Government announced the lifting of restrictions currently in force on cross-border traffic across Schengen internal borders from **14 May**. The measure will allow employment or commission-related commuting and other essential traffic. Holiday and recreational travel abroad is still not recommended. The Finnish Border Guard drafted specific guidelines on the gradual opening of border traffic.
- Controls aim at further reducing movement at the main commuting border crossing points with Sweden, Norway and Estonia; only work travel that is strictly necessary will be permitted, and employees must carry an employer's certificate stating that the work is essential.
- Maritime passenger transport is prohibited: companies operating from Sweden, Estonia and Germany to Finland are requested to suspend the sale of tickets for ships departing on or after 11 April 2020. The provision **does not apply to goods and freight transport operations**.
- Regarding the Åland Islands, air passenger transport is permitted only on scheduled flights from Stockholm, Helsinki and Turku to Mariehamn. Passengers travelling from Åland with the destination of mainland Finland are also permitted to travel.
- People entering Finland are obliged to remain under quarantine-like conditions for 14 days. Such requirements **do not apply** to essential border crossings of emergency medical services and rescue service personnel or to **freight transport**.
- Regarding traffic between Finland and non-Schengen countries (i.e. Russia), Finnish Border Guard officials **allow** the entry/exit of the following:
 - Licence types: C1, C1/E, C, C/E, D1, D1/E, D and D/E.
 - Return to Finland: Finnish nationals and their family members; nationals of other EU and Schengen countries and their family members who are residing in Finland; third country nationals residing in Finland with residence permit.
 - Returning transit traffic to other EU or Schengen countries or via them: nationals of EU and Schengen countries and their family members, third country nationals residing in another EU or Schengen country with residence permit.
 - Exit of third country nationals.
 - Necessary traffic, which is:

- ✓ Healthcare and rescue service professionals/personnel, health researchers, and elderly care professionals.
- ✓ Transport personnel and other transport staff to the extent necessary. Companies should be aware that, despite additional controls the borders remain open and functional; previous restrictions are still in place
- ✓ Diplomats, staff of international organisations, military personnel and humanitarian aid workers carrying out their work.
- ✓ Necessary transit and return trips.
- ✓ Passengers travelling for imperative family reasons.
- ✓ Persons in need of international protection or for other humanitarian reasons.
- ✓ Other necessary and justified traffic (e.g. maintenance works that require a specific maintenance team or person arriving from another country and whose work cannot be postponed).

Detailed information relating to the travel conditions are available [here](#).

- On 15 April, the Finnish Government lifted the temporary restrictions on movement to and from the Uusimaa region which were enforced on 28 March. This will enter into force immediately following the Government's plenary session, which is scheduled for 13:00 local time.
- All other measures, including those on external borders, social distancing, restaurants and schools, etc. remain applicable.
- On 23 April, the Finnish government extended the ban of large gatherings of more than 500 people until 31 July 2020, at least.

Facilitation measures

- On 23 April, the Finnish government set out temporary relaxations on driving and rest time rules based on the EU Regulation 561/2006, which apply from 26 April until 31 May and are as follows:
 - Maximum daily driving time of 11 hours
 - Maximum weekly driving time of 60 hours
 - Maximum fortnightly driving time of 120 hours
 - Minimum daily rest period of 9 hours
 - Minimum weekly rest period of 24 hours, every other week, without compensation
 - 45 minutes rest period every 5,5 hours of driving time, which may be split into a 30 minutes before and 15 minutes after
 - Regular weekly rest in the cabin allowed, as long as the vehicle is stationary and it has suitable sleeping facilities
- On 2 April, the Finnish Government issued a decree with the aim to ensure continuity of dangerous goods transport operations. Current exceptional circumstances may make it impossible to provide training and tests related to professional qualifications in the transport of dangerous goods, or scheduled and interim inspections of tanks, or vehicle inspections for the carriage of dangerous goods. Therefore, the validity of licences, approvals and certificates which will expire in the near future can, on an exceptional basis, be further extended in 2020.
- On 16 April, the Finnish Government issued new decrees that bring into force special agreements on the transport of dangerous goods. The decrees enter into force on 17 April. With the special agreements (M326, M327 and RID 4/2020), the periodic inspections of pressure receptacles, UN tanks and UN-MEG containers, that would expire during the coronavirus situation, will exceptionally remain in force with special arrangements in Finland and other signatory countries of the agreement. The special agreements may be applied to transport by road and rail that are mostly used for the carriage of dangerous goods. The agreements will be available on the website of the Transport and Communications Agency - Traficom. The Agency will provide information in Finnish and Swedish.

For additional information, members can consult the following webpages: [UNECE](#) and [OTIF](#).

Sources: FinMobility, SKAL and Ministry of Transport and Communications

France

Updated on 24/04/20

Restrictions on movements

- As from 17 March, 12:00, new measures have entered into force to limit activities and public gatherings in order to limit the effect of the coronavirus (COVID-19) pandemic. A national lockdown has been declared. People are allowed out only in cases of emergencies, to buy food or for work. Freight transport is exempt from the movement restrictions.
- On 7 April, the French Ministry of Interior published one additional certificate with three variations (to be used according to which type of travel is done) that must be used by people to justify their international movements. The three variations of the certificate cover the following cases and can be downloaded [here](#):
 - Exit of third country nationals.
 - Travel from mainland France to French overseas territories
 - Travel from abroad to mainland France
 - Travel from abroad to French overseas territory
- Note that the French authorities are allowing non-French professional drivers and French drivers operating international transport to use the form provided by Annex 3 of the EC communication on green lanes - [Template of Certificate for International Transport Workers](#) – to enter France. These measures are however not applicable for national transport.
- Only the Schengen area borders are being closed for the next 30 days (external borders of the European Union).
- On 20 March 2020, the French Government published a number of additional requirements for passenger transport by bus, coach and taxi, and road freight transport:
 - Bus and coach*
 - Vehicles must be disinfected once per day.
 - The front door of multi-door vehicles can no longer be used by passengers, unless the driver is completely protected by a transparent barrier.
 - The social distancing rules must be displayed on the vehicle.
 - Tickets are no longer sold on board.
 - Taxi*
 - Passengers can no longer sit next to the driver.
 - The driver can refuse passengers with visible symptoms of the COVID-19 virus.
 - Road freight transport (conditions are applicable to drivers and staff at loading and unloading points)*
 - Social distancing rules must be observed.
 - Where there is no access to water, disinfectant gel must be made available.
 - No personal contact is allowed when signing contracts.
 - Goods can only be delivered at the place indicated on the transport document.
 - Home delivery is only possible by leaving the goods at the door. No physical contact with the customer is permitted.

- Delays for complaints about the delivery have been set.
- o FNTR and other French transport associations published guidelines on best practices that workers of goods transport and logistics companies must follow to ensure the continuation of activities whilst preventing the spread of Covid-19 virus. Guidelines can be downloaded and consulted [here](#).

Facilitation measures

- o Following considerable disruption on the road encountered by road freight transport and logistics operators following the announcement of the lockdown, the French Government has issued new measures to facilitate freight transport.
- o These include guarantees for access for freight transport and logistics workers to their workplace and to loading and unloading places, extra protection for freight transport and logistics workers and a derogation to keep stores, restaurants and sanitary facilities open at service stations.
- o The text of the announcement can be found [here](#). On 23 April, APRR provided updates and details on the activities of some rest areas in France that are open to truck drivers. Details can be found [here](#) and [here](#). A map showing restaurants that are open is also available [online](#). On 25 March, AFTRI has shared a [communication](#) and a [map](#) on the situation of some service and rest areas in Brittany and Pays de la Loire.
- o According to a [decree published on 20 March](#) and an official e-mail answer seen by the IRU and following the confirmation by IRU's Member Associations in France, FNTR and AFTRI, we inform that a crew of two drivers in the cabin is allowed in France (but not a crew of three), as long as the minimum distance of 1 meter is respected.
- o The French Government have published a document lifting some of the driving bans for goods vehicles heavier than 7.5 tonnes, on the following days:
 - on 3, 7, 8, 9 and 10 May, for **vehicles delivering parcels by post** - text [here](#);
 - from 20 to 21 May (public holiday 'Ascension') and 30 May 22:00 to 1 June midnight (public holiday 'Pentecost'), for **vehicles carrying out removals** - text [here](#);
 - from 7 to 8 May and 20 to 21 May, for **vehicles transporting food (human or animal), hygiene or medical products (or any product needed for their development) and construction materials (the equipment required for any general public works or the construction of public buildings)** - text [here](#).

Sources: AFTRI and FNTR

Germany

Updated on 7/05/20

Restrictions on movements

- o As of 16 March, 08:00, Germany has been re-introducing temporary border controls at the borders with Austria, Switzerland, France, Luxemburg and Denmark. Access at these borders must be performed via dedicated border crossings. For a full list of these border crossings please refer to this [link](#). On 4 May, the Federal Minister of the Interior has decided to extend border controls **until 15 May**.
- o The following groups of persons may continue to enter German territory via the borders with Austria, Switzerland, France, Luxemburg and Denmark:

Contact us:
information@iru.org

- persons with German nationality.
 - persons with a German residence permit.
 - persons with residence in Germany.
 - professional commuters, regardless of their nationality - proof of commuting status should be carried (template for a commuter certificate [here](#)). Seasonal workers, EU parliamentarians and accredited diplomats may also enter the country.
 - persons who have urgent reasons for entry - proof of urgent reasons should be carried. The Federal Police make individual decisions at their discretion.
- o Cross border movement of goods remains guaranteed. BGL is not aware of any cases where cross border goods transports have been refused entry into Germany via the above mentioned borders.
- o The following groups of persons will be refused entry onto German territory via the borders with Austria, Switzerland, France, Luxemburg and Denmark:
- persons who do not belong to any of the above mentioned groups allowed to enter German territory.
 - persons who show symptoms of illness - in these cases, the competent health authority will be consulted immediately.
- More information is available [here](#) and [here](#).
- o *Situation in rest and service areas on German motorways:*
- In rest and service areas operated by the TANK & RAST group, use of the SANIFAIR sanitary facilities free of charge since 17 March, with the objective of ensuring drivers' access to crucial hand hygiene. Free access to the SANIFAIR sanitary facilities is granted via the "children's entry" and will be explicitly signposted. TANK & RAST group is operating 330 of the rest and service areas on German motorways and drivers should look for the TANK & RAST symbol.
 - TANK & RAST have also announced that they will keep open not only the petrol stations but also the attached shops (bakery products, snacks, retail) at all rest and service areas operated by them. They also inform that they extended their range of warm takeaway food in order to best suit the drivers' needs.
 - In case of any problems with the TANK & RAST service, drivers are invited to call a special, free of charge hotline: 0800 9 555 777 (available from the German networks) or by sending an email to kundenservice@tank.rast.de
 - BGL is in contact with all remaining providers of motorway rest and service areas to ensure ongoing services and access to sanitary facilities with suitable opening times for all German rest and service areas on motorways. This subject is also being discussed with the Ministry of Transport on the highest political level.
- o On 8 April, the German Federal Ministry of Health issued a regulation banning travellers from entering Germany without a valid reason. The following content replaces the Orders issued by the same Ministry of 2 April.
- People entering Germany must proceed directly to their home or to a suitable accommodation and isolate themselves for a period of 14 days after the entry into the country. They are also required to contact their competent public health office without delay and inform them of their entry into the country. People must provide the local health authority with the following information: identity and date of birth, travel itinerary, contact data, address of the domicile.
- Derogations to this rule may be applied by regulations issued by federal states and only concern people that show no symptoms of COVID-19 infection.
- Bus companies and tour operators doing cross-border transport to Germany must comply, within the framework of their operational and technical capabilities, with the following provisions:
- Provide travellers with a barrier-free version of the information on the risks posed by COVID-19 infection and the possibilities for preventing and combating it.

Keep the data available for up to 30 days after arrival in Germany. This applies in particular to electronically stored data which enable passengers to be identified and located, as well as to passenger lists and seating plans.

- There are no restrictions on the cross-border movement of goods, regardless of the nationality of the drivers.

Measures applying to drivers: Health equipment

- All German Federal States have introduced legislation making the use of facial masks mandatory in order to prevent further spreading of the COVID-19 virus. However, due to the federal structure of Germany, there is no unique nationwide provision defining the exact circumstances in which a mask must be worn. Therefore, to ensure that legal requirements are definitively fulfilled, BGL recommends that drivers wear a facial mask whenever leaving the vehicle's cabin.

Facilitation measures

- German control authority BAG is publishing a list of German COVID-19 derogations concerning road transport under [BAG link](#). On this page, please click the link called "Straßengüterverkehrsrechtliche Ausnahmen aufgrund Covid-19" in order to open the PDF list's most up-to-date version. Most relevant content:

- Germany decided, at Federal level, on a **temporary relaxation of driving and rest times rules** based on Article 14.2 of the EU Regulation 561/2006. The German Federal Administration has temporarily relaxed driving and rest times rules with a prolongation **until 31 May**. The measure applies to road transport of goods of daily necessities, including food, medical equipment and fuel.

Measures lifted are as follows:

- Possibility to extend driving time to 10 hours five times per week
- Possibility to take two consecutive reduced weekly rests within a period of four weeks

These measures apply to professional and privately owned transportation companies. For details, please use the [above BAG link](#). Click the link called "Straßengüterverkehrsrechtliche Ausnahmen aufgrund Covid-19" and consult the resulting PDF document's section 1 called "Fahrpersonalrecht".

- The Federal Government of Germany has asked the Länder to suspend the **weekend and holiday traffic bans of truck movements** to ease the situation during the crisis. The German control authority BAG is providing an up-to-date overview of the situation in the different regions under [the above BAG link](#). Click the link called "Straßengüterverkehrsrechtliche Ausnahmen aufgrund Covid-19" and consult the resulting PDF document's section 4. "Straßenverkehrsrecht – Sonn- und Feiertagsfahrverbote". Following requests for clarification on the suspension of weekend and holidays traffic bans in Germany, BGL has confirmed that dates of expiration should be read as "**until and including**", therefore, the date mentioned on the document is the last day when operators can take advantage of the suspension.

Sources: BGL (from [Federal Government](#)), German Minister of Internal Affairs, BAG, DSLV, and EC (DG MOVE)

Georgia

Updated on 27/04/20

Measures on international freight transport

Foreign truck drivers transporting cargo on the territory of Georgia are subject to the following conditions:



COVID-19 Outbreak Road Transport

iru.org/covid19



- After completing the procedures at the customs checkpoint, the driver shall proceed immediately (non-stop) to the point of destination. Stops are allowed only at specially designated areas called **STOP POINTS**. At certain STOP POINTS drivers can purchase the compulsory civil liability insurance (<https://www.tpl.ge/en/salespoints>). Other STOP POINTS can be found in the parking areas located near customs checkpoints (see below for details);
- At a STOP POINT, the driver has the right to park his vehicle, refuel, purchase a road usage card, use the sanitary facilities, and purchase items/food for personal use;
- In case of problems (vehicle malfunction, illness, etc.), the driver should contact the relevant services and stay in the truck cabin until help arrives. In these situations, drivers should call 112 - the Emergency and Operative Response Center of the Ministry of Internal Affairs of Georgia;
- The truck must leave the territory of Georgia:
 - In case of transit (except for moving from or to the customs checkpoint Kazbegi and exit by ferry) - within **24 hours** of entering the country;
 - In case of driving (except exit by ferry) from or to the customs checkpoint Kazbegi - within **48 hours** of entering the country.
 - In case of exit by ferry when transiting the country – within 7 (seven) calendar days of entering the country;
 - In other cases, within **48 hours** of entering the country. However, in cases where a cargo vehicle, after importing and unloading goods in Georgia is loaded with goods intended for export from Georgia, or if the entry and/or exit of trucks from Georgia is carried out using ferry transport – within 7 (seven) calendar days of entering the country.
- It is strongly recommended to only make non-cash payments (online payments, credit/debit cards, etc.) and to use personal protective equipment (medical masks, gloves, etc.).
- **The following places are designated STOP POINTS for specific areas:**
 - Urbnisi - Kareli Region, village Urbnisi, cadastral code: 68.16.45.054;
 - Terjola - Terjola Region, village Siktarva, cadastral code: 33.08.38.224;
 - Gori - Gori Region, village Tiniskhidi, cadastral code: 66.44.02.033;
 - Zestaponi - Zestaponi Region, village Argveta, cadastral code: 32.03.34.211.

Note:

- The time periods required for carrying out the customs formalities and stopping at the parking areas (separately, semitrailers or trailers) located in the vicinity of the Georgian State Customs Border, Customs Checkpoint shall not be counted.
- For violating the above-mentioned rules (except for non-compliance with the recommendations, or when weather conditions or other external factors complicate and/or make it impossible to fulfill the established conditions), the driver of the vehicle will be fined 3,000 GEL. However, if the violation concerns the time limit of the transport operation, the vehicle must leave the territory of Georgia immediately, otherwise the driver will be placed on a 14-day quarantine and the vehicle will be impounded.

Source: Ministry of Foreign Affairs of Georgia

Greece

Updated on 20/04/20

Restrictions on movements

Contact us:
information@iru.org

- On 22 March 2020, the Greek Prime Minister announced that Greece will impose a national lockdown as of 23 March 2020.

Passenger Transport:

- The movement of Greek citizens is heavily restricted within Greek territory. Special written permission is required under certain circumstances. For people going to/from their place of work, an attestation form from their employer is required (in Greek and English).
- Foreign citizens are not allowed to enter Greece.
- Greek citizens returning to Greece from abroad must self-isolate at home for 14 days.
- Most international flights to/from Greek airports have been temporarily cancelled.

Goods Transport:

- All borders are open for international transport operations.
- In some cases a Locator Form may be required by port authorities when entering Greece. Truck drivers will be given the form and asked to complete and sign it. The form requires personal and family contact details (attached in English).
- Drivers must present an attestation form from their employer, as well as passport/ID, and the CMR, in order to prove transport activity while on Greek territory.
- At the Customs office of Evzoni (BCP Greece-North Macedonia) truck movement restrictions are enforced every day from 22:00-06:00. Trucks carrying ethyl alcohol, perishable goods and medical supplies are exempt from the provision.
- On 2 April, the Greek government published a new Ministerial Decree on the quarantine routine that people entering Greece from abroad must follow. Art. 2 of the decree sets out specific provisions for truck drivers, as follows:
Workers of all nationalities engaged in international transport operations (land, air or maritime) must, upon entering Greece and without any delay, either transit through the country or reach their final destination within the country. After having reached the final destination in Greece, drivers must commence a temporary isolation period of 14 days. Trucks drivers travelling from Italy to Greece by ship are requested to fill in the following form.

Exemptions to this rule apply in the following cases:

- When there is a need to start a new international transport operation (e.g. bilateral transport). In this case, mandatory quarantine can be lifted at any time, even the day after it began;
- When there is a need to make a national transport operation (within Greek territory). In this case, the driver must spend at least 7 days in isolation, starting from the day he entered the country. Because of the mandatory week spent in isolation, cabotage operations will not be possible.

The measure now applies from 2 April to 15 May, with a fine of EUR 5,000 to be imposed in the case of any violations.

Facilitation measures

- Regulations on driving and rest times have been temporarily relaxed in Greece. This relaxation is granted pursuant to Article 14(1) of Regulation (EC) No 561/2006. This temporary relaxation applies from 18 April and will run until 31 May. It will apply to all drivers, irrespective of their nationality, when operating on the territory of the Greece:
 - Art. 6.1: replacement of the maximum daily driving limit of 9 hours to 11 hours;
 - Art. 6.2: replacement of the maximum weekly driving limit of 56 hours to 58 hours;
 - Art. 6.3: replacement of the maximum fortnightly driving limit of 90 hours to 96 hours;

- Art. 7: replacement of the minimum daily breaks requirements by imposing a break of 45 minutes after 5 and a half hours;
 - Art. 8.1: reduction of the daily rest requirements from 11 to 9 hours;
 - Art. 8.6: postponement of a weekly rest period from six to seven 24-hour period or reduction of the regular weekly rest period from 45 hours to 24 hours;
 - Art. 8.8: possibility for the driver to take the regular weekly rest in the vehicle, as long as it has suitable sleeping facilities for each driver and the vehicle is stationary.
- o The same derogations apply to international transport operations in Greece, that are conducted under the provisions of AETR (1970).

Source: OFAE

Hungary

Updated on 20/04/20

Restrictions on movements

- o With effect from midnight, 17 March, Hungary has closed its internal and external borders from passenger traffic. Hungarian citizens and EEA citizens (entitled to permanent residence and proving this right with a permanent residence card) will still be allowed to enter the country.
- o According to the government decree nr 81/2020, article 3 (7), provisions of articles 2 and 3 of this government decree, **these restrictions do not apply to freight traffic**. Goods transports arriving and departing from Hungarian destinations, as well as those in transit, are allowed to cross the state border and continue their journey without restrictions, **but only through the designated border points** (transit routes are highlighted in blue): here.
 - Stops are only permitted at designated rest areas and fuel stations.
 - Transport operators must have police stamps/stickers (stickers are given by the police at the border crossing points) attached to the windscreen.
 - Only the driver is permitted in the cabin; no passengers (no double-manning).
 - Drivers should cross the territory as quickly and efficiently as possible, without violation of any traffic rules - police procedures are in place at the points of exit.

Official webpage of the Government here.

MKFE is providing all information related to the coronavirus (COVID-19) relevant to foreign hauliers on an up-to-date webpage in English.

Facilitation measures

- o According to the European Commission, Hungary granted relaxations on driving and rest times rules. Relaxations apply until 31 May to all drivers involved in national and international transport of goods being performed within Hungary. Provisions from EU Regulation 561/2006 derogated from:
 - Art. 6(1): replacement of the maximum daily driving limit of 9 hours with one of 11 hours;
 - Art. 6(2): replacement of the maximum weekly driving limit of 56 hours with one of 60 hours;
 - Art. 6(3): replacement of the maximum fortnightly driving limit of 90 hours with one of 105 hours;
 - Art. 7: replacement of the minimum daily breaks requirements by imposing a break of 45 minutes after 5 and a half hours;
 - Art. 8(2): Reduction of the daily rest requirements from 11 to 9 hours;
 - Art. 8(6): reduction of the regular weekly rest period from 45 hours to 24 hours, provided that the reduction shall be compensated by an equivalent period of rest taken en bloc before the end of the third week following the week in question OR

- Art. 8(6): postponement of a weekly rest period from six to seven 24-hour period.
- o Driving restrictions for goods transport: General exemption was granted from the driving restrictions in Hungary for trucks and combination vehicles with a MPW of over 7.5 t. The exemption is valid until revoked.
- o **Requesting route licences for the transport of heavy vehicles with overweight and oversize:** the UVR Eoffice system is available in English for requesting route licences for the transport of heavy vehicles with overweight and oversize from 16/04/2020. The English version of UVR Eoffice system allows the administration and completion of the application in English, facilitating the usability of the system. The documents, the route licences and the invoices are still issued and printed in Hungarian in accordance with the relevant regulations. The instructions for the basic use of the system have also been translated and the new customers of UVR Eoffice system will also receive them in a separate email upon registration.
Availability of the electronic administration UVR Eoffice: [here](#).

Sources: MKFE and European Commission

India

Updated on 2/05/20

Restrictions on movements

- o On 1 May, the Government of India issued an order extending the lockdown for a further period of **two weeks with effect from 4 May**.
The lockdown extension measure includes the creation of Red, Orange and Green Zones; each of them has dedicated guidelines that can be read [here](#).

Passenger Transport:

- o The movement of Indian citizens is heavily restricted within India. Special written permission is required under certain circumstances.
- o All domestic flights have been suspended.
- o All incoming passenger traffic, at all 107 Immigration Check Posts which includes all Airport ICPs, all Seaport ICPs, all Land Port ICPs, all Rail Port ICPs and all River Port ICPs will remain suspended.

Goods Transport:

- o All transport services – air, rail, road – will remain suspended.
- o The Indian Ministry of Home Affairs has issued new guidelines which apply from 15 April. Bus passenger transport remains suspended, as does taxi transport (including auto rickshaws and cycle rickshaws) and the services of taxi aggregators (i.e. taxi apps). Road transport of goods is still permitted. Full guidelines can be read [here](#).

Facilitation measures

- o Transportation for essential goods only
- o Fire, police and emergency services

Source: FICCI

Iran

Updated on 8/04/20

Restrictions at borders

- The situation at Iran's border crossing points is as follows:
 - **Iraq - Iran border crossing points in the Kurdish territory of Parvizkhan - Parvizkhan, Bashmakh - Bashmaq and Tamarchin - Haj Omran:**
Iranian export fleet, admission of national fleet from both sides of the border, as well as border transshipment are authorised. However, third party fleet border crossing and Iraqi export fleet border crossing is prohibited by the neighbouring country. While admission of Iranian and Iraqi nationals is authorised, departure of Iranian and Iraqi citizens as well as transit of third party citizens is prohibited by the neighbouring country.
 - **Iraq - Iran border crossings in main territory of Chazabeh - Sheib, Shalamcheh - Shalamjeh, Mehran – Zorbatieh:**
Commercial fleet, except admission of national fleet, is prohibited by the neighbouring country. While admission of Iranian and Iraqi nationals is authorised, departure of Iranian and Iraqi citizens as well as transit of third party citizens is prohibited by the neighbouring country.
 - **Pakistan - Iran border crossing of Taftan - Mirjaveh:**
Commercial as well as passenger fleet, including admission of national fleet, is prohibited by the neighbouring country.
 - **Turkmenistan - Iran border crossing of Sarakhs - Sarakhs, Artiq - Lotfabad and Inchehboroun – GuderOlum:**
Commercial fleet, except admission of national fleet, is prohibited by the neighbouring country. The neighbouring country has prohibited entry of passenger traffic. In Bajgiran - Gudan, commercial as well as passenger fleet, including admission of national fleet, is prohibited by the neighbouring country.
 - **Turkey - Iran border crossings:**
In Kapikoi - Razi BCP, commercial transport is already banned, while admission of Iranian and Turkish nationals is authorised, the departure of Iranian and Turkish citizens as well as transit of third party citizens is prohibited by the neighbouring country.
In Esendere - Sero and Gurbulak - Bazargan BCPs, while admission of Iranian and Turkish nationals is authorised, commercial fleet, except entry of national fleet, is prohibited by the neighbouring country.
 - **Afghanistan - Iran border crossings:**
In Islam Qala - Dogharoun BCP, commercial fleet is permitted.
In Farah - Mahirood and Zaranj - Milak, commercial fleet is permitted.
While admission of Iranian and Afghan nationals is authorised, departure of Iranian and Afghan citizens as well as transit of third party citizens is prohibited by both countries.
 - **Armenia - Iran border crossing of Meghri - Nordooz:**
Commercial and passenger fleet is prohibited by Armenia, while some recent exemptions, in particular for medical cargo, has been declared by Armenia.
- In March 2020, Iran's Ministry of Health published instructions and guidelines for combating the coronavirus (COVID-19) at the border crossing points of Iran.
- Please also note that:
 - All Iranian borders points are open for transit via the territory of Iran, provided drivers observe the published guidelines;

- The emergency hotline number is 190;
- As there are no specific restrictions, there is no requirement for a green lane and all transit routes are currently open to transport. Customs authorities are facilitating the transport of medicines and food.
- o On 5 April, the authorities of Razavi Khorasan Province prohibited passenger transport from Afghanistan to Iran at the Islam Qala - Dogharoun border crossing point. Goods transport has been exempted from this provision.
At Farah - Mahirood and Zaranj - Milak border crossing points, only goods transport and entry of Iranian and Afghan nationals is authorised. The exit of Iranian and Afghan citizens and transit of third country nationals is prohibited.

Source: Ministry of Road and Urban Development, I.R. IRAN MRUD – RMTO and Iranian Customs Administration

Ireland

Updated on 22/04/20

Restrictions on movements

- o The Irish Government have issued special advice about travelling, including restricting movements for 14 days on those entering Ireland who have been to affected areas. Freight transport is exempted. The government published a guidance note for supply chain workers. This document contains about one and half pages of useful guidelines for drivers.
- o To reduce the risk of infection, the ferry company Seatruck Ferries has temporarily stopped shipping any HGV drivers or any other passengers in their Irish Sea vessels. Accompanied road transport (complete truck combinations with driver) is then stopped until further notice, but the company will continue to carry unaccompanied semi-trailers, containers and swap bodies.
- o On 27 March, the National Transport Authority announced revised timetables for Dublin Bus, Go-Ahead Ireland and Bus Éireann, coming into effect on 1 April. Under the new timetables, Dublin Bus and Bus Éireann services will run at approximately 80% of normal levels, while Go-Ahead Ireland will run at approximately 94% of normal levels. Measures apply until further notice.

Facilitation measures

- o On 15 April, the Irish department of transport agreed to relax rules on driving and rest times for a further 6 weeks. Exemptions will apply from 17 April to 31 May for all haulage activity within the republic of Ireland and are as follows:
 - Art. 6.3: the fortnightly driving limit is increased from 90 to 112 hours.
 - Art. 8.4: the maximum of three reduced daily rest periods between any two weekly rest periods is increased from three to five; if a driver reaches the maximum of five in the first five days following the end of the previous weekly rest period, and then continues to drive on the sixth consecutive day, his daily log must not exceed thirteen hours for day six.
 - Art. 8.6: The current weekly rest rules will continue to apply, but no compensation will be required for a reduced weekly rest period. In any two consecutive weeks, drivers must continue to take at least either two regular weekly rest periods, or one regular weekly rest period and one reduced weekly rest period of at least 24 hours, whilst ensuring that the weekly rest period starts no later than six 24 hour periods from the end of the previous weekly rest period.

- Art. 8.8: possibility for the driver to take the regular weekly rest in the vehicle, as long as it has suitable sleeping facilities for each driver and the vehicle is stationary.
- o On 20 March, the Irish government relaxed national requirements for all drivers over 70 years who don't have an identified or specific illness: they will not be required to provide a medical report until 31 July 2020.
- o On 26 March, it was decided to extend the validity of driver's CPC cards due to expire during the crisis for a maximum of six months up to 26 September 2020.
- o On 28 March, the Road Safety Authority suspended the period of roadworthiness tests for M2, M3, N1, N2 and N3 vehicles and trailers. The measure applies until further notice.
- o On 20 April, the Minister for Transport, Tourism and Sport announced details of the legislative steps he has taken in support of the necessary closure of a range of Road Safety Authority services as result of the ongoing Covid-19 situation.

Under the new measures, the following have come into effect in relation to vehicle testing:

- NCT vehicles with a test that was or will be due on or after 28 March 2020 have that test date extended by 4 months
- Commercial Vehicle Roadworthiness Tests (CVRT) – vehicles with a test that was or will be due on or after 28 March have that test date extended by 3 months

The Minister has also taken the following steps in relation to driver licensing:

- Driving licences due to expire between 1 March 2020 and 30 June 2020 inclusive have had their date of expiry extended by 4 months
- Learner permits due to expire between 1 March 2020 and 30 June 2020 inclusive have had their date of expiry extended by 4 months
- Driver Theory Test certificates due to expire between 1 March 2020 and 30 June 2020 inclusive have had that date extended by 4 months
- Certificates of Competency – issued when people pass a driving test and required when applying for a first full driving licence - due to expire between 1 March 2020 and 30 June 2020 inclusive have had that date extended by 4 months
- Initial Basic Training certificates for motorcycle learners due to expire between 1 March 2020 and 30 June 2020 inclusive have had that date extended by 4 months

In addition, and in line with the arrangements previously in place for NCT certificates in relation to private cars, it will no longer be necessary to have a current Certificate of Roadworthiness (CRW) in order to tax a commercial vehicle. Companies should be able to renew the motor tax for a commercial vehicle from 21 April without need of a CRW.

Sources: IRHA and ITF

Italy

Updated on 08/05/20

Restrictions on movements

- o On 26 April, the Italian Prime Minister announced the "Phase 2" rules, applicable from 4-17 May, by way of DPCM 26 April 2020. Many of the rules currently in force will be maintained. It includes the mandatory use of a self-declaration document for any authorised movement. Concerning road transport and logistics, relevant information is the following:

- Art. 2.7: Companies whose activity must be suspended following modifications to ATECO codes listed in Annex 3 must complete the shipment of goods in stock by 30 April (ATECO Codes - <https://www.istat.it/it/archivio/17888>).
 - Art. 2.9: Companies whose activity can restart following modifications to ATECO codes listed in Annex 3 can undertake reopening preparations from 27 April.
 - Art. 3.2: The obligation for passengers to wear a face mask while being in publicly accessible indoor areas and on public transport does not apply to children under 6 years of age nor to people with disabilities which are not compatible with wearing a mask.
 - Art. 4.2: Before boarding, transport companies must check traveller's body temperature and transport documents. Boarding is refused in cases of fever or incomplete documentation. Transport companies must guarantee a minimum of 1m separation between travellers. Transport companies must supply travellers with appropriate personal protection equipment (masks, gloves) in case they don't have them.
 - Art. 5: Rules and procedures for people entering or transiting through Italy for work – the current rules continue to apply.
 - Annex 6, point 3 of the Protocol for Covid-19 containment: guidelines for the access of third party suppliers to companies' premises:
 - o Companies must identify entry, transit and exit procedures for their suppliers. Those procedures must consider itineraries and timings, with the aim of reducing contact between suppliers and company personnel.
 - o If possible, drivers must stay on board the vehicle. Drivers cannot access the company offices. Concerning loading and unloading activities, the minimum 1m distance must be observed.
 - o The company must designate or install toilet facilities for third party drivers/suppliers, separated from those used by its employees. Daily cleaning must be ensured.
 - o In cases where the company carries out own account transport, workers' security must be ensured at all times.
 - Annex 8: Protocol for road transport and logistics sector (adopted on 20 March).
 - Annex 9: Protocol for public transport (adopted on 14 March).
-
- o On 18 March, the Transport Ministry published a new decree: 14 days mandatory isolation for people entering the country. Such a decree does not apply to road transport workers delivering or transiting through Italy, provided they leave the country after 72 hours. These drivers must however fill a specific self-declaration (instructions for completing the self-declaration [here](#)).
 - o The State Police confirmed the self-declaration cannot be presented digitally (apps or pdfs), but has to be printed, signed and given to the police officer. Photocopies of a completed document are not accepted either.
 - o On 7 April, the Ministry of the Interior provided further instructions for personnel employed by companies, not based in Italy, carrying out international freight transport operations to or through Italy. Instructions concern the application of Decree 145/2020. People (including travelling staff of foreign companies) entering Italy with their own vehicle or with a private transport vehicle for proven work, needs to have to comply with the following:
 - The transit on the Italian territory must not exceed 72 hours. The period could be extended for further 48 hours in case of specific and justified needs.
 - Upon entrance to Italy, drivers must notify the entry to the prevention department ("Dipartimento di Prevenzione") of the local health authority (ASL) and submit the duly filled in self-declaration that can be downloaded [here](#).
 - Also, drivers transiting through Italy must comply with the notification requirements. The permitted stay in the country cannot exceed 24 hours, which could be extended for a further 12 hours in case of specific and justified needs.

A department of the Ministry is currently identifying the contact points for every border crossing point. The list will be updated as soon as changes will be made available and can be consulted [here](#). IRU and local member associations advise drivers to notify local health authorities as soon as possible, and to carry the original of the self-declaration on board.

Facilitation measures

- The Italian government also published a decree 18 of 17/3/2020 (so-called "Cura Italia") to address this crisis. It allows for an extension in validity of a number of road transport-related authorisations and certificates, as well as extensions for the payment of customs duties. Some elements mentioned are:
 - Art. 92.3: the date for payment of customs duties due between 17 March 2020 and 30 April 2020 can be extended until 30 May 2020 without additional interest charges.
 - Art. 92.4: vehicles that are due to be checked before 31 July /2020 can now remain in circulation until 31 October 2020.
 - Art. 103.1: certificates, attestations and permits expiring between 31 January 2020 and 15 April 2020 are now valid until 15 June 2020.
 - Art. 104.1: Identity documents and driving licences expiring after 17 March 2020 are now valid until 31 August 2020
- On 23 March, the government published further relieves: certificates of professional competence and ADR driver training certificates expiring between 29 February 2020 and 29 June 2020 are now valid until 30 June 2020. Temporary driving permits are automatically renewed until 30 June 2020 in case the medical committee cannot gather on the day scheduled for the examination due to current emergency situation.
- On 31 March, the Ministry of Transport has extended the temporary authorization concerning the use of rolling highway permits, normally used by non-EU companies to enter Italy by rail; such permits are momentarily valid for entering Italy by road too. The extension applies until further notice.
-
- Domestic Sunday traffic bans are lifted for goods vehicles heavier than 7.5 tonnes on the following days: 10 May and 17 May.
Sunday and holiday traffic bans for vehicles carrying out international transport in Italy are also lifted until further notice.
- On 21 April, ANAS and ASPI have confirmed that prorogations mentioned in Art. 130 c.2 of Decree 18/2020 are applicable to certification for exceptional load transport operations. Therefore, authorisations which expire between 31 January and 15 April can be extended up to 15 June.

Sources: Italian Government, Italian Ministry of Infrastructure and Transport, Ministry of Interior, Sardinia Region, FIAP and CONFETRA

Jordan

Updated on 7/04/20

Restrictions on movements

- The Kingdom of Jordan has taken measures to limit the spread of the Coronavirus (COVID-19). Between the set of measures, it has been announced that:
 - airlines are closing flights from and to Jordan as of March 17th,

land borders with the West Bank, Syria, Iraq, and Saudi Arabia are closed for passengers transport. **Goods are allowed to pass.**

- A curfew is in operation 24 hours a day, with people only allowed to go to their local grocery stores. Police and army have been deployed on the streets.
- Customs administrations are all working remotely. At the borders, work is maintained with staff reduction in order to ensure the social distancing required to stop the spread of the virus.
- Borders with Saudi Arabia are open and only essential goods are allowed to transit.

Source: RACJ

Kazakhstan

Updated on 30/04/20

- Freight vehicles and their drivers can now circulate across the state border of the Republic of Kazakhstan without restrictions.
- In order to limit the spread of coronavirus (COVID-19), and according to the decision of the State Commission following the state of emergency declared on 20 March 2020, freight vehicles and their drivers can cross the state border of the Republic of Kazakhstan without restriction, but will however be subject to sanitary epidemiological measures.
- The Ministry of Industry and Infrastructural Development of the Republic of Kazakhstan issued a memo for drivers, carriers and transport companies engaged in international freight transport and passengers across the territory of the Republic of Kazakhstan. This memo has been prepared to help them comply with the current measures in place to prevent coronavirus (COVID-19) infections in Kazakhstan.
- The combined list of open and temporarily closed border crossing points specified for road transport is as follows:

		Currently open border crossing points	Temporarily closed border crossing points (from 4 April)
Kazakhstan	Kyrgyzstan border	- Karasu (Zhambyl region) - Aisha-bibi checkpoint (Zhambyl region)	- Aukhatty (Zhambyl region) - Kordai (Zhambyl region) - Sapatai Batir (Zhambyl region) - Sartobe (Zhambyl region) - Kagen (Almaty Region)
Kazakhstan	Uzbekistan border	- Kaplanbek (Turkestan region) - Kazygurt (Turkestan region) - Tazhen (Mangistau region)	- Tselinniy (Turkestan region) - Sirdaria (Turkestan region)
Kazakhstan border	Turkmenistan border	- Temir Baba (Manistau region)	
Kazakhstan	China border	- Kolzhat (Almaty region) - Nurzholy (Almaty region) - Dostyk (Almaty region) - Bakhty (East Kazakhstan region) - Maykapchagay (East Kazakhstan region)	- Kolzhat (Almaty region) - Bakhty (East Kazakhstan region) - Maykapchagay (East Kazakhstan region)

Kazakhstan - Russia border		<ul style="list-style-type: none"> - Kairak (Kostanay region) - Zhana Zhol (North Kazakhstan region) - Karakoga (North Kazakhstan region) - Sharbakty (Pavlodar region) - Urlitobe (Pavlodar region) - Kosak (Pavlodar region) - AuyI (East Kazakhstan region) - Ube (East Kazakhstan region) - Zhaisan (Aktobe region) - Alimbet (Aktobe region) - Syrym (West Kazakhstan region) - Taskala (West Kazakhstan region) - Zhanibek (West Kazakhstan region) - Kurmangazy (Atyrau region) 	<ul style="list-style-type: none"> - Kandibai (Kostanay region) - Akbalshik (Kostanay region) - Kyzyl Zhar (North Kazakhstan region) - Naiza (Pavlodar region) - Zheskent (East Kazakhstan region) - Baitanat (East Kazakhstan region) - Koanbai (East Kazakhstan region) - Orda (West Kazakhstan region) - Shagan (West Kazakhstan region) - Karashatau (Atyrau region)
----------------------------	--	----------------------------------------------------------------------------------------------------------------------------------------------------------------------------------------------------------------------------------------------------------------------------------------------------------------------------------------------------------------------------------------------------------------------------------------------------------------------------------------------------------------------------------------------------------------------------------------------------------------------------	--------------------------------------------------------------------------------------------------------------------------------------------------------------------------------------------------------------------------------------------------------------------------------------------------------------------------------------------------------------------------------------------------------------------------------------------------------------------------

- o Following communications with BGL, KAZATO and the Kazakh authorities, German individuals willing to enter Kazakhstan should be aware of the following:
 - **Visa-free entry of German citizens** into Kazakhstan for periods of up to **30 days has been suspended** since 17 April until 1 November 2020 due to the Corona crisis. As a result, German citizens will need a visa of entry into Kazakhstan even if their planned stay is less than 30 days.
 - Also, for the duration of the state of emergency in Kazakhstan, **issuance of a visa has been completely suspended**.

Therefore, **entry into Kazakhstan has become impossible for German drivers unless they are in possession of a visa valid for a stay longer than 30 days.**

Further details can be found in the dedicated [webpage](#) of German Ministry of Foreign Affairs.

IRU is in contact with local authorities for further information on rules applicable to drivers coming from other countries.

Source: KAZATO (<https://www.kazato.kz/posts/utochnennyj-spisok-punktov-propuska-na-gosudarstvennoj-granice-respubliki-kazahstan>)

Kuwait

Updated on 17/04/20

- o Customs were allowing only 25-30 trucks to enter the country, per day, since the start of the pandemic. This has created long queues at the border with Saudi Arabia, which could result in waiting times of up to 3 days.
 Customs are allowing clearance to be done at the border rather than inland. This has significantly eased the traffic and the queues are gradually diminishing.

Source: IRU Secretariat

Latvia

Updated on 23/04/20

Restrictions on movements

- The Cabinet of Ministers published a decision stating that, with effect from 17 March, no passenger transport will be allowed through airports, ports, by bus and by rail (excluding carriage of passengers by official aircraft and military transport).
- The Ministry of Transport can make exceptions for some international passenger services based on a case-by-case basis.
- The carriage of goods is allowed. However, from 18 March 2020, people entering Latvia will have to fill out the following application forms and submit them to the State Border Service:
 - Form for Latvian citizens, and persons permanently residing in Latvia (holders of permanent/temporary residence permits and long-term "D" visas, provided they were issued in the Republic of Latvia).
The form is available in Latvian, Russian and English.
 - Form for Lithuanian and Estonian citizens and residents (holders of permanent/temporary residence permits and long-term "D" visas, provided they were issued in Lithuania or Estonia), returning to Lithuania or Estonia.
 - By signing the form, the person "undertakes not to visit publicly available spaces". Parkings and refuelling station are not concerned by these measures.
The form is available in Russian and English.
 - Form for all freight carriers (including foreigners transiting through Latvia), by which the person "undertakes not to visit publicly available spaces". Parkings and refuelling station are not concerned by these measures.
The form is available in Latvian, Russian and English.
- On 23 April, Latvian Customs authorities informed that drivers must use self-protection equipment (masks and gloves) upon entering or leaving the country. The obligation enters into force immediately.

Sources: LATVIJAS AUTO, ITF, Latvian Customs

Lebanon

Updated on 7/04/20

- Borders with Syria are completely closed. Beirut Port is operational.

Source: Lebanese customs authority

Lithuania

Updated on 23/04/20

Restrictions on movements

- On 16 March, the Lithuanian government announced nationwide quarantine (level 3 of the national plan). **This quarantine has now been extended until 24:00 of 11 May.**
- Restrictions at the borders of Poland and Latvia have been reintroduced. With effect from 14 March, foreign nationals are not permitted to enter the country by any means of transport. Exceptions are in place for persons residing in the Republic of Lithuania, and persons working for Lithuanian companies engaged in international commercial transport or performing international commercial transport in any type of vehicle.
- Persons returning or arriving from foreign countries are required to isolate for 14 days. Please note that this does not apply to crew or crew members working for Lithuanian companies engaged in international commercial transport or performing international commercial transport in any type of vehicle; or to any foreign citizens transiting through the Republic of Lithuania with a mandatory escort (convoy) to the state of their residence, and who do not have symptoms of COVID-19.
- For crew or crew members who either work for Lithuanian companies engaged in international commercial transport, or who perform international commercial transport in any type of vehicle, isolation is mandatory from the day of arrival in the Republic of Lithuania until the day of departure from its territory, but not exceeding 14 days. The National Public Health Center under the Ministry of Health organise screening at border crossings for symptoms of COVID-19 when returning or arriving from abroad.
- Foreign carriers with cargo vehicles transiting through Lithuania are permitted. However, crew or crew members performing international commercial transport in any type of vehicle must travel through the territory of the Republic of Lithuania without stopping unnecessarily. Upon detection of any COVID-19 (coronavirus infection) symptoms at the border of Lithuania, crew or crew members engaged in international commercial transport in any type of vehicle, transiting through the territory of Lithuania, will not be allowed to enter the country unless they are citizens or legal residents of Lithuania.
- Drivers operating to or through Lithuania, must record all stops made during their international route in a free-form document, together with the reason for stopping and the duration. This applies to both Lithuanian and foreign drivers.

Restrictions at borders

- The number of border crossing points accessible for entry into Lithuania have been reduced to the following:
Kalvarijos–Budzisko, Saločių–Grenstalė, Būtingės–Rucavos, Smėlynės–Medumės, Medininkų–Kamenyj Logo, Raigardo–Privalkos, Kybartų–Čerņyševskojės, Panemunės–Sovetsko, Kenos–Gudagojo, Šalčininkų–Benekainių, Mockavos–Trakiškių, Lazdijų–Ogrodnikų, Vilnius, Kaunas, Palanga, Šiauliai international airports, Vilnius railway station and Stasyulai railway border crossing points, and Klaipėda seaport.
- The entry of persons and/or their passenger cars into the territory of the Republic of Lithuania is allowed only through the following international state border crossing points: Kalvarija–Budziskas and Saločiai–Grenstalė. In exceptional cases, after obtaining the permission of the Head of the State Border Guard Service under the Ministry of the Interior of the Republic of Lithuania, or a person

authorised by him, persons and/or their passenger cars may enter the Republic of Lithuania through other international border crossing points.

- Border crossing for commercial and/or international freight transport is additionally carried out through the Stasyiai–Benekainiai railway border crossing point and the Pagėgiai–Sovetsk railway border crossing point, and the facilitated transit of persons from the territory of the Russian Federation to the Kaliningrad region of the Russian Federation, and back to the territory of the Russian Federation, shall additionally pass through the Kena Railroad Border Inspection Post and the Kybartai Railway Border Inspection Post.
- It is prohibited to transport passengers and/or transport their passenger cars by passenger ships (ferries) to the Republic of Lithuania, with the exception of the ferry along the Kiel–Klaipėda–Kiel route. In exceptional cases, on the proposal of the Minister of Foreign Affairs, the decision on the permit will be made by the Government of the Republic of Lithuania. Passenger flights to and from Lithuanian airports are also prohibited unless authorised by the Lithuanian Transport Safety Administration, subject to approval from the ministries for transport and foreign affairs.

Source: LINAVA

Luxembourg

Updated on 18/04/20

Restrictions on movements

- A state of emergency has been declared for 3 months but may be cancelled earlier. There are no restrictions considering transport of goods in Luxembourg, but there may be short waiting times at the borders.
- The Ministry of Mobility has set out new measures for bus and coach transport in Luxembourg. The measures apply immediately and until further notice and provide for the following:
 - The front door of multi-door vehicles can no longer be used by passengers
 - The first row of passenger seats should remain unoccupied. The driver is requested to put up barrier tape or similar
 - The driver does not sell tickets (RegioZone) anymore
 - The social distancing rules must be displayed on the vehicle
- The following measures apply until further notice:
 - Reduction of frequency of national regular bus services
 - Suspension of international bus services except for repatriation transport

Facilitation measures

- On 16 April, the Luxembourg Minister of Mobility has signed a new relaxation of the rules regarding driving and rest times. The new rules apply from **18 April until 31 May**, included, and are as follows:
 - Art. 6.1: Increase of the maximum daily driving time from 9 hours to 11 hours, not more than three times per week
 - Art. 6.3: Increase of the fortnightly driving time from 90 hours to 96 hours

- Art. 8.6: Postponement of a weekly rest period from six to seven 24-hour periods, with the obligation to compensate during the following week
- Art. 8.8: possibility for the driver to take the regular weekly rest in the vehicle, as long as it has suitable sleeping facilities, for each driver and the vehicle is stationary.
- o On 8 April, the government extended the validity of Certificates of Professional Competence that expire during the crisis for further six months.
- o Validity of a series of ADR certificates is extended over different periods of time. Full list can be consulted here.
- o Note that no traffic bans have been lifted in Luxembourg.

Sources: CLC and ITF

Source: https://www.cltc.be/en/press-releases/2020/04/08/

Malta

Updated on 04/05/20

Restrictions on movements

- o Sea and air passenger transport is banned until further notice.
- o There are currently no restrictions on either sea or air freight, between Malta and the continent.
- o Hauliers are urged to send unattended trucks and goods on RoRo vessels and to keep one team of drivers in Malta as well as one on the continent. In cases where this is not possible, a maximum of 2 drivers per truck will be permitted to disembark, however they may be subject to quarantine.

Facilitation measures

- o According to the European Commission, Malta granted relaxations on driving and rest times rules. Relaxations apply until 31 May to all drivers involved in national and international transport of goods being performed within the country. Provisions from EU Regulation 561/2006 derogated from:
 - Art. 6(1): replacement of the maximum daily driving limit of 9 hours with one of 11 hours;
 - Art. 6(2): replacement of the maximum weekly driving limit of 56 hours with one of 58 hours;
 - Art. 7: replacement of the minimum daily breaks requirements by imposing a break of 45 minutes after 5 and a half hours;
 - Art. 8(2): Reduction of the daily rest requirements from 11 to 9 hours.

Sources: ITF and European Commission website

Moldova

Updated on 8/04/20

Restrictions at borders

- In the Republic of Moldova, several state border crossing points are closed for an indefinite period. According to Provision No.6 of 26 March 2020 from the Commission for Exceptional Situations of the Republic of Moldova, there will be a temporary closure of border crossing points "Costești-Stanca" (Moldo-Romanian border) and "Briceni-Rossoșani" (Moldo-Ukrainian border), from 29 March 2020.
- The following border crossing points will still operate normally:
 - **At the border with Romania:**
 - Leușeni - Albița (road/international)
 - Sculeni - Sculeni (road/international)
 - Giurgiulești - Galați (road/international)
 - Giurgiulești - Galați (rail/international)
 - **At the border with Ukraine:**
 - Otaci - Moghilev-Podolsk (road/international)
 - Vălcineț - Moghilev-Podolsk (rail/international)
 - Ocnîța - Sokireanî (rail/international)
 - Giurgiulești - Reni (road/international)
 - Giurgiulești - Reni (rail/international)
 - Etulia - Frikăței (rail/international)
 - Palanca - Maiaki-Udobnoe (road/international)
 - Tudora - Starokazacie (road/international)
- Additionally, from 17 March 2020, it is prohibited to cross the Moldovan-Ukrainian state border, and from 17 March, foreign nationals are prohibited from entering the Republic of Moldova from Romania using state border crossing points open to traffic.
- This restriction does not apply to foreign nationals and stateless persons domiciled or permanently / temporarily living in the Republic of Moldova, drivers and service personnel involved in the transport of freight, aircraft / ship crews and train crews. In addition, staff of diplomatic missions and consular offices based in the Republic of Moldova, and staff working at international organisations / missions and their family members are also exempted.
- Individuals entering Moldova must fill in a medical card and sign a declaration of personal liability for compliance with the self-isolation regime for 14 days at specified locations.
- As an exception, car drivers and transport service personnel that carry cargo, crews of aircraft/ships and train crews, are not required to comply with self-isolation in the absence of clinical signs of respiratory infection or fever.

Source: AITA (from Customs Service of the Republic of Moldova)

Mongolia

Updated on 04/05/20

- Following its 20th meeting held on 28 April 2020, the State Emergency Commission of Mongolia has extended a partial state of emergency until 31 May 2020.
 - In relation to this decision, international air, road and rail passenger transport is temporarily suspended until 31 May 2020.
- Please note:
 - National bus, air and rail transport are still operating normally
 - All borders remain open for the flow of goods and truck drivers

- All foreign trucks with goods arriving at the border crossing point of Altanbulag are subject to disinfection, which will be organised on the spot by the authorities. If the final destination is Mongolia, trucks will then be escorted by the police to the customs control zone in Ulaanbaatar, in order to perform the customs clearance formalities and to enable the delivery of goods to the consignee. Upon completion of these procedures, foreign trucks are requested to return immediately to the border crossing point of Altanbulag, and then exit the country. If trucks are in transit, vehicles will be escorted by the police to the Zamiin-Uud border crossing point. Stops at urban areas along the road is not permitted.
- Despite the fact that there are no restrictions imposed by the State Emergency Commission of Mongolia for trucks and goods crossing the Mongolian border, from 30 March 2020 foreign goods vehicles are only allowed to enter Mongolia through the border crossing points **Altanbulag** and **Ulaanbaishint**. As an additional measure, foreign goods vehicles are escorted to the point of destination or exit of the country. Therefore, foreign carriers are strongly advised not to enter Mongolia through other border crossing points, except for Altanbulag and Ulaanbaishint, pending clear instructions from competent authorities.

Source: NARTAM and IRU Moscow office

Morocco

Updated on 16/03/20

- The country has taken strict measures to limit the spread of Coronavirus (COVID-19). International passenger movement is under "full ban" (air, road and ferry), with no transport operations handled between Morocco and the following countries (except special operations to let passengers get back to their country of origin): Italy, Spain, France, Austria, Denmark, Greece, Switzerland, Sweden, Norway, Turkey, Lebanon, Egypt, Bahrain, UAE, Oman, Jordan, Tunisia, Senegal, Mauritania, Niger, Mali, Chad, Canada and Brazil.
- No limit to freight transport has been reported.
- National passenger transport operations are maintained.

Sources: ASTIC and Moroccan Ministries of Foreign Affairs and Transport

Nepal

Updated on 6/05/20

- The government of Nepal has extended the lockdown one more time. The lockdown is now in effect **until 18 May**. All border crossing points will remain closed.
- Restrictions also remain in place for the movement of people and vehicles within the country. Emergency movements only will be permitted, with prior permission from the District Administration Office. These restrictions also apply to international freight movements.

Source: Nepal Automobiles' Association (NASA)

The Netherlands

Updated on 17/04/20

Restrictions on movements

- Currently, the Netherlands is under a relatively relaxed Coronavirus (COVID-19) regime. Most people work from home. The government aims to have the number of infected people at the same time under control. Shops remain open although certain department stores have individually decided to close.
- To enable an efficient loading and unloading procedure at shippers' premises, it is recommended that drivers take personal protection materials with them such as masks and gloves.
- The associations are in communication with the government in order to safeguard restaurants and other facilities for drivers. The Ministry recommends that drivers take their meals at fuel stations. All other restaurants remain closed until at least 6 April.
- There is an ongoing debate in the Dutch Parliament and it is possible that measures will become stricter in the coming days.
- TLN has cooperated with a number of other logistical associations in the Netherlands to develop a short and simple flyer towards all the actors in the logistics chain and other service providers calling for respect and protection for professional truck drivers while doing their job. It is in Dutch only and can be found [here](#).
- The Dutch government is also maintaining a Q&A on travel restrictions in the Netherlands: [here](#).

Facilitation measures

- In order to guarantee the flow of supplies, especially those destined for the supermarkets and pharmacies, the Dutch Minister of Infrastructure and Water Management has extended the relaxation on driving and rest times **until 31 May 2020**.
The same conditions continue to apply for the following:
 - Maximum daily driving time of 11 hours;
 - Maximum weekly driving time of 60 hours;
 - Maximum fortnightly driving limit of 96 hours;
 - Postponement of a weekly rest period from six to seven 24-hour periods.

Sources: Evofenedex and TLN

North-Macedonia

Updated on 17/03/20

Restrictions on movements

- To limit the spread of the Coronavirus (COVID-19), the Government of the Republic of North Macedonia has taken the decision to close all border crossings in the Republic of Northern Macedonia to foreign nationals, passengers and vehicles (with the exception of entry and transit of freight)

vehicles), representatives of the diplomatic corps in the country, and any other persons for whom the Ministry of the Interior grants permission to, with prior agreement of the Main Coordination Crisis Staff confirming that there is a particular state or economic interest. Goods vehicles and persons exempt from the restriction will be allowed to enter the Republic of North Macedonia under special terms and conditions in accordance with the protocol of the Ministry of Health.

- Border crossing points open for freight are the following: Bogorodica (border with Greece), Kafasan (border with Albania), Tabanovce (border with Serbia), Deve Bair (border with Bulgaria) and Blace (border with Kosovo).

Source: AMERIT

Norway

Updated on 04/05/20

Restrictions on movements

- Everyone entering Norway by ferry, air, bus or private car, from countries other than Sweden and Finland, will be put in a compulsory 14-day quarantine (even if they are not experiencing any symptom of COVID-19). Tourists not willing to comply with this measure will have to return immediately. **International road freight is exempted.**
- However, the exception does not apply to drivers and personnel employed by Norwegian companies, who have stayed in countries outside the Nordic countries for a period before returning to Norway (many companies work with foreign drivers working on turns).
- In an effort to reduce the spread of the coronavirus (Covid-19), the Norwegian border control measures will be extended for 90 days, after 15 May. The current measures in place involve the posting of police and military employees at border stations in order to control persons crossing the borders. It is important for truck drivers to have their passport and driving license readily available when crossing the border.

Facilitation measures

- On border crossings between Norway and neighbouring countries, controls and prioritisation of goods are the following:
 - Goods transport to and from Norway is not restricted in any way.
 - There are no extra queues reported at Norwegian border crossings.
 - In addition to the standard customs procedures, the border control has been reinforced by representatives from the police and the army. Their main task is to check the identity of drivers (passport, driving licences, etc.).
 - Prioritisation of goods: Companies who had previous arrangements with the Customs Directorate had some advantages related to customs procedures, but these advantages do not apply currently. There is an express customs procedure in place, but only at one border station. In general, there have been no new changes of priorities when it comes to border crossing.
 - Normally border crossings for trucks on the Norwegian-Swedish and Norwegian-Finnish border are quick and efficient compared to most other countries. There has been no substantial change to this pattern since the outbreak of the Covid-19 virus.
 - The exception is the Norwegian-Russian border which is currently closed.

- Norwegian quarantine provisions: These have not changed - everyone who enters the country must be in quarantine for 2 weeks, except for truck drivers who come by car and for truck drivers who come to work. Truck drivers can work, but must follow the quarantine rules when he/she is not working (in addition to all other measures to prevent infection).
- o On 15 April, rules on driving and rest times were relaxed in Norway. Relaxations will apply only for freight transport operations until 31 May and are as follows:
 - The daily driving time is extended from 9 hours to 11 hours.
 - Maximum weekly driving time raised from 56 hours to 58 hours.
 - Maximum fortnightly driving limit raised from 90 hours to 96 hours.
 - Reduction of the daily rest from 11 hours to 9 hours.
 - A weekly rest of a minimum of 24 hours must be followed by a weekly rest of 45 hours, meaning a reduced weekly rest is allowed every other week. The reduced weekly rest does not have to be compensated.

Sources: NLF and EC (DG Move)

Pakistan

Updated on 6/05/20

- o On 1 May, the Ministry of Interior of Pakistan announced the complete sealing of the western border. New measures apply immediately and can be seen [here](#).

Source: PNC-ICC

Poland

Updated on 06/05/20

Restrictions on movements

- o On 13 March, the Prime Minister of Poland announced a "state of emergency". In addition to measures to limit public gatherings, the government announced that border controls will be temporarily restored from 15 March (00:00). This measure has been prolonged to 13 May.
- o During this period:
 - Foreigners will not be allowed to enter Polish national territory. All air traffic and train movements coming from abroad will be temporarily suspended.
 - Polish citizens and foreigners working in Poland that are returning from abroad must undergo a two week quarantine period.
 - National bus, air and rail transport will operate normally.
 - International road freight transport is not included in these restrictions. Borders remain open to the flow of goods and truck drivers operating international road freight will not have to comply with the two week quarantine period. The list of border crossing points open during this period is available [here](#).

- On 19 March, the Polish Minister of Health lifted the previous duty of fulfilment of driver localisation forms. In addition, according to information on the Border Guard website, quarantine is not imposed on:
 - people living in Poland who work in a neighbouring country and who regularly cross the border (cross border workers).
 - foreigners living in a neighbouring country who work in Poland and cross the border regularly (cross border workers).
 - drivers engaged in the professional transport of goods and passengers.

In addition, from 4 May, any person crossing internal borders (of the European Union) with the Republic of Poland for professional activities (and not only cross-border workers) will be exempted from the quarantine period. This exemption does not apply to health workers or social workers.

Measures applying to drivers: Health check and quarantine

- Health checks are still taking place at border crossing points. Drivers with a temperature of above 38 degrees will automatically undergo a medical examination and will not be able to continue driving. The updated border waiting times can be found here: www.granica.gov.pl.
- The Minister of Internal Affairs and Administration has extended the period of border control at the internal border with Germany, Lithuania, the Czech Republic, and Slovakia until 13 May. The current restrictions on the entry of foreigners into Poland will also be maintained.
- On 24 March, Polish Authorities amended the rules on mandatory quarantine: drivers engaged in international road transport operations using vehicles below 3.5 tonnes are not any longer subject to quarantine.
- As from 23 April, drivers operating in Poland are obliged to wear a face mask whilst they are outside of their cabin. In case there are two people in the cabin, both of them have to wear a face mask whilst driving.

Facilitation measures

- The Polish Ministry of Infrastructure relaxed rules on driving and rest times from 17 April to 31 May. Relaxations apply to drivers performing national and international road transport of goods and persons, and are as follows:
 - Art. 6.1: the daily driving time may not exceed 11 hours
 - Art. 6.2: the weekly driving time may not exceed 60 hours
 - Art. 6.3: the total driving time over the next two weeks may not exceed 96 hours
 - Art. 7: after a driving period of five and a half hours, the driver is entitled to a continuous break of at least forty-five minutes
 - Art. 8.8: if a driver makes this choice, he can also use the regular weekly rest period in the vehicle, provided he has adequate sleeping facilities for each driver and the vehicle is stationary
- Temporary derogations from the application of the provisions apply to drivers performing road haulage. Whereas, drivers performing road passenger transport are subject to the above-mentioned derogations, only in the case of transport carried out in connection with the return of citizens to their countries of residence.

According to the wording of the notification agreed with the European Commission:

- the drivers referred to above must indicate, on the back of the analogue tachograph record sheet or the digital tachograph printout, the derogation cases
- the use of temporary derogations must not cause deterioration of drivers' working conditions and road safety levels.

- On 30 April, the Polish Prime Minister announced a relaxation of the conditions imposed on commuters at border crossing points. **From 4 May, Polish citizens working or studying in Germany will no longer have to spend 14 days in quarantine when returning to Poland, and corresponding regulations have been agreed with neighbouring countries.** **Polish borders are still closed for foreigners, this applies until 13 May.** People with permanent residence permits, truck drivers and diplomats are exempt from the provision.

Sources: ZMPD and DSLV

Portugal

Updated on 15/04/20

Restrictions on movements

- On 9 April, the Council of Ministers approved the extension of the state of emergency **until 00:00 on 14 May.** Borders will remain closed for the movement of people. International freight transport, cross-border commuters and emergency vehicles are exempted from restrictions.
- However, only major border crossings with Spain will remain open: Quintanilha, Tui, Vilar Formoso, Elvas, Castro Marim, Vila Verde de Raia (Chaves), Monfortinho (Castelo Branco), Marvão (Portalegre) and Vila Verde de Ficalho (Beja).
- The municipality of Ovar remains in quarantine (state of calamity). Freight transport to the municipality is only allowed for the supply of authorised industries (the list of which can be found [here](#)), supermarkets, pharmacies and petrol stations. All other commercial establishments and non-essential services are closed, and movement of people to and from the municipality of Ovar is limited.
- In order to prevent the spread of Covid-19, companies should telework whenever possible and non-essential shops should close.
- International goods and freight transport is permitted regardless of the type of services carried out or the type of goods transported. However, drivers should respect hygiene and sanitary requirements set out to prevent the spread of the virus.

Source: ANTRAM

Romania

Updated on 22/04/20

Restrictions on movements

- On 14 April, the Romanian President extended the state of emergency on the territory of Romania for an **additional 30 days, starting from 15 April.** The same conditions apply. The text of the decree can be read [here](#) (Romanian only).

- On 4 April, the Romanian Ministry of Internal Affairs issued Military Ordinance No.7, which details new measures for the road transport of persons and goods that have been put in place and are as follows:
 - Article 11: international road transport of persons through regular services, special regular services and occasional services in international traffic has been suspended until the end of the state of emergency. The provision applies to routes between Romania and Italy, Spain, France, Germany, Austria, Belgium, Swiss Confederation, United Kingdom, Northern Ireland, the Netherlands and Turkey.
 - Article 12: upon entering Romania, drivers of goods vehicles heavier than 2.4 tonnes and who do not have symptoms associated with the coronavirus (COVID-19) must complete a declaration using the template from the Ministry of Transport, Infrastructure and Communication, where details of the location where drivers can be contacted during the period between the two transports must be given (templates of these forms are available in Romanian [here](#)). Drivers are not required to undergo self-isolation at home or quarantine, provided that the employer ensures they use protective materials against coronavirus (COVID-19).
Note: foreign drivers of goods vehicles heavier than 2.4 tonnes who are transiting Romanian territory are not required to complete the medical statement as provided in Art. 14 (see below).
 - Article 13: the provision of Article 12 applies accordingly to drivers of goods vehicles heavier than 2.4 tonnes, who are travelling for professional reasons either from Romania to another European Union Member State, or from another EU Member State to Romania, to the state of residence of the driver, regardless of whether the trip is made in his/her freight vehicle, by individual means of transport or on his/her own. Upon entry to Romania they must present an employee certificate signed by the employer.
 - Article 14.1: drivers of goods vehicles heavier than 2.4 tonnes who are transiting Romanian territory are not required to complete the medical statement upon entry into Romania, provided they meet the following minimum conditions:
 - ✓ They only use transit corridors, and border crossing points at the end of these corridors, approved by the Ministry of Transport, Infrastructure and Communication and the Ministry of Internal Affairs. Any deviation from these is not permitted.
 - ✓ Transit through Romanian territory must be done within the minimum time frame, and must not exceed 48 hours from entry into Romania, including stationary periods for their daily rest.
 - ✓ Parking of the vehicle is done exclusively in allocated parking areas located along the identified transit corridors.
 - Article 14.2 - In the case of non-compliance with the conditions provided in paragraph 1 (14.1), the driver of the vehicle will be obliged to enter quarantine for 14 days, bearing any expenses incurred for this quarantine.
 - Article 14.3 - Upon entering Romania the driver is required to apply a special sticker from by the State Inspectorate for Control of Road Transport to the vehicle's windscreen, in order to show the transit corridors (the model of which has been established by the Minister of Transport, Infrastructure and Communications).
- Drivers transiting Romania must fill out this form when entering the country. The form must be handed over at the border of exit.
Note: In this case, the Romanian Inspectorate for Road Transport Control confirmed that professional drivers are also required to have the form provided by ANNEX 3, Template of Certificate for International Transport Workers (EC communication on green lanes) [details here](#).
- Romanian authorities have also published an interactive map displaying transit corridors, refuelling stations and rest areas.
- The Romanian Ministry of Transport publishes daily information regarding the situation at border crossing points on its website [here](#). The information is updated every evening at 20:00. The updated border waiting times and the list of border crossing points closed [can be found here](#).

- In addition, the Romanian Ministry of Internal Affairs issued Military Ordinance No.8, which details new measures as follows:

The following State Border Crossing Points will remain totally or partially closed during the entire period of the state of emergency:

- **At the Romanian-Hungarian Border:**
 - ✓ Turnu, Arad County (except for the movement of cross-border workers);
 - ✓ Salonta, Bihor County – railway and road (except for the movement of cross-border workers by road);
 - ✓ Săcuieni, Bihor County (except for the movement of cross-border workers);
 - ✓ Valea lui Mihai, Bihor County - railway and road (except for railway freight traffic);
 - ✓ Carei, Satu Mare County.

Note: A cross border-worker is understood as a person who makes proof of living and working within an maximum area of 30 km from the Romanian-Hungarian state border, calculated from the nearest border-crossing point open for people, and who returns home at least once a week. The Romanian-Hungarian border-crossing points open for cross-border workers when entering Romania are the following: Cenad, Nădlac, Turnu, Vârșand, Salonta, Borș, Săcuieni, Urziceni, Petea.

- **At the Romanian-Bulgarian Border:**
 - ✓ Negru Vodă, Constanța County;
 - ✓ Lipnița, Constanța County;
 - ✓ Dobromir, Constanța County;
 - ✓ Zimnicea, Teleorman County;
 - ✓ Turnu Măgurele, Teleorman County;
 - ✓ Bechet, Dolj County (except for railway freight traffic).
- **At the Romanian-Ukrainian Border:**
 - ✓ Sighetu Marmăției, Maramureș County;
 - ✓ Isaccea, Tulcea County.
- **At the Romanian-Moldovan Border:**
 - ✓ Rădăuți-Prut, Botoșani County;
 - ✓ Oancea, Galați County.
- **At the Romania-Serbian Border:**
 - ✓ Porțile de Fier II, Mehedinți County;
 - ✓ Drobeta-Turnu Severin, Mehedinți (except for railway freight traffic);
 - ✓ Orșova, Mehedinți County;
 - ✓ Moldova Nouă, Caraș-Severin County;
 - ✓ Naidăș, Caraș-Severin County;
 - ✓ Vâlcani, Timiș County;
 - ✓ Stamora-Moravița, Timiș County- railway (except for railway freight traffic);
 - ✓ Lunga, Timiș County;
 - ✓ Foeni, Timiș County;
 - ✓ Jimbolia, Timiș County - railway (except for railway freight traffic).

Facilitation measures

- Romanian Authorities have extended the temporary relaxation of the enforcement of driving and rest time rules for drivers performing domestic/international road transport of goods. This relaxation is granted pursuant to Article 14.2 of Regulation (EC) No 561/2006. This exception applies **from 17 April to 31 May**. The measures lifted are the following:
 - Art. 6.1: replacement of the maximum daily driving limit of 9 hours with one of 11 hours.
 - Art. 7: replacement of the minimum daily breaks requirements by imposing a break of 45 minutes after 5 and a half hours driving.
 - Art. 8.1: reduction of the daily rest requirements from 11 to 9 hours.
 - Art. 8.6: postponement of a weekly rest period beyond six 24-hour periods.

- On 16 April, the Ministry of Internal Affairs issued a new Military Ordinance for which the measures regarding the ban on exporting some agricultural food products ceased to apply.
- On 16 April, the National Company for Road Infrastructure Administration (CNAIR) extended the measures lifting the driving restrictions imposed on vehicles with a maximum authorised weight over 7.5 tonnes on the DN1 (E60) between Ploiesti and Brasov until 14 May 2020 (during the state of emergency). The driving restrictions are still in force on the DN1 between Bucharest and Ploiesti.
- Also, the driving restrictions imposed on vehicles with a maximum authorised weight over 7.5 tonnes are lifted until 14 May 2020 (during the state of emergency) on the A2 highway (Bucharest - Constanta), DN7 (Pitesti - Vestem), and DN39 (Agigea - Mangalia) on the day before the public holidays and the day of public holidays (30 April and 1 May).
- On 22 April, UNTRR confirmed that, although the Romanian Authorities have not sent the updated information to the European Commission regarding the extension of the state of emergency until 15 May 2020, it is understood that documents such as licences, transport certificates, authorisations, etc., will remain valid during the state of emergency period.

Therefore, documents issued by the Romanian Road Authority that expire during the state of emergency will remain valid until 15 May and can be renewed within 90 days of that date. Documents can be sent by post.

The validity of Romanian driving licences expiring during the state of emergency has also been extended until 15 May.

Source: UNTRR

Russia

Updated on 6/05/20

Restrictions on movements

- In its continued effort to prevent the spread of the coronavirus (COVID-19) across the territory of the Russian Federation, the Russian Government has issued the Decree of 27 March 2020 No. 763 which temporarily restricts any movements through road, rail, pedestrian, rivers and combined border-crossing points, including the overland section at the Russia-Belarus border. This decision is effective from 30 March 2020.
- The above restrictions **do not apply to truck drivers engaged in international road transport of goods** (paragraph 2). This provision is valid for citizens of the Russian Federation and for foreign truck drivers (paragraph 2 clause 2 of the Government Decree of March 16, 2020 No. 635 followed by amendments introduced by Government Decree of March 25, 2020 No. 730). It is, however, obligatory for drivers to use/wear individual protective equipment and follow personal hygiene rules.
- On 29 April, the Russian Government amended the Governmental Decree of 16 March 2020 No.635. The amendment, presented in the Governmental Decree of 29 April 2020 No.1170, **extends the closure of the Russian borders for an indefinite period, including the border with Belarus**. Therefore, borders will remain closed until the epidemiological situation returns to normal. Truck drivers remain exempt from this provision.

- Currently there's no specific restriction imposed on crews engaged in international transport operations in Russia.

Facilitation measures

- From 20 March onwards, the Russian Government has cancelled all restrictions (including customs) on the supply of basic consumer goods and a "green corridor" has been established for importers and large retail chains. A zero rate of customs duties has been levied on the import of a number of goods, including medicines and medical products.
<http://government.ru/news/39221/>
- At a meeting of the State Commission on the sustainability and development of the Russian economy, it was decided to temporarily allow the use of on-board units making payments to the Platon Electronic Toll Collection (ETC) for paying toll charges over the next 90 calendar days from the date of expiration of their service (verification) with the possibility to extend this period.
- On 26 March, Russian Government decided to withdraw the introduction of spring restrictions on regional and local roads for HGVs in 2020. Further information can be found [here](#).
- On 28 April 2020, the Russian President announced the extension of measures to ensure the sanitary and epidemiological safety of the population in connection with the spread of the coronavirus infection, and extended the 'non-working' period until 11 May.
- The movement of any person or transport in the city of Moscow or the surrounding region must obtain a special digital permit. Exemption is granted to international freight transport in the Moscow surrounding region at any time of day, and in the city of Moscow during the night (22:00-06:00). Entry into the city of Moscow during daytime hours (06:00-22:00) will only be permitted for those in the possession of a special HGV permit (regulated by Moscow Government Order of 22 August 2011 No.379-ПП).

Source: ASMAP and Russian competent authorities

Saudi Arabia

Updated on 21/04/20

- Only essential goods are allowed in transit such as food, medical and military supplies.
- Strict confinement measures are in place and there is a curfew from 15:00-06:00. This does not apply to those with special authorisation, such as drivers on duty.
- Containers are cleaned with special materials upon their arrival at Saudi Ports, as instructed by the Ports Authority.
- Citizens from the following countries are prohibited from entering from Saudi Ports (Decision of Ports Authority dated 14 March 2020): China, UAE, Kuwait, Bahrain, Egypt, Lebanon, Syria, Iraq, South Korea, Oman, Sudan, EU, Switzerland, Turkey, India, Pakistan, Eritrea, Ethiopia, Kenya, Sri Lanka, Djibouti, Somalia and Philippines.

Source: Saudi customs authorities

Serbia

Updated on 3/04/20

Restrictions on movements

- In order to limit the spread of the Coronavirus (COVID-19) into the territory of the Republic of Serbia, the Government has taken measures through different decree (unofficial translation [here](#)).
- Among the different measures, it is stated that foreign nationals shall be temporarily banned from entering the Republic of Serbia. These measures do not apply to the following categories, among others:
 - **the crew of freight motor vehicles while performing international transport by road.** In case of international transit freight transport by road, the same shall be limited to a period not longer than 12 hours from the moment of entering the territory of the Republic of Serbia.
- **Police escort for trucks in transit through Serbia has been abolished as of 2 April 2020**, which will enable faster transportation of goods to end customers.
- Trucks in transit can stop only at designated resting points and fuel stations marked with a TRANSIT sign. Drivers will receive a map of the dedicated resting points at the border crossing points. Stopping or parking out of these specific points is strictly forbidden and will be subject to sanctions. Drivers must wear protective masks and gloves.
- Please note that 45 borders are now temporarily closed (list [here](#)) and that international road freight operations should be redirected to the open borders.

Source: CCIS-AT

Slovenia

Updated on 04/05/20

Restrictions on movements

General restrictions

- Slovenian-Italian borders are closed for passenger transport by train and international occasional and regular bus services.
- Goods vehicles whose final destination is Slovenia and goods vehicles carrying postal items, medical equipment, pharmaceutical products or humanitarian aid are permitted to enter the country. At national level, the transport of goods is allowed for postal items, medical supplies and humanitarian aid.

Convoys

- Following Croatia's decision on 18 April, convoys have now also been abolished in Slovenia.

Border with Italy

- On the SLO-IT border, only the following four border crossing points are open to traffic: **Vrtojba, Fernetiči, Škoflje and Krvavi Potok**. These border crossing points are open 24 hours a day except for Krvavi Potok which is open from 05:00 until 23:00. All other border crossings are closed. Entry into the Republic of Slovenia from the Italian Republic is permitted for citizens of the Republic of Slovenia, individuals who are not Slovenian citizens or who do not have a registered permanent or temporary residence in the Republic of Slovenia if they submit proof in Slovenian, English or Italian, no older than three days, of having tested negative for SARS-CoV-2 (COVID-19). If an individual does not have such proof, he/she is allowed to enter the Republic of Slovenia only if his/her body temperature is less than 37.5°C, and if he/she shows no clear signs of upper respiratory tract infection (cough, sneezing, shortness of breath).

Border with Austria

- On the SLO-AUT border, only the following entry points are open: **Gornja Radgona** (open at all times), **Kuzma** (open at all times), **Holmec** (from 05:00 to 21:00), **Karavanke** (open at all times), **Jurij** (from 06:00 to 21:00), **Vič** (from 05:00 to 23:00), **Ljubelj** (open at all times), **Trate** (open at all times), **Radlje** (open at all times), **Gederovci** (open at all times), **Šentilj** (motorway, open at all times), **Šentilj** (highway, from 06:00 to 21:00) and **Korensko** (from 05:00 to 23:00). No passenger train traffic is allowed. Entry from Austria is permitted for Slovenian citizens, temporary or permanent residents in Slovenia, and foreigners if they present proof, not older than three days, of having tested negative for SARS-CoV-2 (COVID-19), or foreigners with a body temperature below 37.5°C with no clear signs of upper respiratory tract infection. The ordinance does not apply to those who own land on both sides of the state border who perform agricultural work, cross-border labour migrants, freight transport, passengers of emergency/ambulance vehicles, and for transit carried out in organised humanitarian convoys. Transit of persons who are assumed to be unable to leave the territory of the Republic of Slovenia due to actions of neighbouring countries shall not be allowed. The ordinance entered into force on 25 March.

Border with Croatia

- On the SLO-HR border, the following border crossing points are open for transit of vehicles from Italy: **Gruškovje, Obrezje and Starod**. Drivers must bear in mind that so far only Obrezje has been used by convoys coming from Italy.

Border with Hungary

- On the SLO-HUN border, entry into Hungary is possible at three border crossing points: **Dolga vas, Pince and Pince R1/232**. The latter is only open to Slovenian and Hungarian citizens. All vehicles entering Hungary are subject to controls, and while there is no particular restriction or control procedure on vehicles entering Slovenia, drivers should avoid contact with others and have protective equipment with them.

Facilitation measures

- As of 27 March, road freight transport is allowed during the weekend.

Extension of validity of control documents

- The Government of the Republic of Slovenia adopted a Decree on the temporary ban on performing periodic technical inspections and other procedures related to the registration of motor vehicles and work in tachograph workshops in the Republic of Slovenia, which temporarily prohibited, until 16 April 2020, the carrying out of technical inspections and other procedures. **Therefore, validity of driving licences including motor vehicle insurance and ADR certificates for transport of dangerous goods has been extended until 16 May 2020.** The Decree on temporarily prohibiting the offering and sale of goods and services directly to consumers in driving schools and authorised driver training centres in the Republic of Slovenia prohibits the training of learner drivers, additional training for learner drivers, training for safe driving,

and training for learner driver providers and safe driving training. As a result, the validity of driving licences has been extended until 16 May 2020.

- The Decree amending the Decree on temporarily prohibiting the offering and sale of goods and services directly to consumers in driving schools and authorised driver training centres in the Republic of Slovenia prohibits Initial Qualification Training, theoretical and practical tests for obtaining CPC certificates, and also the periodic training for renewal of the Union Code "95". In addition, it is prohibited to carry out all activities related to the obtaining and renewal of driving licences.
- Initial and refresher training courses for drivers transporting dangerous goods, basic and refresher professional training and tests for exceptional transport attendants, medical examinations for candidates, for the driver, and for the renewal of driving licences, control medical examinations of motor vehicle drivers, and training and tests for safe handling of tractors and tractor attachments are also prohibited. As a result, the validity of driving licences, CPC certificates and ADR driver qualification certificates which expire on 16 April 2020 has been further extended until 16 July 2020. Instructions were sent to the Slovenian Police and the Inspectorate of Infrastructure and Financial Administration to take into account the exceptional circumstances related to the validity of different documents in the transport sector, and also for foreign users.
- Slovenia has signed ADR Multilateral Agreements:
 - M324 concerning driver training certificates and safety adviser certificates; and
 - M325 concerning periodic or intermediate inspections of tanks and certificate of approval for vehicles (more details: <https://www.unece.org/trans/danger/multi/multi.html>).

Exemptions from driving and rest time rules

- Slovenia has notified the European Commission that it will apply (from 15 April to 14 May 2020, included) a temporary and limited **relaxation of the enforcement of driving and rest times** for all transport of goods. This relaxation is granted pursuant to Art. 14(2) of the EU Regulation 561/2006. It will apply to all drivers, irrespective of their nationality.
For the above-mentioned category of drivers, the following provisions will be temporarily relaxed as follows:
 - Article 6.1: replacement of the maximum daily driving limit of 9 hours with one of 11 hours.
 - Article 6.2: replacement of the maximum weekly driving limit of 56 hours with one of 60 hours.
 - Article 6.3: replacement of the maximum fortnightly driving limit of 90 hours with one of 96 hours.
 - Article 7: replacement of the minimum daily breaks requirements by imposing a break of 45 minutes after 5 and a half hours.
 - Article 8.1: reduction of the regular daily rest requirements from 11 to 9 hours.
 - Article 8.6: postponement of a weekly rest period from six to seven 24-hour period.
 - Article 8.8: possibility for the driver to take the regular weekly rest in the vehicle, as long as it has suitable sleeping facilities for each driver and the vehicle is stationary.
- A comprehensive overview of measures taken by the Government of Slovenia can be downloaded [here](#).

Sources: GIZ Intertransport, Government of Slovenia and European Commission website

Slovakia

Updated on 08/05/20

Restrictions on movements

- An emergency plan entered into force on 13 March at 07:00. This plan from the Ministry of Interior states that:
 - International buses are prohibited from entering/exiting the country.
 - Freight transport will be allowed on national and international routes. Drivers must be equipped with protective equipment and only those drivers with a temporary/permanent residence permit will be allowed to travel.
 - Secondary border crossings will be closed.

- According to the additional clarification received by IRU member in Slovakia, CESMAD Slovakia, all international drivers involved in international road freight transport are allowed to carry out their operations. In addition, CESMAD Slovakia provided further clarification on the rules applicable to truck drivers:
 - Slovakian truck drivers returning to Slovakia are only exempt from the quarantine regulations if they are performing an international transport, and provided they remain at home during the time spent in Slovakia. Any Slovakian drivers returning to Slovakia by car must quarantine for 14 days, as per the current regulations;
 - Foreign drivers performing international freight operations, to and from Slovakia, are also exempt from the quarantine regulations.

Please find [here](#) the entire text of the decision, including details regarding drivers' protection equipment and protective measures.

- The Slovak government has decided to extend controls at the borders until **27 May**. During this period it will only be possible to enter and exit Slovakia through the following border crossings:
 - **Slovakia – Austria**
 - ✓ Bratislava – Jarovce – Kittsee (motorway)
 - ✓ Bratislava – Jarovce - Kittsee (old road)
 - ✓ Bratislava – Petržalka – Berg
 - ✓ Moravský Svätý Ján - Hohenau

 - **Slovakia – Hungary**
 - ✓ Bratislava Čunovo – Rajka (motorway)
 - ✓ Medveďov – Vámosszabadi
 - ✓ Komárno – Komárom
 - ✓ Štúrovo – Esztergom
 - ✓ Šahy – Parassapuszta
 - ✓ Slovenské Ďarmoty – Balassagyarmat
 - ✓ Šiatorská Bukovinka – Salgótarján
 - ✓ Kráf – Bánréve
 - ✓ Milhošť – Tornyosnémeti (road no. I/17)
 - ✓ Milhošť – Tornyosnémeti cesta (road no. R4)
 - ✓ Slovenské Nové Mesto – Sátoraljaújhely

 - **Slovakia – Czech Republic**
 - ✓ Svrčinovec – Mosty u Jablunkova
 - ✓ Makov – Bílá-Bumbálka
 - ✓ Horné Srnie – Brumov-Bylnice
 - ✓ Drietoma – Starý Hrozenkov
 - ✓ Moravské Lieskové – Strání
 - ✓ Lysá pod Makytou – Stfelná
 - ✓ Vrbovce – Velká nad Veličkou
 - ✓ Brodské – Břeclav (highway)
 - ✓ Holíč – Hodonín

- ✓ Skalica – Sodoměřice (new road)

– **Slovakia - Poland**

- ✓ Trstená – Chyžné
- ✓ Vyšný Komárnik – Barwinek

- Procedures at green lane border crossings remain unchanged.

Facilitation measures

- On 17 April, the Slovakian government has notified the extension of driving and rest times rules relaxations. Relaxations apply **from 00:00 of 18 April until 24:00 of 31 May** and are the following:
 - Art. 6.1: increase of the maximum daily driving time from 9 hours to 11 hours
 - Art. 6.2: increase of the maximum weekly driving time from 56 hours to 60 hours
 - Art. 6.3: increase of the fortnightly driving time from 90 hours to 96 hours
 - Art. 7: the driver shall have an uninterrupted break of at least 45 minutes if he does not take a rest period after five and a half hours of driving
 - Art. 8.1: reduction of the minimum daily rest period from 11 hours to 9 hours
- No traffic bans have generally been lifted, decisions are made on a case-by-case basis.
- On 28 April, Slovak Authorities decided to lift driving bans that were originally planned for 1, 3, 8 and 10 May.

Source: CESMAD Slovakia

Spain

Updated on 07/05/20

Restrictions on movements

- On 6 May, the Spanish Government extended the state of alarm until **24 May**.
- The Spanish government announced that, as from 17 March, borders are closed for movement of persons. Are exempted Spanish citizens, Spanish residents, cross-border commuters and anyone justifying a case of Force majeure. Freight transport is exempted to guarantee economic activity and supply chain.
- The Spanish Ministry of Transport has provided instructions on the use of masks for various modes of transport, in a new Order TMA/384/2020. The instructions include the following:
 - for the transport of **passengers** by road, it is mandatory to wear a mask (both drivers and passengers);
 - for the transport of **goods** by road, it is only mandatory to wear a mask in cases of double manning in the cabin.

This new regulation takes effect on 4 May (00:00).

- In addition, the Royal decree 463/2020 published on 14 March aims at banning traffic on some national routes. *Those provisions has been not put in place, at the moment.* The following vehicles / services are exempted from the provision:
 - Roadside assistance and road maintenance vehicles
 - Vehicles distributing medical, food and fuel supplies

- Vehicles collecting solid waste
- Vehicles transporting live cattle and perishable goods (ATP)
- o Moreover, the 6-month period during which the holder of a foreign driving license (valid for driving in Spain) can drive in the national territory is suspended.
- o On 30 March, the Spanish Ministry of Transport published a list of tourist accommodation that will remain open to host, among others, drivers engaged in the transport of passengers and goods. An interactive map can be found here. The Government also released a website with information on restaurants, service stations and parking areas available for road carriers.
- o On 31 March, the Spanish Ministry of Industry, Trade and Tourism published an explanatory note on the application of Royal Decree 10/2020, which regulates paid leave for people working in non-essential sectors. The Ministry clarifies that the status of "essential" applies to types of workers and not to types of goods, so there is no list of "essential goods". The last paragraph of the explanatory note clearly states that people working in import or export activity of any kind of goods or materials are exempted from the application of the decree.
Therefore, the transport sector is considered essential regardless of the type of goods being carried.
The obligatory leave for people working for non-essential sectors has been in force until 9 April, included.

Restrictions at the borders

- o On 20 April, the Spanish Government extended control measures at borders **up until 15 May**. The measures are as follows:
 - Third country nationals are banned from entering Spain, with the exception of the following cases:
 - ✓ Residents of the European Union (EU), as well as the spouse or partner of the EU citizen and those relatives living under their care, and residents of a Schengen country or Andorra, travelling directly to their place of residence.
 - ✓ Holders of a long-term visa issued by a Member State or Schengen country, heading to that country.
 - ✓ Cross-border workers.
 - ✓ Health or elderly care professionals travelling to or from their place of work.
 - ✓ Personnel working in the field of transport of goods, within which crews of ships are included in order to ensure the provision of maritime transport services and fishing activity; and flight personnel necessary for carrying out essential commercial air transport activities.
 - ✓ Diplomatic, consular, international organisations, military personnel and members of humanitarian organisations, carrying out their professional duties.
 - ✓ People travelling for imperative family reasons, duly justified.
 - ✓ Persons for reasons of force majeure or situations of need, or whose entry is permitted for humanitarian reasons.
 - ✓ For citizens of other EU States or other countries that are part of the European Economic Area (EU + Norway, Iceland and Liechtenstein), their entry will also be denied, except in the cases above (apart from the first two points which are not applicable to them) and as long as they are not resident in Spain or are heading directly to their place of residence in another Member State, Schengen country or Andorra.
 - Land borders with Ceuta and Melilla remain closed. Land borders with Gibraltar and Andorra are open.

Facilitation measures

- Driving restrictions have also been lifted by the competent authorities.
- In all cases, the lifting does not apply to the mandatory itineraries for dangerous goods. The following restrictions are suspended for the entire duration of the state of emergency
 - Week traffic bans for vehicles over 7.5 tonnes
 - Weekend and festive bans for ADR vehicles
 - Week, festive and weekend bans for abnormal transport
 - All traffic bans for transport vehicles in Catalonia and in the Basque Country
- The following derogations apply:
 - Licenses, permits and any driving authorization expiring during the state of emergency is automatically extended until up to 70 days after its end
 - The validity of temporary authorizations for circulation are extended up until 60 days after the end of the state of emergencyMore detailed information for Spain, Catalonia, and the Basque Country.
- On 25 March, the Spanish Government published derogations to live animal transport rules:
 - Certificates, authorisations related to drivers and vehicles engaged in the transport of live animals expiring after 1/3/2020 are valid until 120 days after the end of the state of emergency or extensions thereof. In addition, this term may be extended by the Ministry of Agriculture, Fisheries and Food for a maximum of 30 more days.
 - The logbooks or route sheets will be valid despite not having been sealed by the competent authority until 7 days after the end of the state of emergency or its extensions, and may be extended 7 more days by the General Directorate of Agricultural Productions and Markets.
 - Exemptions granted on the rest times related to the protection of animals during transport and related operations. This applies to all animal movements that are carried out during the state of emergency. The total duration of the trip will be the maximum allowed for each species in Chapter V of Annex I of Regulation (EC) No. 1/2005, of the Council, of 22 December 2004, except for rest time.
 - These measures apply to the entire territory of Spain. The Government will notify the EC, aiming to extend the validity of such measures to other countries.
- On 14 April, the Spanish government advised of the relaxation of driving and rest times rules. These relaxations apply from 14 April until 31 May and are as follows:
 - Art. 6.1: increase in the maximum daily driving limit from 9 hours to 11 hours
 - Art. 8.2: reduction in the daily rest requirements from 11 to 9 hours
 - Art. 8.6: possibility of taking two consecutive reduced weekly rests of at least 24 hours, provided that:
 - a) The driver takes at least 4 weekly rest periods in those 4 consecutive weeks, at least two of which must be the normal weekly rest periods of at least 45 hours
 - b) no compensation is required for reduced weekly rest
 - Art. 8.8: Possibility for the driver to take the regular weekly rest in the vehicle, as long as it has suitable sleeping facilities for each driver, and the vehicle is stationary.

Members should bear in mind that maximum driving limits of 56 hours (Art. 6.2) and 90 hours (art. 6.3) are maintained.

Sources: ASTIC, CETM, and Confibus

Sweden

Updated on 14/04/20

Restrictions on movements

- The Sweden government has taken measures introducing social distancing to prevent the spread of the Coronavirus (COVID-19). Freight transport activities within, to and from Sweden are not impacted by these measures.

Facilitation measures

- The Swedish Transport Agency states that Sweden plans to adopt a temporary and limited relaxation on the enforcement of driving and rest times for the **drivers of vehicles transporting all types of goods and transport of passengers.**
- This temporary relaxation applies from **15 April 2020 and will run until 31 May 2020.** This relaxation is granted pursuant to Article 14(2) of the EU Regulation 561/2006. It will apply to all drivers, irrespective of their nationality, when operating on the Swedish territory.
- For the above-mentioned category of drivers, the following provisions will be temporarily relaxed as follows:
 - Article 6.1: replacement of the maximum daily driving limit of 9 hours with one of 11 hours.
 - Article 6.2: replacement of the maximum weekly driving limit of 56 hours with one of 60 hours.
 - Article 6.3: replacement of the maximum fortnightly driving limit of 90 hours with one of 120 hours.
 - No derogation to Article 7 of Regulation 561/2006.
 - Article 8.1: reduction of the regular daily rest requirements from 11 to 9 hours.
 - Article 8.6: reduction of the regular weekly rest period from 45 hours to 24 hours.
 - Article 8.8: possibility for the driver to take the regular weekly rest shorter than 45 hours in the vehicle, as long as it has suitable sleeping facilities for each driver and the vehicle is stationary.

Sources: SA and Stoneridge Electronics

Switzerland

Updated on 04/05/20

Restrictions on movements

- On 27 April 2020, Switzerland started a de-confinement plan in several phases. No decision has been taken to re-open the borders, not all border crossings are open.
- Indeed, from 00:00 of 17 March, entry by road on the Swiss territory from Italy, France, Germany, and Austria is limited to Swiss citizens, Swiss residents and people entering for professional reasons. Only major border crossings are open for movements of persons.
- International freight transport is not affected by these measures, and all border crossing points are open for freight movements. Green lanes are also in place at some border crossings for import, export and transit of medical products, foodstuff, fuel supplies, and post. List of border crossings equipped with green lanes for freight transport is available here.

- On 1 April, the Swiss Federal Department of Justice notified the **extension of border controls until further notice (as long as necessary, but for a maximum of 6 months)**. The prolongation involves all countries except the Principality of Liechtenstein.
At present, there is no official date for the lifting of border controls.
- No Schengen visa will be issued to third country nationals until 15 June 2020.

Source: ASTAG, Federal Customs Administration, Swiss Federal Department of Justice and European Commission

Tajikistan

Updated on 6/04/20

- Government of Tajikistan has issued a temporary regulation concerning international freight transport in the Republic of Tajikistan in view of COVID-19 prevention (unofficial translation from ABBAT [here](#)).
- This temporary regulation specifies the entry, exit and transit of international freight vehicles and the movement of drivers engaged in international road transport to/from the Republic of Tajikistan.
- The regulation was approved by the Ministry of Transport, Health and Social Affairs, Internal Affairs, Customs and the State Committee for National Security of the Republic of Tajikistan.
<http://www.abbat.tj/news/972>

Source: ABBAT

Tunisia

Updated on 7/04/20

- There are no restrictions on movement of goods in Tunisia; however, importers are facing difficulties importing goods, not because of internal regulations but rather due to the situation worldwide.
- Exporting medical supplies that are necessary for treatment of the virus, such as masks and oxygen machines require special authorization.
- Work at the borders is maintained with staff reduction to ensure social distancing whilst on duty. Staff are split into 2 shifts that alternate every week.
- Borders with Libya are already closed due to the political situation, therefore there is not very much transit movement in general, not because of the coronavirus, but because of the political situation in the region.
- Borders with Algeria are closed both way.

Source: Tunisian customs authorities

Turkey

Updated on 09/05/20

Restrictions on movements

- On 8 May, the Turkish Ministry of Interior updated the measures related to drivers entering Turkey (unofficial translation here). According to the measures, all drivers will be subject to health checks. Individuals who show symptoms related to the disease will not be allowed to enter Turkey. According to the updated measures:
 - All drivers will be subject to health checks. Foreign drivers who show symptoms related to COVID-19 will not be allowed to enter Turkey. Turkish drivers who show symptoms related to COVID-19 will be put in quarantine.
 - The previous obligation for foreign drivers who do not show symptoms of COVID-19 to leave Turkey within 72 hours of entering has been lifted. However, foreign drivers will be obligated to agree with a letter of commitment that they will exit Turkey as soon as possible. In this case only they will not be subject to a 14-day quarantine period.
 - Turkish drivers who do not show symptoms of COVID-19 will be allowed to leave Turkey without any quarantine procedures.
 - Trucks which are carrying goods such as medicine, medical supplies and food supplies that are urgent for Turkey, will be given priority to enter Turkey.
 - Foreign drivers should go to the nearest healthcare institution if they feel any signs and symptoms of COVID-19 (fever, cough, shortness of breath, etc.).
 - Ro-Ro vessels will only carry trailers (without truck) or containers; drivers will not be allowed to board Ro-Ro vessels, unless operating between the following ports:
 - Turkey-Ukraine:
Zonguldak – Chornomorsk (Ilyichevsky)
Istanbul (Haydarpaşa) - Chornomorsk (Ilyichevsky)
Karasu – Chornomorsk (Ilyichevsky)
 - Turkey-Romania:
Constanta - Karasu
 - Turkey-Lebanon:
Taşucu - Tripoli
 - Turkey-Israel:
Mersin – Haifa
 - All of above mentioned measures are not valid for entry/exit to and from Iran and Iraq. Foreign trucks and drivers in Turkey will be allowed to leave Turkey and reach those countries by using open border crossing points. However, they will not be allowed to return to Turkey after they have left.

Sources: UND and TOBB

Turkmenistan

Updated on 14/04/20

- According to a new measure, as of 17 March, people entering Turkmenistan via Uzbekistan, must present a health report. Entry into the territory will not be allowed without this health report. More information [here](#).
- With effect from 24 March 2020, the transportation of goods arriving in Turkmenistan by road through the checkpoints "Garabogaz" and "Farap" on the state border of Turkmenistan, followed by transportation inside Turkmenistan, will be carried out by Turkmen carriers. The goods can be transferred from the foreign freight carrier to a Turkmen freight carrier in specially designated areas on the state border, provided that they are transferred without contact.
- Foreign trucks which arrived in Turkmenbashi International Seaport prior to, or on 23 March (inclusive) can leave trailers or semi-trailers in the designated areas on the territory of the Turkmenbashi International Seaport for subsequent transportation to Turkmenistan, or for transit through its territory by Turkmen trucking companies. Subsequently, foreign tractors must return, with the driver, by sea. Full rules and procedures on cargo delivery concerning Turkmenbashi seaport can be consulted [here](#).
- However, with effect from 24 March 2020, all cargo arriving at the Turkmenbashi International Sea Port, including cargo in transit, can only be sent by sea vessel, on trailers or semi-trailers without tractors, drivers or persons accompanying the goods.
- At the same time, for the efficient functioning of transport and transit corridors passing through the territory of Turkmenistan, the Turkmen authorities propose to actively use combined modes of transport (both sea and land) for the transportation of goods in containers and railway wagons.
- For any issues relating to the transportation of goods in Turkmenistan and transit through its territory, the Turkmen authorities have set up hotlines:
 - Ashgabat - +99365647471;
 - Baku - +994502900301;
 - Tashkent - +998712023210 / 998901297455.
- Taking into account the introduction of additional measures in Turkmenistan to combat the spread of the coronavirus (COVID-19) pandemic, it is recommended that carriers, as well as organisations planning to deliver goods to Turkmenistan, minimise the volume of road freight transport in the region by using combined modes of transport.
Please consider this information when planning transportation.
- On 14 April, The Permanent Mission of Turkmenistan to the United Nations Office in Geneva has informed IRU of the [following procedures](#) affecting freight transport in Turkmenistan, and has requested that IRU communicate this to all interested parties. Please consider this information when planning transport in Turkmenistan.

Sources: THADA, Permanent Mission of Turkmenistan to the United Nations Office, and Turkish Embassy – Ashgabat / Turkmenistan

Ukraine

Updated on 7/05/20

Restrictions at borders

- The National Security and Defense Council of Ukraine, Oleksiy Danilov, announced on 13 March that the country will close its borders for foreigners (effective 15 March) for 14 days, with prolongation if necessary. By now, the restrictions have been officially **prolonged until 11 May**. Border crossing points will remain open for freight transport (including transit). Temperature of drivers will be checked and they will be asked to wear masks, medical gloves, and have antiseptic gel for hands sanitation. The list of Ukrainian border crossing points closed or restricted for movements can be found on the annexes to the governmental decree.
- Given the fact that Ukraine and neighbouring countries have imposed restrictions on crossing the state borders, the State Border Service of Ukraine has released a list of checkpoints that operate between Ukraine and neighbouring countries.
- In addition, to prevent the spread of COVID-19, Ukraine and most of the neighbouring countries have restricted entry of foreigners to their territory.
- As of 7 April, the following 19 border-crossing points are operational at the Ukrainian border:
 - **Crossing points at the border with Belarus:**
 - ✓ Senkivka - Veselivka
 - ✓ Novi Yarylovychi - Nova Huta
 - ✓ Slavutych - Komaryn
 - ✓ Vystupovychi - Nova Rudnia
 - ✓ Domanove - Mokransky
 - **At the border with Poland:**
 - ✓ Krakowiec - Korchowa
 - ✓ Yagodin - Dorohusk
 - ✓ Rawa Ruska - Hrebenne
 - **At the border with Slovakia:**
 - ✓ Uzhhorod-Vyshnie - Niemetske
 - **At the border with Hungary:**
 - ✓ Chop (Tysa) - Zakhon
 - **At the border with Romania:**
 - ✓ Diakove - Khalmeu
 - ✓ Porubne - Siret
 - **At the border with Moldova:**
 - ✓ Palanka-Maiaky - Udobne
 - ✓ Starokozache - Tudora
 - ✓ Reni - Dzhiurdzhiulesht
 - ✓ Mohyliv-Podilskyi - Otach
 - **At the border with Russia:**
 - ✓ Hoptivka - Nekhotieievka
 - ✓ Iunakivka - Sudzha
 - ✓ Bachivsk - Troieborna
 - ✓ Senkivka - Novi Yurkovychi
- On 15 April 2020, the Ukrainian Government approved a mechanism allowing, on the basis of reciprocity, to take restrictive measures against those countries that have set restrictions towards Ukraine. On the basis of reciprocity, appropriate measures can be applied to drivers and the crew of goods vehicles from countries which imposed border crossing restrictions to Ukrainian goods vehicles

drivers and crew. Meanwhile, crossing the state border of Ukraine is permitted for drivers and the crew of goods vehicles from countries which didn't impose any restrictions on Ukrainian goods vehicles drivers and the crew.

Sources: AsMAP-Ukraine, State Frontier Service of Ukraine - <https://dpsu.gov.ua/ua/news/Uryad-posiliv-obmezhenya-na-kordoni/?fbclid=IwAR3SYmtoLhYG0ZSajD3I2Dawrzbc0--6eXC7tlZyTcdtURaY4ONBSzZR9M>, IRU Moscow office

United Kingdom

Updated on 22/04/20

Restrictions on movements

- On March 17th, the government has taken new measures, which include advising British nationals against all non-essential international travel.
- The advice against non-essential travel is not intended to apply to international and domestic freight transport. Thus, haulage continues under no extra restrictions in the UK officially.
- A first guidance note on Coronavirus (Covid-19) and freight transport has been published by the UK Department for Transport, followed by a second guidance note on Covid-19 for the transport sector.
- In cases of non-resident drivers becoming unwell with the coronavirus (Covid-19) symptoms while in the UK, the national authorities recommend the following:
 - If emergency/clinical care is needed, an ambulance should be called;
 - The official guidelines must be followed, ie. immediate self-isolation; it is the responsibility of the freight company to safeguard employee well-being and therefore place them in suitable individual accommodation;
 - Foreign nationals can also approach their embassy for assistance;
 - In exceptional circumstances, depending on capacity, it may be possible to arrange accommodation at the London Isolation Centre.

Facilitation measures

Relaxation of EU drivers' hours rules:

- In response to unprecedented pressures on local and national supply chains, the Department for Transport has pursuant to Article 14(2) of Regulation (EC) No 561/2006, introduced a temporary and limited urgent relaxation of the enforcement of EU drivers' hours rules in England, Scotland and Wales. It has also introduced a temporary and limited urgent relaxation of the enforcement of GB drivers' hours rules in England, Scotland and Wales.
- This relaxation began on 23 March and was due to end on 21 April 2020. A specific review of the continuation of the relaxations past 21 April has been conducted and, on the basis of the current evidence, a decision has been made to continue with the relaxations, (apart from the relaxation on break requirements) until **23:59 on Sunday 31 May 2020**. This relaxation applies to those undertaking carriage of goods by road in all sectors.
- The EU drivers' hours rules can be temporarily relaxed as follows:
 - Replacement of the EU daily driving limit of 9 hours with one of 11 hours

COVID-19 Outbreak Road Transport

iru.org/covid19



- Reduction of the daily rest requirements from 11 to 9 hours
 - Lifting the weekly (56 hours) and fortnightly driving limits (90 hours) to 60 and 96 hours respectively
 - Postponement of the requirement to start a weekly rest period after six 24 hours periods, for after seven 24 hours period; although 2 regular weekly rest periods or a regular and a reduced weekly rest period will still be required within a fortnight
 - Drivers using the relaxation at 'b', reducing their daily rest from 11 hours to 9, can still use the derogation allowing them to interrupt their daily rest, by up to one hour, to embark and disembark from a train or a ferry.
- o Drivers must not use relaxation 'a' and 'd' at the same time. This is to ensure drivers can get adequate rest. Relaxations in force before 21 April are no longer applicable.

Relaxation of GB drivers' hours rules:

- o The GB drivers' hours rules can be temporarily relaxed as follows:
 - Replacement of the GB duty time limit of 11 hours with 12 hours
 - Replacement of the GB daily driving time limit of 10 hours with 11 hours.
- o Drivers can only take advantage of this temporary relaxation 5 days in any 7-day period and must take a rest period of 24 hours within the same 7 day period when taking advantage of this relaxation. More information [here](#).
- o In addition to these measures, from Monday 23 March, all road user charging schemes in the capital will be temporarily suspended until further notice. This includes the Congestion Charge, the central London ULEZ and the London-wide LEZ.

Relaxation of NI drivers' hours rules:

- o In response to unprecedented pressures on local and national supply chains, the Department for Infrastructure has introduced a temporary and limited urgent relaxation of the enforcement of EU drivers' hours rules in Northern Ireland. It has also introduced a temporary and limited urgent relaxation of the enforcement of NI drivers' hours rules in Northern Ireland.

This relaxation began on 23 March 2020 and was due to end on 21 April 2020. A specific review of the continuation of the relaxations past 21 April 2020 has been conducted and on the basis of the current evidence, a decision has been made to continue with the relaxations (apart from the relaxation on break requirements) until 23:59 on Sunday 31 May 2020.

The Department will keep these temporary arrangements under review and the relaxation may be amended or brought to an end earlier if circumstances change.

The Department would like to remind all transport operators and the customers who influence their practices that:

- The standard drivers' hours rules are important safety-related rules. They are in place to improve road safety and the working conditions of drivers, and reduce the risk of drivers being involved in fatigue-related accidents.
- Therefore, these temporary relaxations should only be used where absolutely necessary. Operators should, wherever possible, attempt to recruit additional drivers from other sectors who are out of work or facing being furloughed.
- The temporary relaxations are designed to support the transport of vital goods, including the supply chains related to medicines, health, fuel, food and other necessities.

Contact us:
Information@iru.org

The current situation is being kept under review and the relaxation may be amended or withdrawn earlier than 31 May 2020 if circumstances change. Operators should use this period to increase resilience.

If any drivers or operators consider that they are being asked to use the relaxation without correct justification then they can email their concerns to drivershours@infrastructure-ni.gov.uk.

Retrospective checking of the use of these relaxations will take place as necessary, including by the Driver and Vehicle Agency (DVA).

Please note that the previous relaxation of the EU drivers' hours rules on breaks (i.e. the requirements for daily breaks of 45 minutes after 4.5 hours driving replaced with a break of 45 minutes after 5.5 hours of driving) was applicable from 23 March 2020 until 21 April 2020 only.

Those wishing to use this relaxation should read the full notice [here](#) and must follow its requirements.

Sources: RHA and FTA

USA

Updated on 23/03/20

Updated situation on Cross-Border Operations in North America (Canada, Mexico and USA)

- IRU's US freight member, ATA, has reported the following:
 - With effect from midnight, Friday 20 March, the US-Canada and US-Mexico border ports of entry have implemented a partial travel ban. This ban does not apply to trade or truck freight of any kind, nor to truck drivers from these three countries (providing the driver is in good health). Please see the highlights below, as well as the attached Federal Register notices.
[US-Canada Joint Initiative COVID-19 Statement](#)
[US-Mexico Joint Initiative COVID-19 Statement](#)
- There have been reports of some Customs and Border Protection officers on the northern border informing drivers that, with effect from 23 March, their loads will not be considered "essential". There are also reports that some loads have already been turned away for the same reason. ATA has been informed that ALL truck freight is essential, and if drivers are told otherwise then he or she must request the assistance of a supervisor. Furthermore, drivers commuting to work across the border, or persons crossing the border on foot to collect a load, are also permitted to cross.
If you receive reports from your drivers of any issues, please inform ATA immediately to inform the CBP. Field officers should be fully aware that all freight and all truck drivers are considered essential at this point.

Updated situation on Domestic Freight Operations in the United States of America

- On 18 March, the FMCSA released an updated Emergency Declaration for commercial motor vehicle operations providing direct assistance to COVID-19 relief efforts. The declaration can be located on the FMCSA's website [here](#).
In the update, the FMCSA provided new guidance on which operations are covered by the declaration, clarifying that fuel haulers are in fact included. The updated declaration also provides new guidance on "mixed load" operations.

COVID-19 Outbreak Road Transport

iru.org/covid19



"We thank Administrator Mullen and the Trump Administration for continued support to our industry as we deliver food, water, medicine, medical supplies, fuel and other essentials throughout this public health crisis," said Dan Horvath, Vice President of Safety Policy at the American Trucking Associations. "The men and women of the trucking industry are heroes who remain on the front lines in this national effort."

- ATA encourages individuals to review the official declaration to determine whether their operations are included

Source: ATA

Uzbekistan

Updated on 06/05/20

Restrictions on movements

- Starting from 16 March, Uzbekistan is suspending all air and road connections with third countries. Railway connections are closed.
- According to the State Customs Committee of Uzbekistan, restrictions shall not apply to persons and vehicles engaged in goods transport by road, rail, sea, river, and air.
- As of 1 May, new temporary rules are applicable in Uzbekistan for international road transport in the territory of the Republic of Uzbekistan. This new procedure applies to both national and foreign drivers engaged in international road transport.
The movement of trucks can be carried out through specially designated state border checkpoints, until further notice. This was stated in the decision of the Republican Special Commission on the preparation of a program of measures to prevent the entry and spread of coronavirus (Covid-19) in the Republic of Uzbekistan. According to this decision, the movement of trucks will be carried out only through the following state border checkpoints:
 - with the Islamic Republic of Afghanistan - "Termez";
 - with the Republic of Turkmenistan - "Olot";
 - With the Republic of Tajikistan - "Sarosiyo", "Oybek" and "Plotina";
 - With the Kyrgyz Republic - "Do'stlik", "O'zbekiston", "Vodil", "Chashma" and "Oq qiya";
 - With the Republic of Kazakhstan - "Daut-ata", "Gulistan", "Yallama", "Zangiota" and "Toshkent".
- With effect from 30 April, all trucks arriving in Uzbekistan will be directed to special parking areas close to the border crossing points, where the drivers will be tested for coronavirus (Covid-19). The vehicles and their drivers will remain in those special parking areas until the test results are announced. If the coronavirus (Covid-19) test is negative, the journey according to the confirmed route will be authorised to continue. Drivers must wear protective suits, disposable masks and gloves. In the case of a positive test result, the driver will be taken to a medical facility in accordance with regulations, and the co-driver, if present, will be transferred to a quarantine facility.
After the complete disinfection of the motor vehicle, the transport operation may continue with another driver (who has no connection with the consignor or consignee of the transport operation concerned), or the goods carried may be transferred to another motor vehicle under customs control.
In the case of a new driver, the obligations connected with the delivery of goods under customs control remain applicable to this driver.
Foreign drivers entering Uzbekistan to deliver goods must leave the territory within 10 days of the delivery of goods. If they must collect goods for the return leg during this time, they are obligated to

Contact us:
information@iru.org



COVID-19 Outbreak Road Transport

iru.org/covid19

RU

wait in the designated parking area closest to the place of delivery. These areas have strict quarantine and social distancing rules; drivers cannot talk to other people nor leave the area. Unauthorised people cannot enter the area.

The control over the movement of foreign motor vehicles crossing the Uzbek customs border is carried out on the basis of the "Obligation to return vehicles".

Drivers should be aware that the following situations are considered a violation of the quarantine rules:

- Deviation from the planned route;
- Failure to wear the protective suits, masks or gloves;
- Failure to comply with the time set for repatriation;
- Lack of necessary transport documents (driving license, clearance documents, certificates, international transport permits)

If a driver fails to comply with the delivery time set by the customs authority, and proof is provided (by way of entries in his/her paperwork) that the non-compliance to these delivery times is due to the driver's compliance with the present temporary regulation, then no administrative proceeding will be initiated.

**Sources: Ministry of Transport of Uzbekistan, <https://www.gazeta.uz/ru/2020/03/15/measures>,
Uzbekistan Embassy in Germany**

Contact us:
information@iru.org